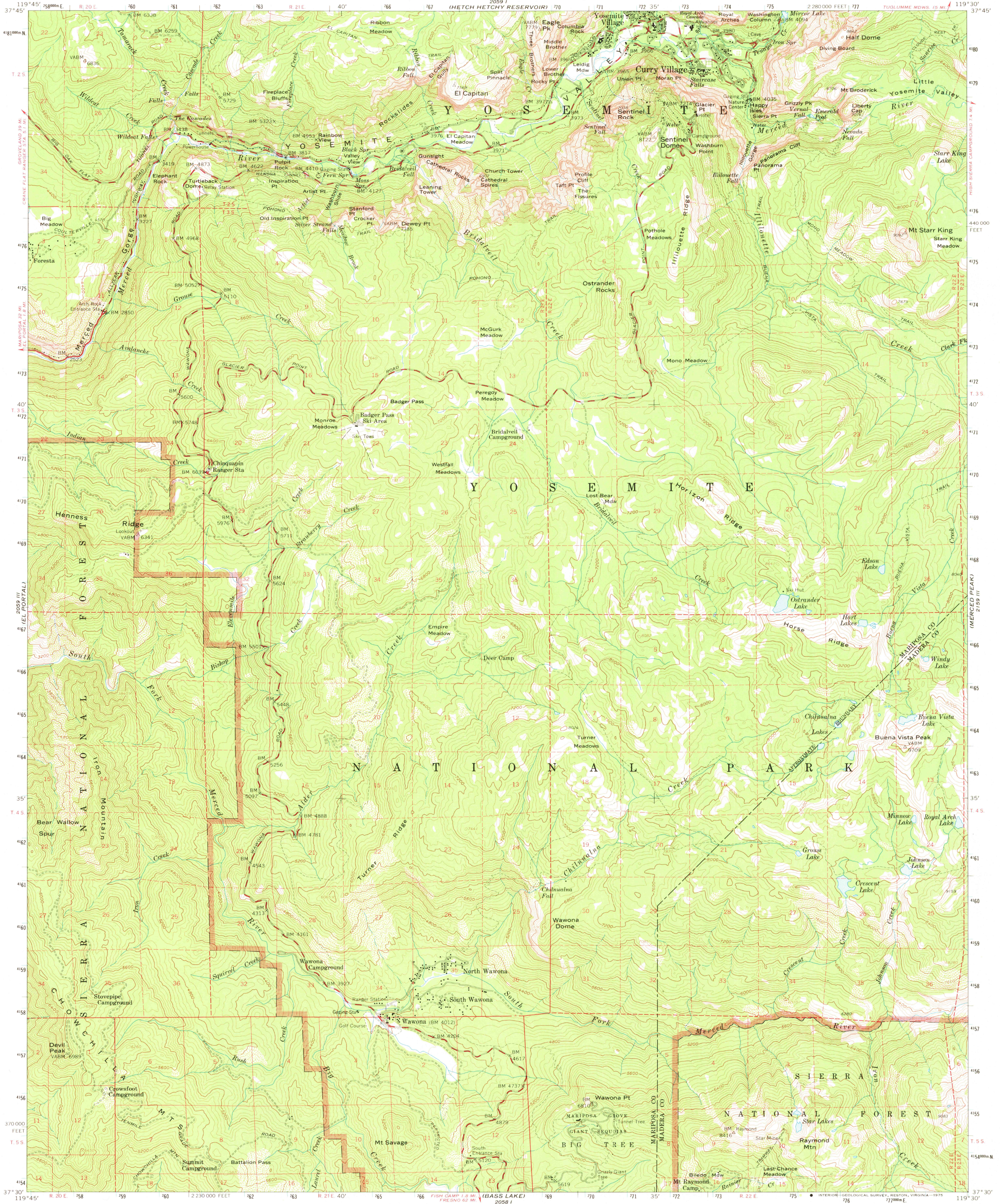


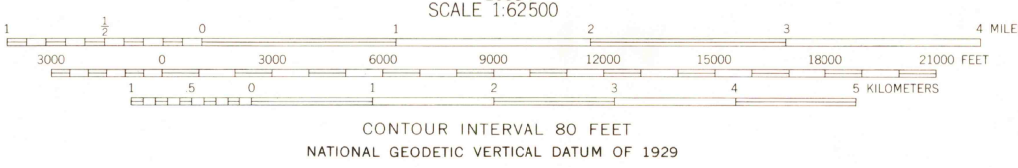
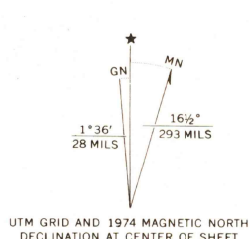
UNITED STATES  
DEPARTMENT OF THE INTERIOR  
GEOLOGICAL SURVEY

STATE OF CALIFORNIA  
DEPARTMENT OF WATER RESOURCES

YOSEMITE QUADRANGLE  
CALIFORNIA  
15 MINUTE SERIES (TOPOGRAPHIC)



Mapped, edited, and published by the Geological Survey  
Control by USGS and USC&GS  
Topography from aerial photographs by photogrammetric methods  
Aerial photographs taken 1955. Advance field check 1956  
Polyconic projection. 1927 North American datum  
10,000-foot grid based on California coordinate system, zone 3  
1000-meter Universal Transverse Mercator grid ticks,  
zone 11, shown in blue  
Dashed land lines indicate approximate locations  
Land lines unsurveyed in T. 2 S.-R. 22 E., T. 3 S.-R. 23 E.,  
and parts of T. 2 S.-R. 21 E., T. 3 S.-R. 20 E., and T. 5 S.-R. 22 E.  
Land lines omitted in T. 2 S.-R. 23 E., T. 4 S.-R. 23 E.,  
and parts of T. 3 S.-R. 22 E., and T. 4 S.-R. 20 E., because of  
insufficient data



ROAD CLASSIFICATION  
Heavy-duty ——— Light-duty ———  
Medium-duty ——— Unimproved dirt ———  
Portion of this area also covered by 1:24,000-scale  
map of Yosemite Valley, surveyed 1958  
YOSEMITE, CALIF.  
N 3730-W 11930/15  
MINOR CORRECTIONS MADE 1974  
1956  
AMS 2059 II-SERIES VT95



THIS MAP COMPLIES WITH NATIONAL MAP ACCURACY STANDARDS  
FOR SALE BY U.S. GEOLOGICAL SURVEY, DENVER, COLORADO 80225, OR RESTON, VIRGINIA 22092  
A FOLDER DESCRIBING TOPOGRAPHIC MAPS AND SYMBOLS IS AVAILABLE ON REQUEST

USGS  
Historical File  
Topographic Division

FEB 10