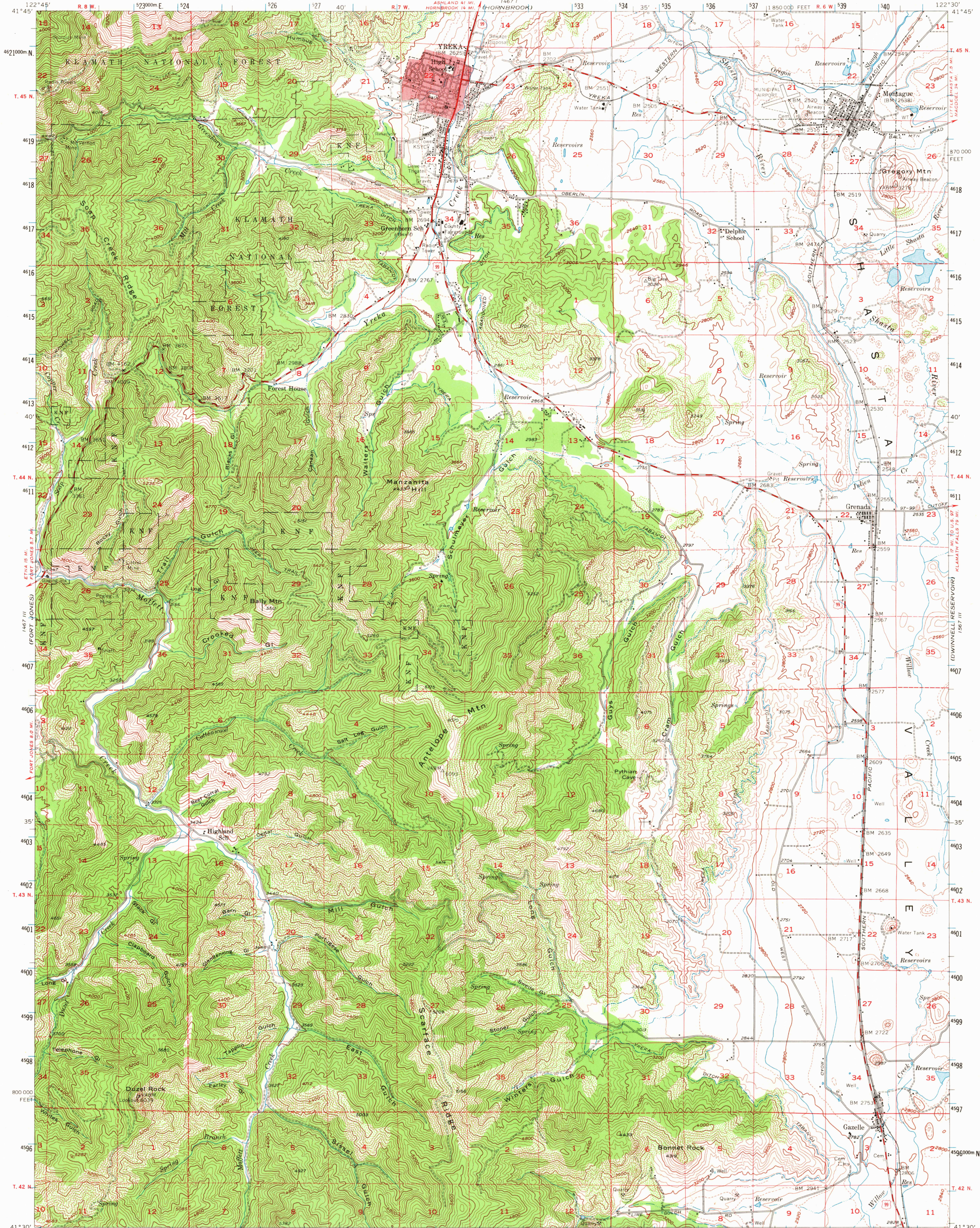


UNITED STATES  
DEPARTMENT OF THE INTERIOR  
GEOLOGICAL SURVEY

YREKA QUADRANGLE  
CALIFORNIA—SISKIYOU CO.  
15 MINUTE SERIES (TOPOGRAPHIC)



Mapped, edited, and published by the Geological Survey

Control by USGS and USC&GS

Topography by planimeter methods 1922 and 1932

and by multiplex methods from aerial photographs

taken 1951. Field check 1954

Polyconic projection. 1927 North American datum

10,000-foot grid based on California coordinate system, zone 1

Red tint indicates areas in which only

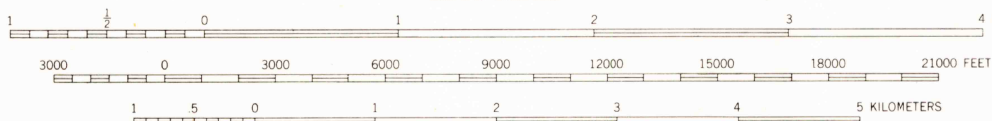
landmark buildings are shown

Dashed land lines indicate approximate locations

Unchecked elevations are shown in brown

1000-meter Universal Transverse Mercator grid ticks,

zone 10, shown in blue



CONTOUR INTERVAL 80 FEET

DASHED LINES REPRESENT 40-FOOT CONTOURS

DATUM IS MEAN SEA LEVEL

THIS MAP COMPLIES WITH NATIONAL MAP ACCURACY STANDARDS

FOR SALE BY U. S. GEOLOGICAL SURVEY, DENVER, COLORADO 80225 OR WASHINGTON, D. C. 20242

A FOLDER DESCRIBING TOPOGRAPHIC MAPS AND SYMBOLS IS AVAILABLE ON REQUEST



USGS  
HISTORICAL FILE  
TOPOGRAPHIC DIVISION

YREKA, CALIF.  
N4130—W12230/15

1954

AMS 1467 II—SERIES V795

6520  
OCT 13 1971