

U. S. GEOLOGICAL SURVEY,
TOPOGRAPHIC FILES.

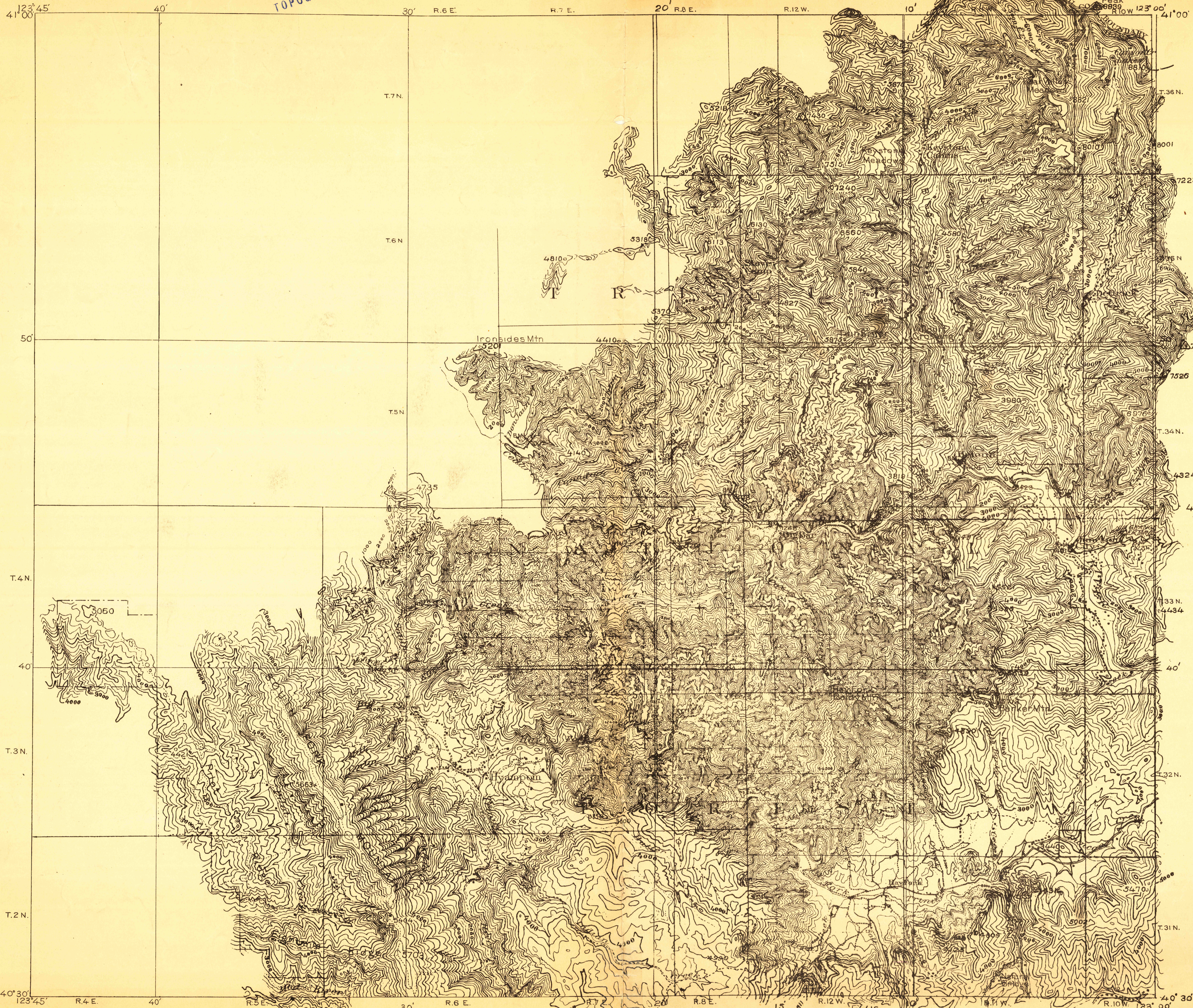
U. S. GEOLOGICAL SURVEY
GEORGE OTIS SMITH, DIRECTOR

TOPOGRAPHY

Advance sheet.
Subject to correction.

RETAINED COPY
This sheet must not be taken
from the files without an order
from the Chief Geographer.

CALIFORNIA
BIG BAR QUADRANGLE

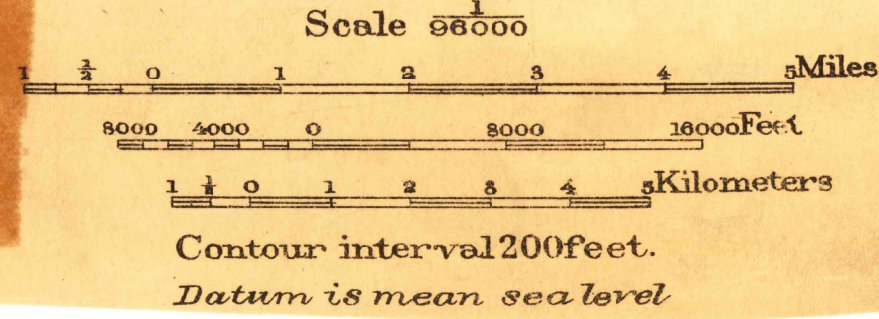


U. S. G. S.
FILE COPY
Inspection and Editing

USGS Library
Reston, VA.
Topo Archive

U. S. G. S.
FILE COPY
Inspection and Editing

R. B. Marshall, Chief Geographer.
T. G. Gerdine, Geographer in charge.
Topography by J. P. Harrison
Control by C. F. Uruhart, L. F. Biggs and G. C. Jackson.
Surveyed in 1908-9



Shaded area is in
100 foot Contours

Big Bar, Calif.
BIG BAR