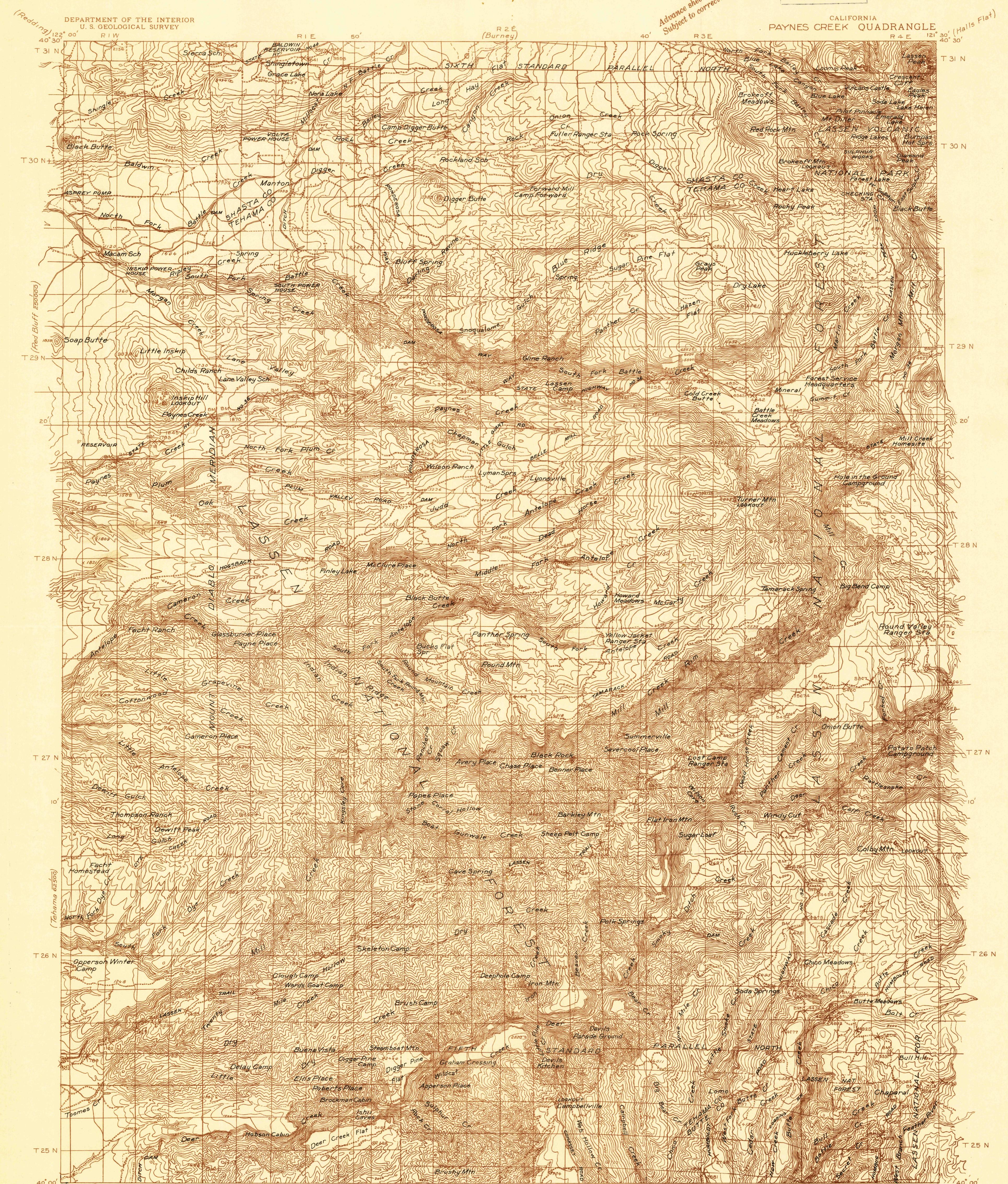


Advance sheet.  
Subject to correction.

DEPARTMENT OF THE INTERIOR  
U. S. GEOLOGICAL SURVEY

CALIFORNIA  
PAYNES CREEK QUADRANGLE

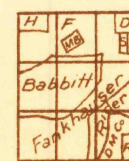


H. H. Hodgeson, Division Engineer  
Topography by E.P. Davis, A. Fankhauser, R.G. Stevenson,  
Fred Rider, B.T. Babbitt, Jr., J.J. Hayes, Max Bookman,  
U. S. Forest Service and Diamond Match Company  
Control by U. S. Geological Survey and U. S. Coast and Geodetic Survey  
Surveyed in 1934-1935

19°  
TRUE NORTH  
MAGNETIC NORTH  
APPROXIMATE MEAN  
DECLINATION, 1935

(Chico)  
R 2 E  
Scale 96000

1 2 3 4 5 6 7 8 Miles  
8000 4000 0 8000 16000 24000 32000 Feet  
1 2 3 4 5 6 7 8 9 10 Kilometers  
Contour interval 100 feet  
Datum is mean sea level



Polyconic projection. 1927 North American datum  
USGS  
Historical File  
Topographic Division

PAYNES CREEK, CALIF.

PUB. NAME CHANGED TO MINERAL (1:125000)

U.S.G.S.  
FILE COPY  
TOPOGRAPHIC DIVISION