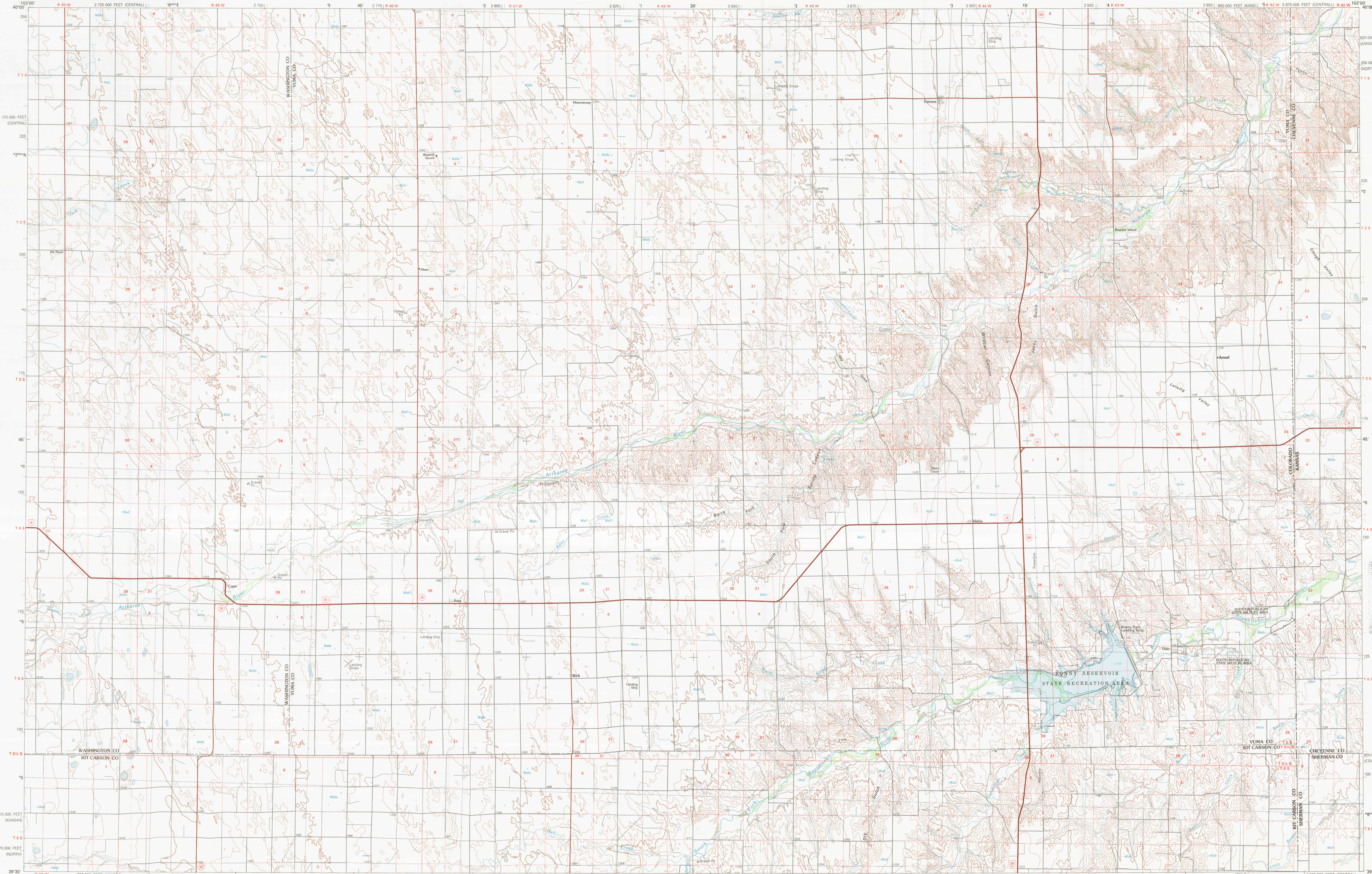


BONNY RESERVOIR, COLORADO-KANSAS

30X60 MINUTE SERIES (TOPOGRAPHIC)



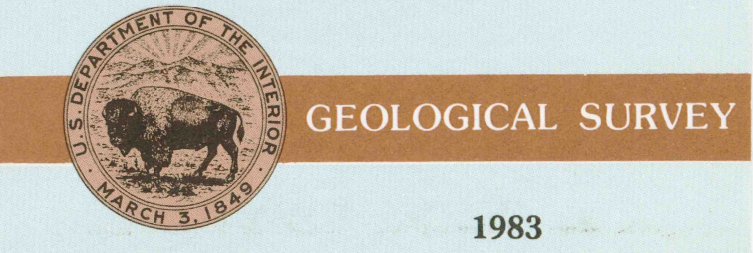
Bonny Reservoir
COLORADO-KANSAS

1:100 000-scale metric
topographic map



30 X 60 MINUTE QUADRANGLE
SHOWING

- Contours and elevations in meters
- Highways, roads and other manmade structures
- Water features
- Woodland areas
- Geographic names



Produced by the United States Geological Survey
Compiled from USGS 1:24 000-scale topographic maps dated 1963-1978. Partially revised from aerial photographs taken 1975 and other source data. Revised information not field checked. Map edited 1983.
Projection and 10 000-meter grid, zone 13 Universal Transverse Mercator.
25 000-foot grid ticks based on Colorado coordinate system, north and central zones and Kansas coordinate system, north zone, 1927 North American Datum.
To place on the predicted North American Datum 1983 move the projection lines 4 meters north and 41 meters east. There may be private inholdings within the boundaries of the National or State reservations shown on this map.
R 42 W is duplicated in Colorado and Kansas.
CONTOUR INTERVAL: 10 METERS
NATIONAL GEODETIC VERTICAL DATUM OF 1929

THIS MAP COMPLIES WITH NATIONAL MAP ACCURACY STANDARDS

Meters	Feet
1	3.2808
2	6.5617
3	9.8425
4	13.1234
5	16.4042
6	19.6850
7	22.9659
8	26.2467
9	29.5276
10	32.8084

To convert meters to feet multiply by 3.2808
To convert feet to meters multiply by 0.3048

FOR SALE BY U.S. GEOLOGICAL SURVEY, DENVER, COLORADO 80225 OR RESTON, VIRGINIA 20192

Topographic Map Symbols

- Primary highway, hard surface
- Secondary highway, hard surface
- Light duty road, principal street, hard or improved surface
- Other road or street; soil
- Route marker: Interstate, U. S., State
- Railroad: standard gage; narrow gage
- Bridge; overpass; underpass
- Tunnel: road, railroad
- Built up area, locality, elevation
- Airport; landing field; landing strip
- National boundary
- State boundary
- County boundary
- National or State reservation boundary
- Land grant boundary
- U. S. public lands survey: range, township, section
- Range, township; section line, protracted
- Power transmission line; pipeline
- Dam; dam with lock
- Cemetery; building
- Windmill; water well; spring
- Mine shaft; pit or quarry; mine; quarry; gravel pit
- Campground; picnic area; U. S. location monument
- Ruins; cliff dwelling
- Distorted surface: strip mine, lava, sand
- Contours: index; intermediate; supplementary
- Bathymetric contours: index; intermediate
- Stream; lake; perennial; intermittent
- Rapids, large and small; falls, large and small
- Area to be submerged; marsh; swamp
- Land subject to controlled inundation; woodland
- Scrub; mangrove
- Orchard; vineyard

SCALE 1:100 000
1 CENTIMETER ON THE MAP REPRESENTS 1 KILOMETER ON THE GROUND
CONTOUR INTERVAL 10 METERS

BONNY RESERVOIR, COLORADO-KANSAS
N3930-W10200/30x60