

DELTA, COLORADO

30X60 MINUTE SERIES (TOPOGRAPHIC)

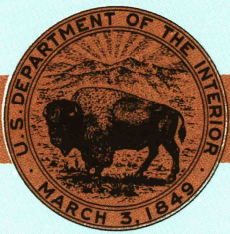
1:100 000-scale metric
topographic map of

Delta
COLORADO



30 X 60 MINUTE QUADRANGLE
SHOWING

- Contours and elevations in meters
- Highways, roads and other manmade structures
- Water features
- Woodland areas
- Geographic names



GEOLOGICAL SURVEY

1980

Produced by the United States Geological Survey
in cooperation with the Soil Conservation Service

Compiled from USGS 1:24 000-scale topographic maps
dated 1960-1973. Partially revised from aerial
photographs taken 1976 and other source data.
Revised information not field checked.
Map edited 1980.

Projection and 10 000-meter grid, zone 12
Universal Transverse Mercator
25 000-foot grid ticks based on Colorado coordinate
system, central and south zones. 1927 North American datum.
To place on the predicted North American Datum 1983 move
the projection lines 5 meters south and 57 meters east.
There may be private inholdings within the boundaries of
the National or State reservations on this map.

CONTOUR INTERVAL 50 METERS

NATIONAL GEODETIC VERTICAL DATUM OF 1929

THIS MAP COMPLIES WITH NATIONAL MAP ACCURACY STANDARDS

FOR SALE BY U.S. GEOLOGICAL SURVEY
DENVER, COLORADO 80225, OR RESTON, VIRGINIA 22092

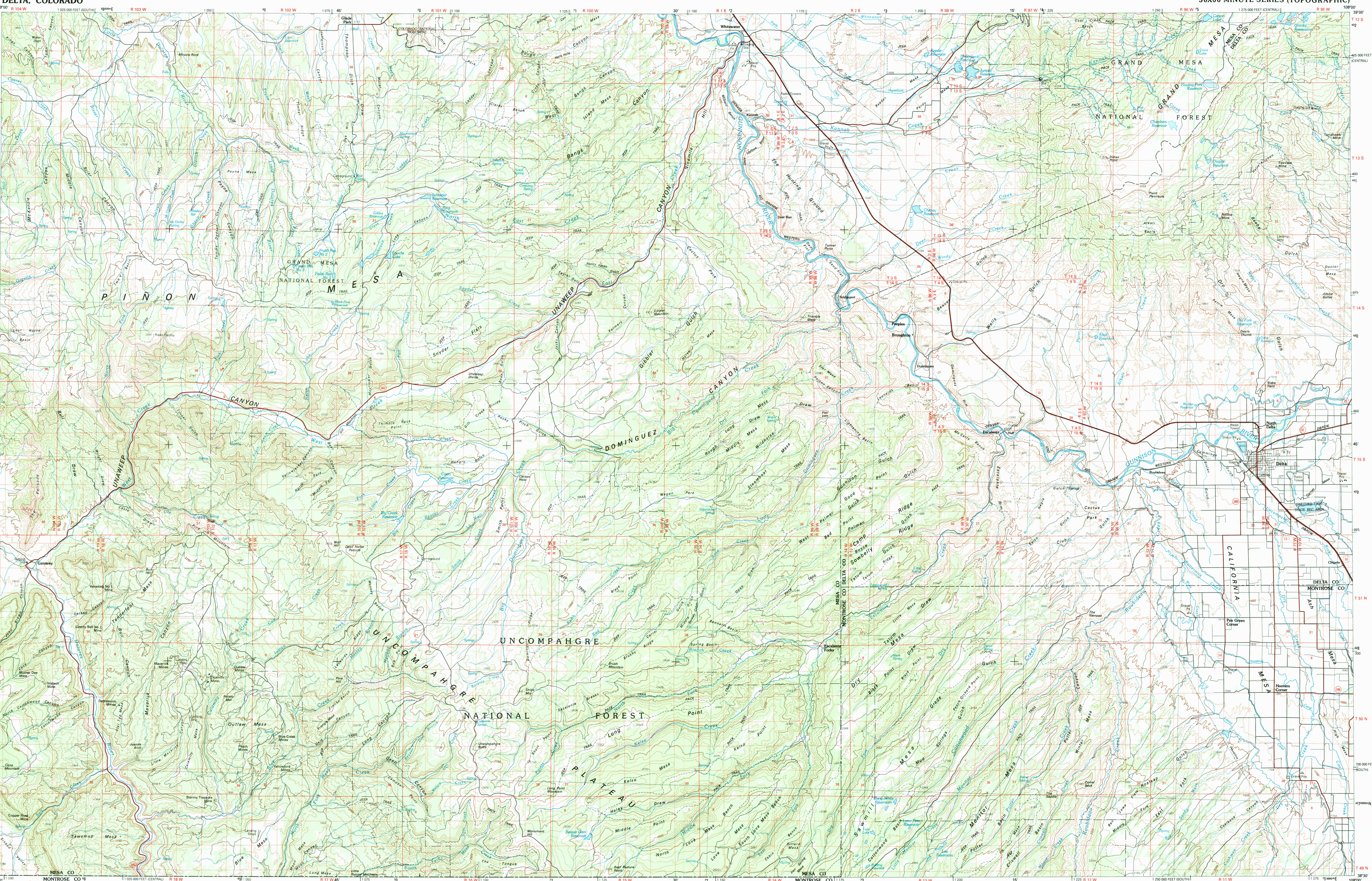
CONVERSION TABLE		DECLINATION DIAGRAM	ADJOINING MAPS	
Meters	Feet		1	2
1	32808		4	
2	65617		6	7
3	98425			
4	131234			
5	164042			
6	196850			
7	229659			
8	262467			
9	295276			
10	328084			
To convert meters to feet multiply by 3.2808		UTM grid convergence (GN) and 1980 magnetic declination (MN) at center of map. Diagram is approximate.	1 Westwater	
To convert feet to meters multiply by 0.3048			2 Grand Junction	



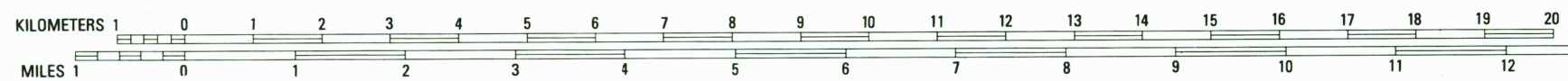
Topographic Map Symbols

Primary highway, hard surface	
Secondary highway, hard surface	
Light duty road, principal street, hard or improved surface	
Other road or street, gravel, hard or improved surface	
Route marker, Interstate; U. S.; State	
Railroad: standard gage; narrow gage	
Bridge; overpass; underpass	
Tunnel: road, railroad	
Built up area; locality; elevation	
Airport; landing field; landing strip	
National boundary	
State boundary	
County boundary	
National or State reservation boundary	
Land grant boundary	
U. S. public lands survey; range, township; section	
Range, township; section line; protracted	
Power transmission line; pipeline	
Dam; dam with lock	
Cemetery; building	
Windmill; water well; spring	
Mine shaft; salt or cave; mine, quarry; gravel pit	
Campground; picnic area; U. S. location monument	
Ruins; cliff dwelling	
Distorted surface: strip mine, lava; sand	
Contours: index, intermediate, supplementary	
Bathymetric contours: index, intermediate	
Stream, lake; perennial; intermittent	
Rapids, large and small; falls, large and small	
Area to be submerged; marsh, swamp	
Land subject to controlled inundation; woodland	
Sand; mangrove	
Drainage; vineyard	

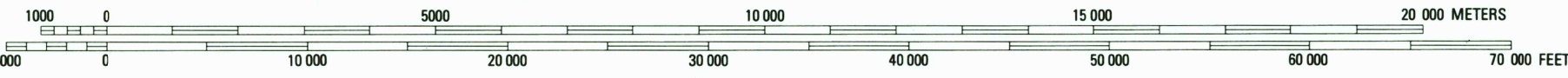
A pamphlet describing topographic maps is available on request



INTERIOR—GEOLOGICAL SURVEY, RESTON, VIRGINIA—1800



SCALE 1:100 000
1 CENTIMETER ON THE MAP REPRESENTS 1 KILOMETER ON THE GROUND
CONTOUR INTERVAL 50 METERS



DELTA, COLORADO
N3830-W10800/30x60

1980