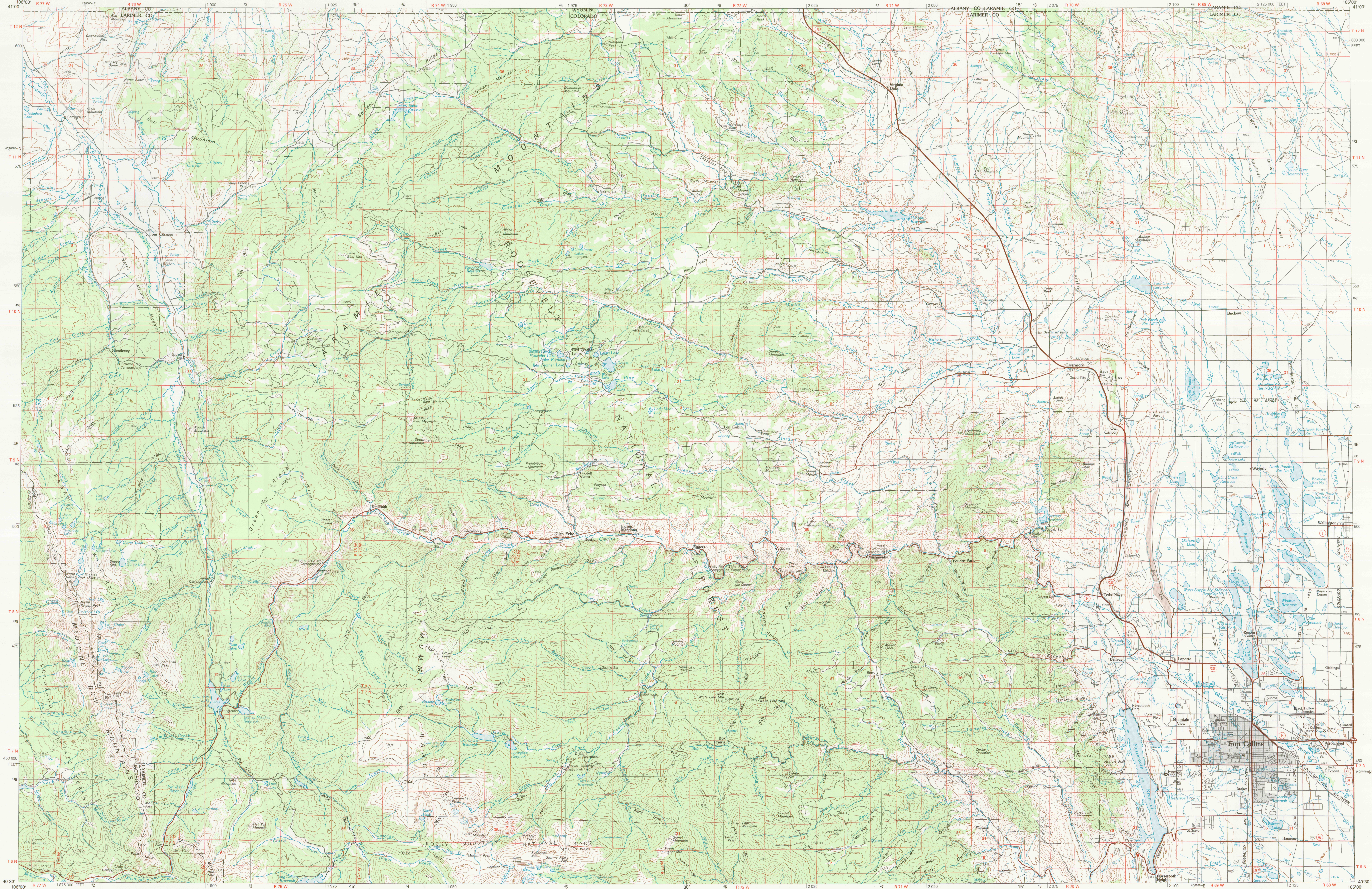


FORT COLLINS, COLORADO

30X60 MINUTE SERIES (TOPOGRAPHIC)

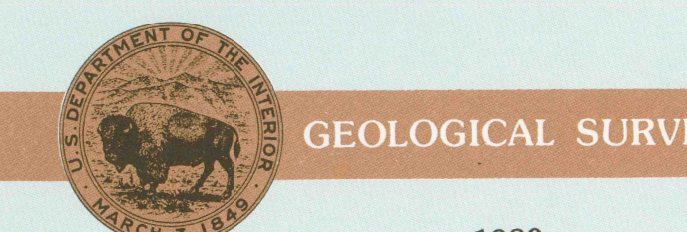


1:100 000-scale metric topographic map of Fort Collins COLORADO



30 X 60 MINUTE QUADRANGLE SHOWING

- Contours and elevations in meters
- Highways, roads and other manmade structures
- Water features
- Woodland areas
- Geographic names



Produced by the United States Geological Survey in cooperation with the Soil Conservation Service

Compiled from USGS 1:24 000-scale topographic maps dated 1960-1967. Partially revised from aerial photographs taken 1975-76 and other source data. Revised information not field checked. Map edited 1980.

Projection and 10 000-meter grid, zone 13 Universal Transverse Mercator

25 000-foot grid ticks based on Colorado coordinate system, north zone, 1927 North American datum. To place on the predicted North American Datum 1983 move the projection lines 6 meters north and 48 meters east.

Certain land lines are omitted because of insufficient data.

There may be private inholdings within the boundaries of the National or State reservations shown on this map.

CONTOUR INTERVAL 50 METERS NATIONAL GEODETIC VERTICAL DATUM OF 1929

THIS MAP COMPLES WITH NATIONAL MAP ACCURACY STANDARDS

CONVERSION TABLE

Meters	Feet
1	3.2808
2	6.5617
3	9.8425
4	13.1234
5	16.4043
6	19.6852
7	22.9660
8	26.2469
9	29.5278
10	32.8084

DECLINATION DIAGRAM

UTM grid convergence (GN) and false magnetic declination (MD) in minutes of arc. Diagram is approximate.

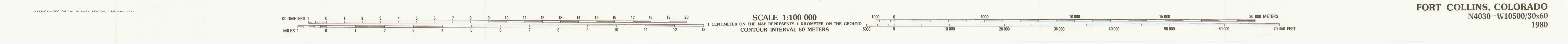
1	2	3
1	2	3
4	5	6
7	8	9

1 Saratoga
2 Laramie
3 Cheyenne
4 Walden
5 Estes
6 Steamboat Springs
7 Estes Park
8 Greeley

FOR SALE BY U. S. GEOLOGICAL SURVEY, DENVER, COLORADO 80225 OR RESTON, VIRGINIA 22092

Topographic Map Symbols

- Primary highway, hard surface
- Secondary highway, hard surface
- Light duty road, principal street, hard or improved surface
- Other road or street, trail
- Route marker: Interstate; U. S. State
- Railroad: standard gage; narrow gage
- Bridge: overpass; underpass
- Tunnel: road; railroad
- Dam
- Built up area; locality; elevation
- Airport; landing field; landing strip
- National boundary
- State boundary
- County boundary
- National or State reservation boundary
- Land grant boundary
- U. S. public lands survey; range, township, section
- Range, township, section line: protracted
- Power transmission line; pipeline
- Dam, dam with lock
- Cemetery; building
- Windmill; water well; spring
- Mine shaft; adit or cave; mine; quarry; gravel pit
- Ruin; site; dwelling
- Campground; picnic area; U. S. location monument
- Area to be submerged; marsh, swamp
- Disturbed surface: strip mine; levee; sand
- Contours: index; intermediate; supplementary
- Bathymetric contours: index; intermediate
- Stream, lake; perennial; intermittent
- Rapids, large and small; falls, large and small
- Area to be submerged; marsh, swamp
- Land subject to controlled inundation; woodland
- Scrub; mangrove
- Orchard; vineyard



A pamphlet describing topographic maps is available on request

G 3700 s100 G4 MAP ROOM

OFFICE COPY LIBRARY USE ONLY