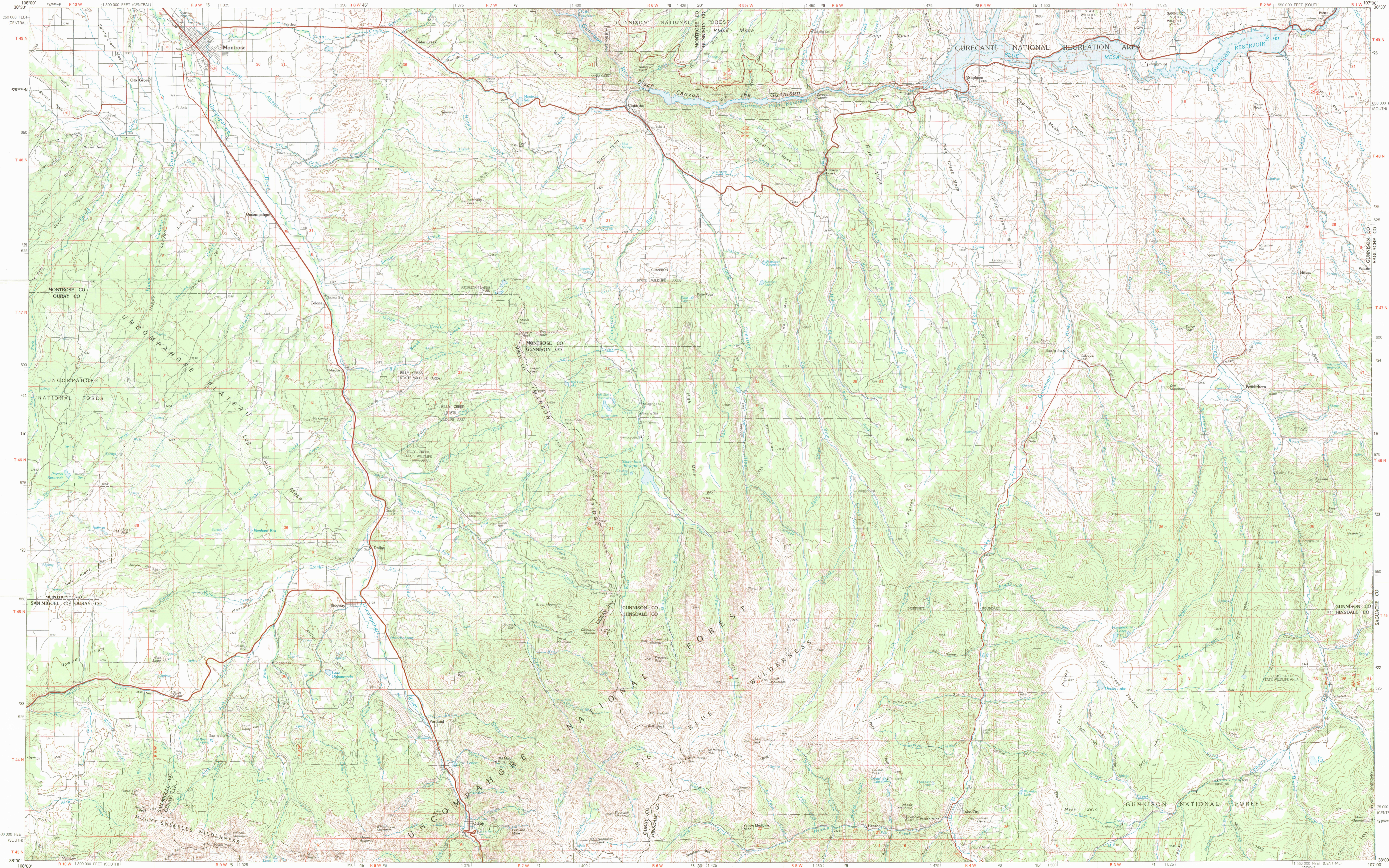
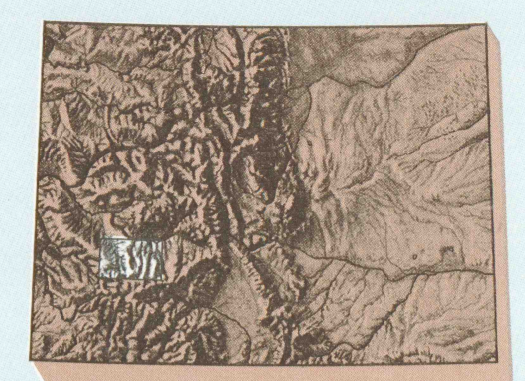


MONTROSE, COLORADO

30X60 MINUTE SERIES (TOPOGRAPHIC)

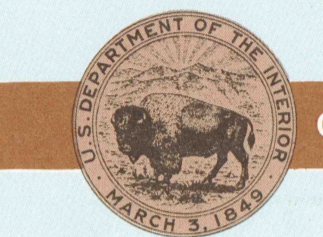


1:100 000-scale metric topographic map of Montrose COLORADO



30 X 60 MINUTE QUADRANGLE SHOWING

- Contours and elevations in meters
- Highways, roads and other manmade structures
- Water features
- Woodland areas
- Geographic names



GEOLOGICAL SURVEY

1983

Produced by the United States Geological Survey

Compiled from USGS 1:24 000-scale topographic maps dated 1954-1973. Partially revised from aerial photographs taken 1978-79 and other source data. Revised information not field checked. Map edited 1983.

Projection and 10 000-meter grid, zone 13 Universal Transverse Mercator. 30 000-foot grid ticks based on Colorado coordinate system, south and central zones. 1927 North American datum. To place on the predicted North American Datum 1983 move the projection lines 4 meters north and 54 meters east.

Where omitted, land lines have not been established or are not shown because of insufficient data. There may be private inholdings within the boundaries of the National or State reservations shown on this map.

CONTOUR INTERVAL 50 METERS NATIONAL GEODETIC VERTICAL DATUM OF 1929

THIS MAP COMPLES WITH NATIONAL MAP ACCURACY STANDARDS

Meters	Feet
1	3.2808
2	6.5617
3	9.8425
4	13.1234
5	16.4043
6	19.6852
7	22.9660
8	26.2469
9	29.5278
10	32.8084

To convert meters to feet multiply by 3.2808. To convert feet to meters multiply by 0.3048.

FOR SALE BY U. S. GEOLOGICAL SURVEY, DENVER, COLORADO 80225 OR RESTON, VIRGINIA 22092

Topographic Map Symbols

- Primary highway, hard surface
- Secondary highway, hard surface
- Light duty road, principal street, hard or improved surface
- Other road or street, trail
- Route marker: Interstate, U. S. State
- Railroad: standard gage; narrow gage
- Bridge: overpass; underpass
- Tunnel: road; railroad
- Built up area, building elevation
- Airport: landing field; landing strip
- National boundary
- County boundary
- National or State reservation boundary
- Land grant boundary
- U. S. public lands survey: range, township, section
- Range, township; section line: protracted
- Power transmission line: pipeline
- Dam; dam with lock
- Canal; building
- Windmill; water well; spring
- Mine shaft; adit or cave; mine, quarry; gravel pit
- Compond; picnic area; U. S. location monument
- Rune; cliff dwelling
- Disturbed surface: strip mine, lava, sand
- Contours: index, intermediate, supplementary
- Bathymetric contours: index, intermediate
- Stream, lake: perennial; intermittent
- Rapids, large and small; falls, large and small
- Area to be submerged; marsh, swam
- Land subject to controlled inundation; woodland
- Scrub; mangrove
- Orchard; vineyard

SCALE 1:100 000

MONTROSE, COLORADO N3800 - W10700/30x60

1983

Office copy library use only. A pamphlet describing topographic maps is available on request. G 3700 \$700 .G4 MAP ROOM