


USGS
science for a changing world

1:100 000-scale metric
topographic map of
Silverton
COLORADO

RECEIVED
MAR 3 1 2000
USGS AND
HISTORICAL ARCHIVES

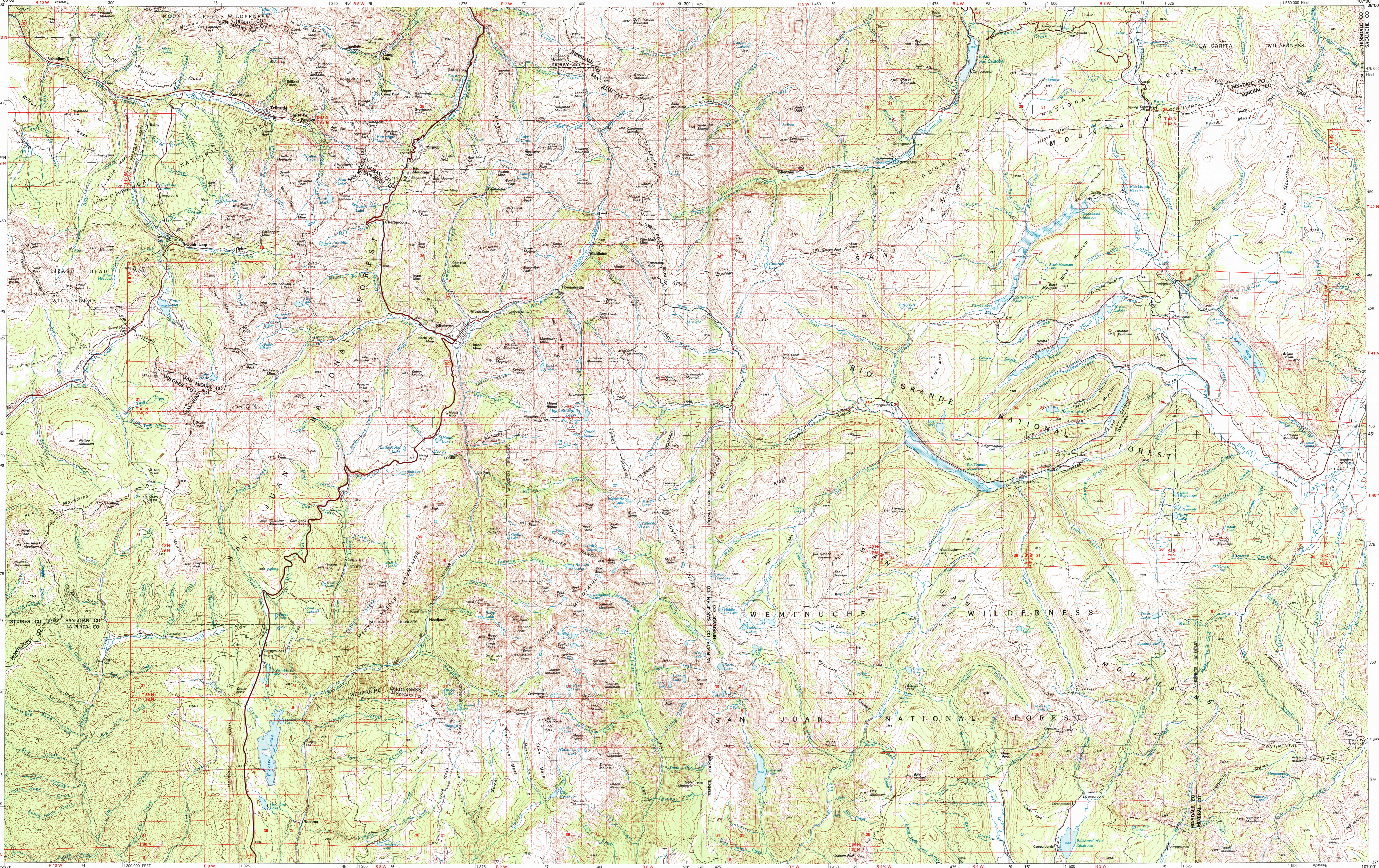


30 X 60 MINUTE QUADRANGLE
SHOWING

- Contours and elevations in meters
- Highways, roads and other manmade structures
- Water features
- Woodland areas
- Geographic names

U.S. GEOLOGICAL SURVEY

1982



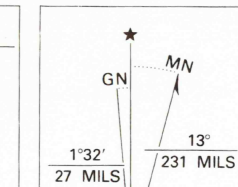
Produced by the United States Geological Survey
Compiled from USGS 1:24 000-scale topographic maps dated 1953-1973. Planimetry revised from aerial photographs taken 1975-79 and other source data. Revised information not field checked. Map edited 1982

1927 North American Datum (NAD 27). Projection and 10 000-meter grid: Universal Transverse Mercator, zone 13 25 000-foot ticks. Colorado coordinate system, south zone. The difference between NAD 27 and North American Datum of 1983 (NAD 83) is too small to show at this scale. The values of the shift between the datums for 7.5-minute intersections are given in USGS Bulletin 1875

Where omitted land lines have not been established. There may be private inholdings within the boundaries of the National or State reservations shown on this map.

CONTOUR INTERVAL 50 METERS
NATIONAL GEODETIC VERTICAL DATUM OF 1929

THIS MAP COMPLIES WITH NATIONAL MAP ACCURACY STANDARDS
FOR SALE BY U.S. GEOLOGICAL SURVEY,
P.O. BOX 25286, DENVER, COLORADO, 80225

CONVERSION TABLE		DECLINATION DIAGRAM		ADJOINING MAPS		
Meters	Feet	1	2	1	2	3
1	3.2808			4	5	5
2	6.5617			4	5	6
3	9.8425			5	6	7
4	13.1234			6	7	8
5	16.4042			7	8	
6	19.6850			8		
7	22.9659					
8	26.2467					
9	29.5275					
10	32.8084					

To convert meters to feet multiply by 3.2808
To convert feet to meters multiply by 0.3048

UTM grid convergence (GM) and magnetic declination (MD) at center of map. Diagram is approximate.

3 Neotoma
2 Montrose
1 Saguache
4 Dora Creek
5 Del Norte
6 Cortez
7 Durango
8 Antonito



Topographic Map Symbols

Primary highway, hard surface	
Secondary highway, hard surface	
Light duty road, principal street, hard or improved surface	
Other road or street, mail	
Route marker: Interstate, U.S., State	
Railroad: standard gage; narrow gage	
Bridge, overpass, underpass	
Tunnel: road, railroad	
Bank up area, locality, elevation	
Airport; landing field; landing strip	
National boundary	
State boundary	
County boundary	
National or State reservation boundary	
Land grant boundary	
U.S. public lands survey; range, township, section	
Range, township, section line; protected	
Power transmission line; pipeline	
Dam; dam with lock	
Cemetery; building	
Windmill; water well; spring	
Mine shaft; adit or cave; mine, quarry; gravel pit	
Campground; picnic area; U.S. location monument	
Ruins; cliff dwelling	
Distorted surface: strip mine, lava, sand	
Contours: index; intermediate; supplementary	
Bathymetric contours: index; intermediate	
Stream, lake: perennial; intermittent	
Rapids, large and small; falls, large and small	
Area to be submerged; marsh, swamp	
Land subject to controlled inundation; woodland	
Scrub; mangrove	
Orchard; vineyard	