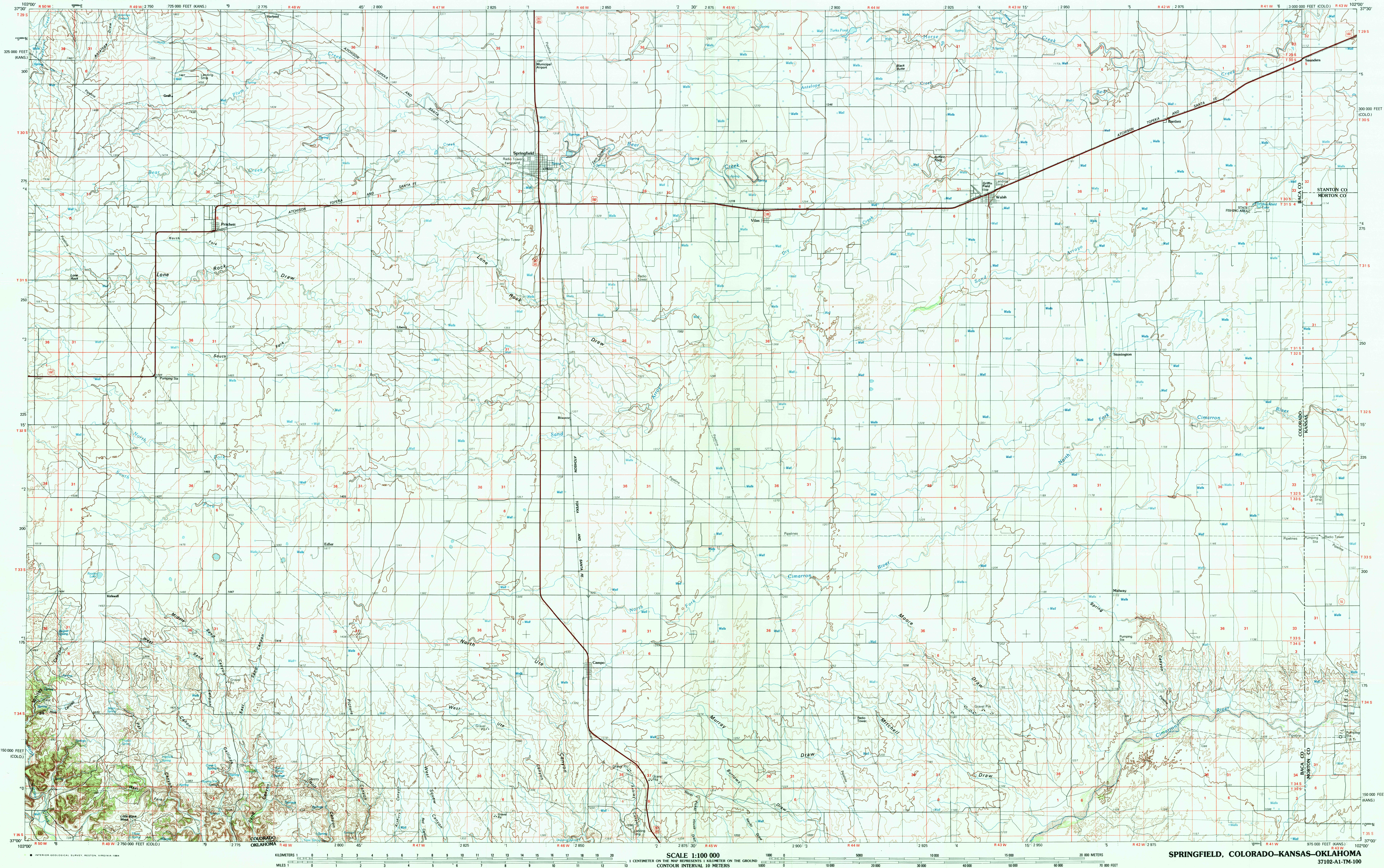
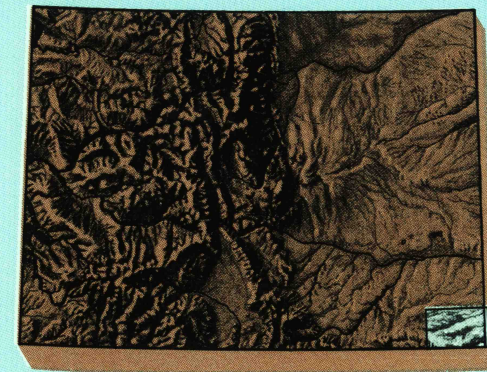


# SPRINGFIELD, COLORADO-KANSAS-OKLAHOMA

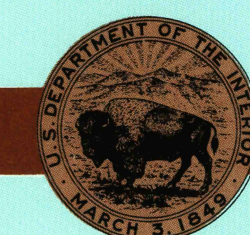
30X60 MINUTE SERIES (TOPOGRAPHIC)



## Springfield COLORADO-KANSAS-OKLAHOMA

 1:100 000-scale metric  
topographic map

 30 X 60 MINUTE QUADRANGLE  
SHOWING

- Contours and elevations in meters
- Highways, roads and other manmade structures
- Water features
- Woodland areas
- Geographic names



GEOLOGICAL SURVEY

1984/84

 Produced by the United States Geological Survey  
Compiled from USGS 1:24 000-scale topographic maps dated 1978-79. Map edited 1984

 Projection and 10 000-meter grid, zone 13  
Universal Transverse Mercator  
25 000-foot grid ticks based on Colorado coordinate system, south zone, and Kansas coordinate system, south zone 1927 North American Datum  
To place on the predicted North American Datum 1983 move the projection lines 2 meters north and 42 meters east  
Land lines are omitted in areas of extensive tract surveys

There may be private inholdings within the boundaries of the National or State reservations shown on this map

 CONTOUR INTERVAL 10 METERS  
NATIONAL GEODETIC VERTICAL DATUM OF 1929

THIS MAP COMPLIES WITH NATIONAL MAP ACCURACY STANDARDS

CONVERSION TABLE		DECLINATION DIAGRAM		ADJOINING MAPS		
Meters	Feet			1	2	3
1	3.2808			4	5	
2	6.5617			6	7	8
3	9.8425					
4	13.1234					
5	16.4042					
6	19.6850					
7	22.9659					
8	26.2467					
9	29.5275					
10	32.8084					

 To convert meters to feet multiply by 3.2808  
To convert feet to meters multiply by 0.3048  
UTM grid convergence (G) and 156 magnetic declination (M) at center of map. Diagram is approximate

 FOR SALE BY U. S. GEOLOGICAL SURVEY, DENVER, COLORADO 80225  
OR RESTON, VIRGINIA 22092

## Topographic Map Symbols

Primary highway, hard surface	Secondary highway, hard surface	Light duty road, principal street, hard or improved surface	Other road or street; trail	Route marker: Interstate U. S. State	Railroad: standard gage, narrow gage	Bridge: overpass, underpass	Tunnel: road, railroad	Built up area: locality, elevation	Airport: landing field, landing strip	National boundary	State boundary	County boundary	National or State reservation boundary	Land grant boundary	U. S. public lands survey: range, township, section	Range: township, section line, preserved	Power transmission line: pipeline	Dam: dam with lock	Cemetery: building	Widened: water well, spring	Mine shaft: adit or cave, mine, quarry, gravel pit	Campground, picnic area, U. S. location monument	Ruins: cliff dwelling	Distorted surface: strip mine, lava, sand	Contours: index, intermediate, supplementary	Bathymetric contours: index, intermediate	Swamp: lake, perennial, intermittent	Rapids, large and small, falls, large and small	Area to be submerged, marsh, swamp	Land subject to controlled inundation; woodland	Scrub: mangrove	Orchard; vineyard
-------------------------------	---------------------------------	---	-----------------------------	--------------------------------------	--------------------------------------	-----------------------------	------------------------	------------------------------------	---------------------------------------	-------------------	----------------	-----------------	--	---------------------	---	--	-----------------------------------	--------------------	--------------------	-----------------------------	--	--	-----------------------	---	--	---	--------------------------------------	---	------------------------------------	---	-----------------	-------------------

A pamphlet describing topographic maps is available on request

 SPRINGFIELD, COLORADO-KANSAS-OKLAHOMA  
37102-A1-TM-100

1984