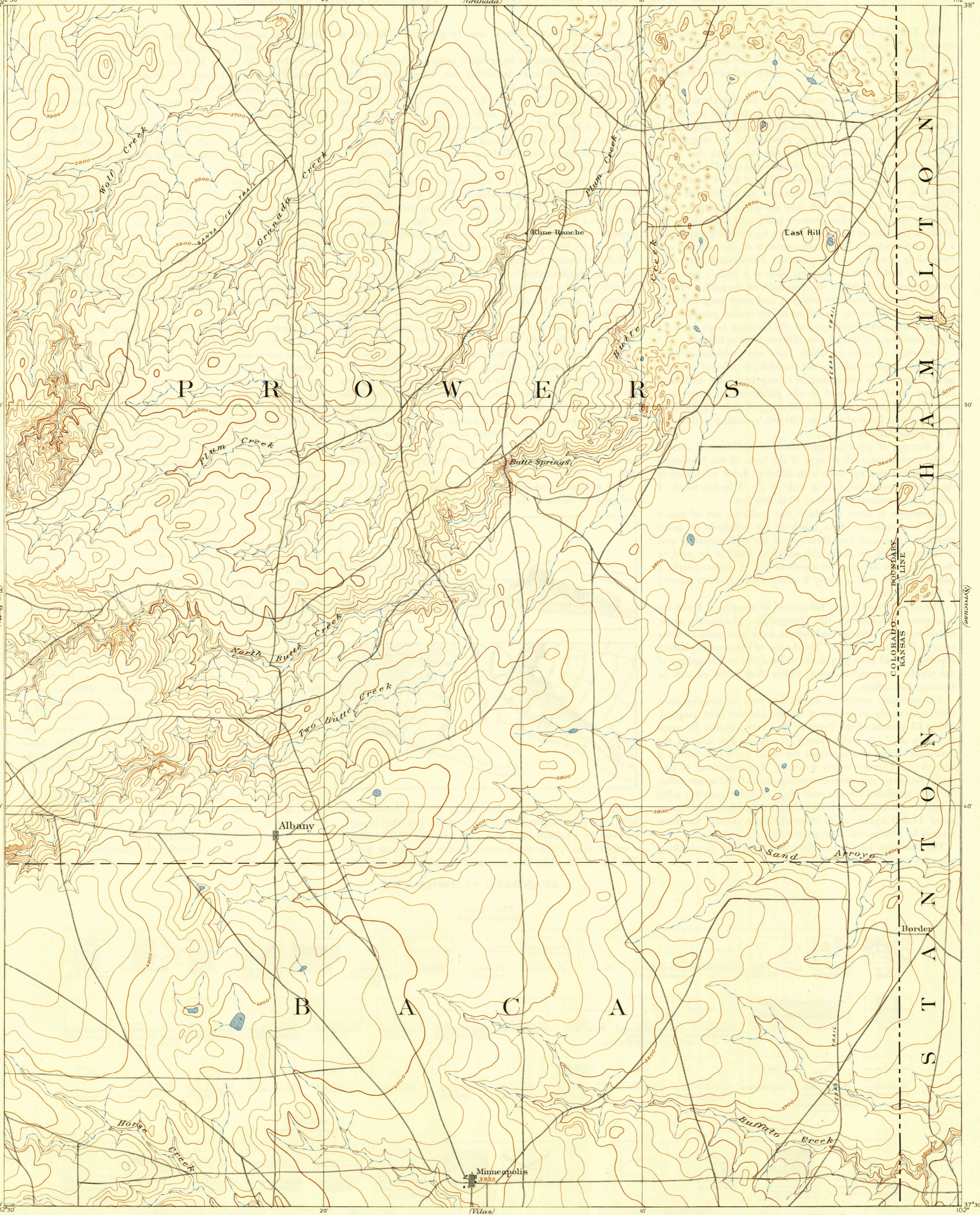
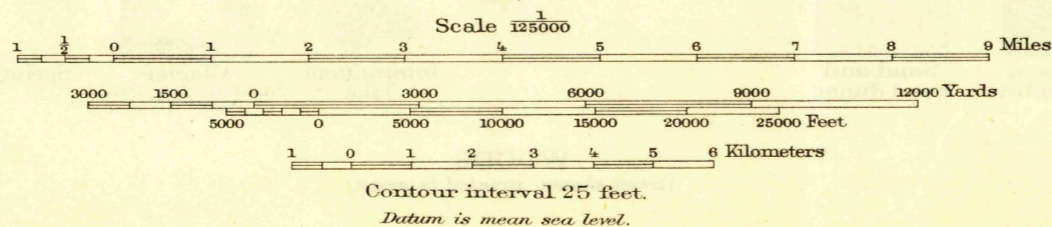


U.S.G.S.
FILE COPY
Inspection and Printing



A.H. Thompson, Geographer.
Willard D. Johnson, Topographer in charge.
Topography by R. B. Marshall.
Surveyed in 1890.



Surveyed by reconnaissance methods Edition of Oct. 1893 reprinted 1946.

USCS
Historical File
Topographic Division
FILE COPY
Inspection and Printing

ALBANY, COL.-KANS.
N3730-W10200/30

5230

JUN 27 1946