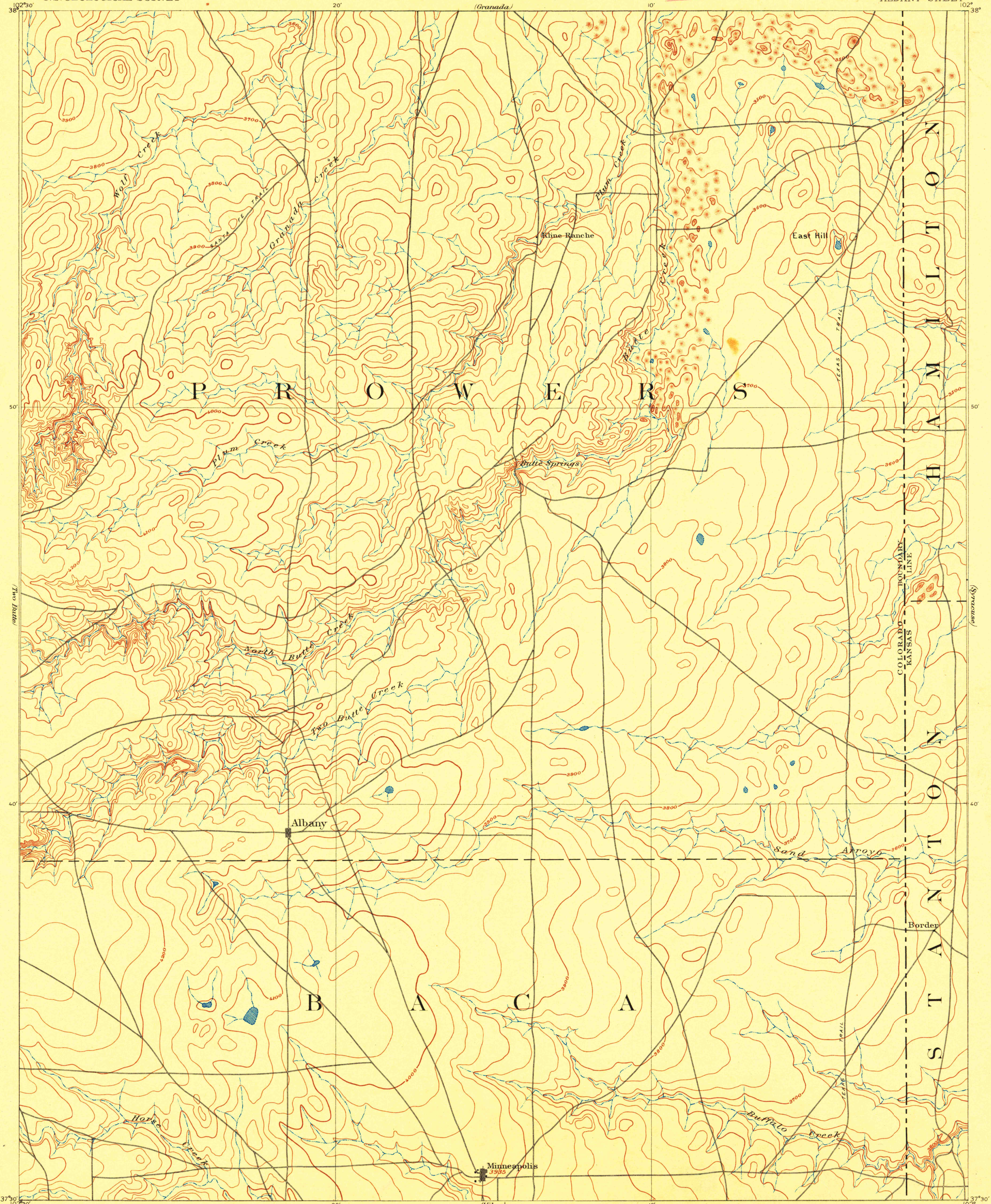
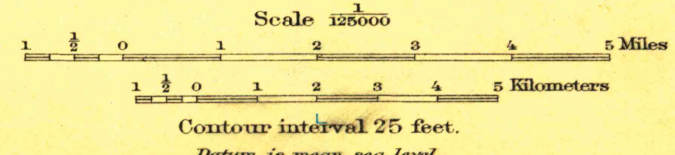


FILE COPY  
Inspection and Editing



A.H. Thompson, Geographer.  
Willard D. Johnson, Topographer in charge.  
Topography by R. B. Marshall.  
Surveyed in 1890.

U.S.G.S.  
FILE COPY  
Inspection and Editing.



USGS  
Historical File  
Topographic Division

MAY 27 1927 (2095)

Edition of Oct. 1893 reprinted 1927.  
Polyconic projection.

ALBANY, COL.-KANS.

2095