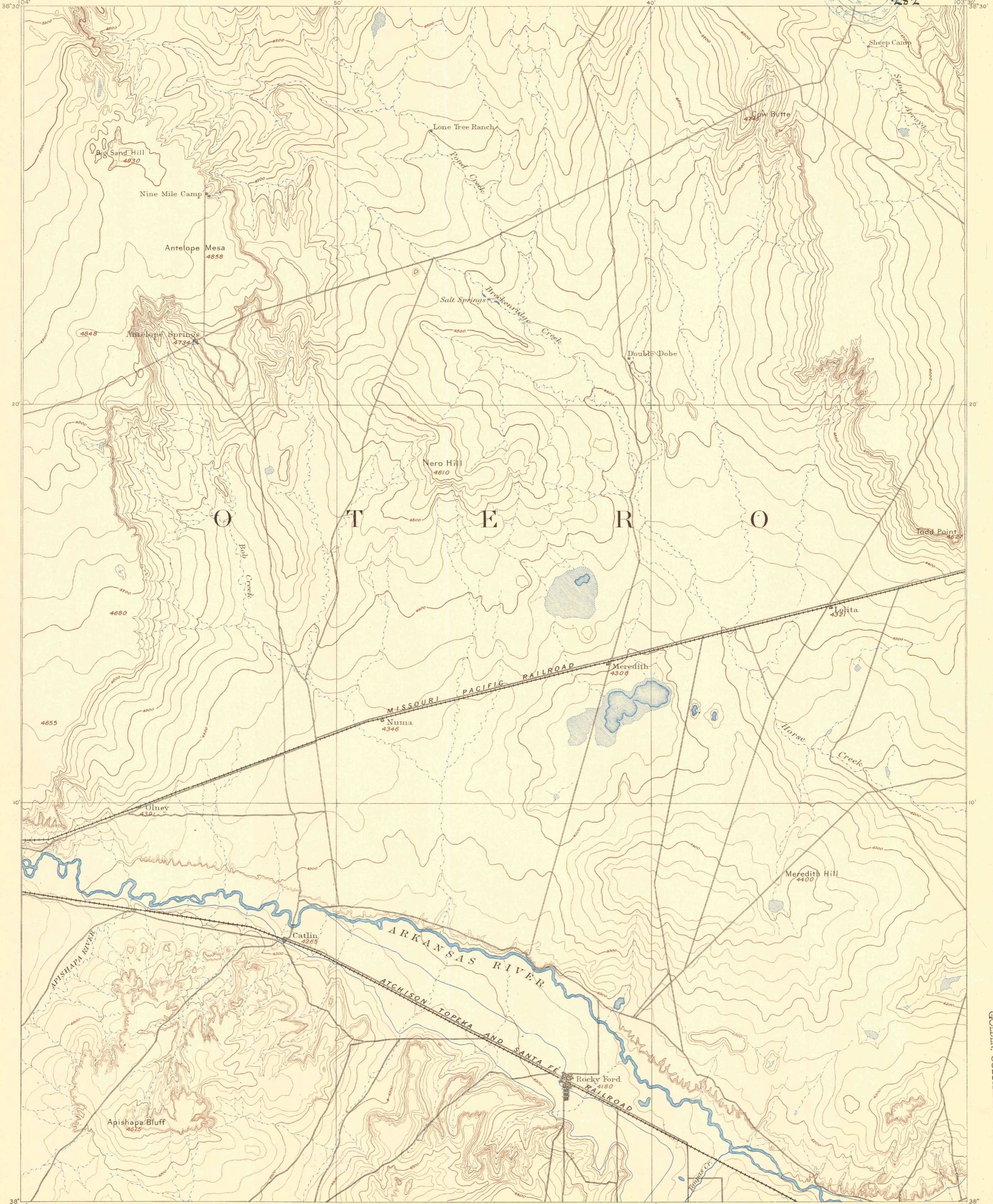
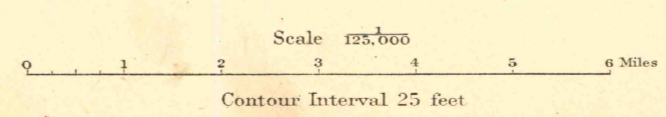


STATE ENGINEER & SURVEYOR
RECEIVED
FEB 8 1892
CATLIN SHEET
282



O T T E R R I V E R

A. H. Thompson, Geographer.
Willard D. Johnson, Topographer in charge.
Triangulation by J. W. Hays.
Topography by W. B. Corse, Perry Fuller, J. C. McGuire and W. S. Post.
Under direction of J. W. Hays.
Surveyed in 1889



Edition of Nov. 1891.

LIBRARY USE ONLY
OFFICE COPY

T(788)
K21
Copy 2
Catlin

LIBRARY
COLORADO SCHOOL OF MINES
GOLDEN, COLORADO