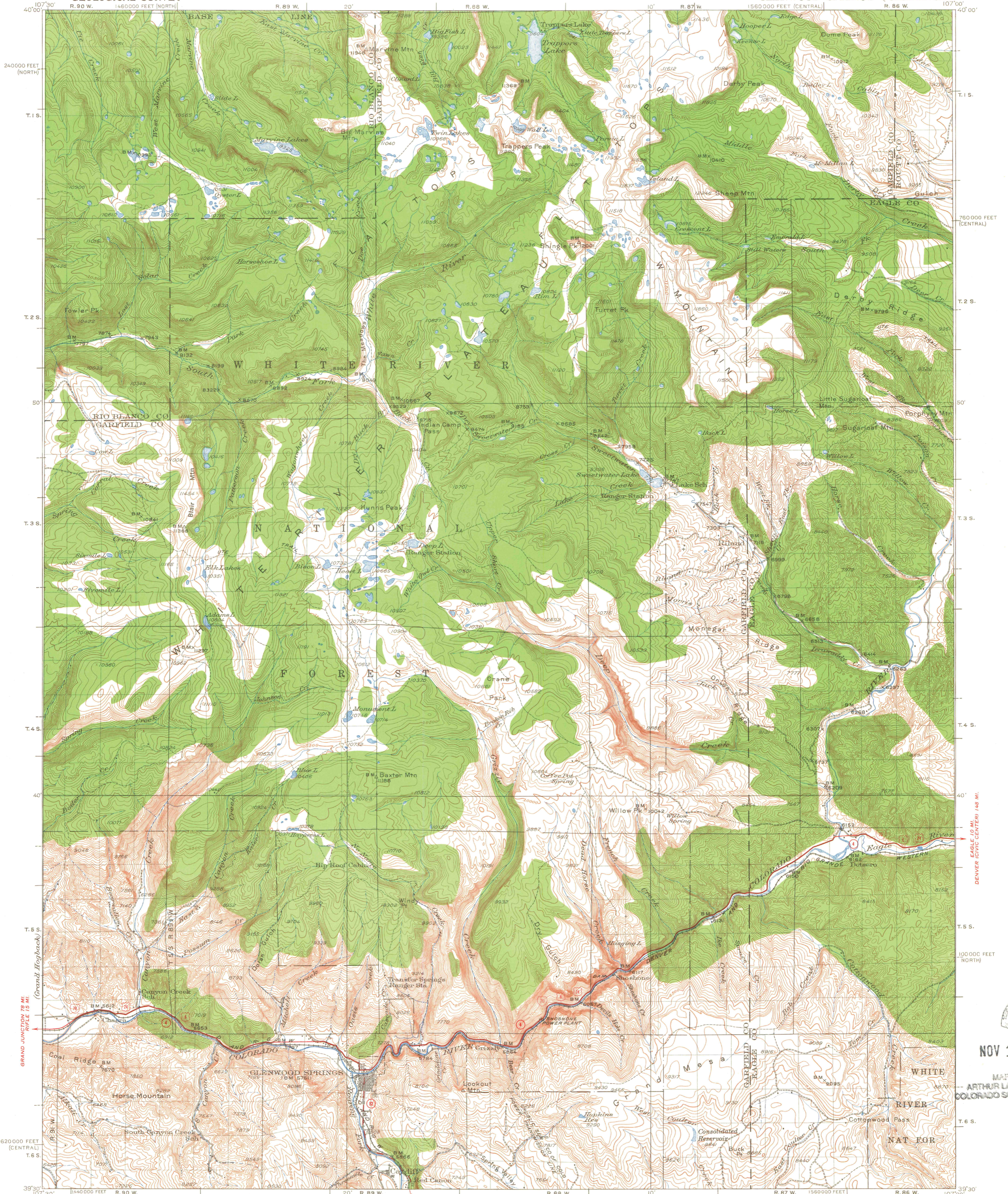


UNITED STATES
DEPARTMENT OF THE INTERIOR
GEOLOGICAL SURVEY

COLORADO
GLENWOOD SPRINGS QUADRANGLE
1560000 FEET (CENTRAL)
R. 86 W. 107°00'



Topography by B.A. Jenkins and S.T. Penick
Control by U.S. Geological Survey
Surveyed in 1925 and 1927

ROAD CLASSIFICATION
 Heavy-duty ——— Light-duty ———
 Medium-duty ——— Unimproved dirt ———
 Interstate Route U.S. Route State Route

APPROXIMATE MEAN DECLINATION, 1927

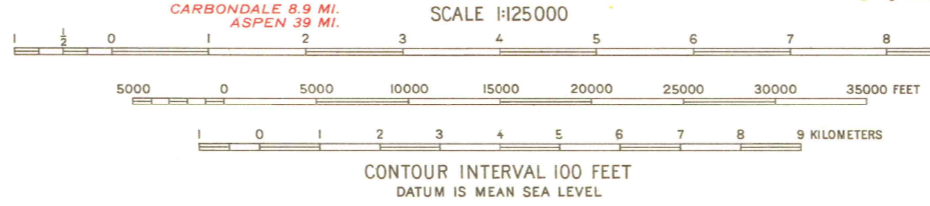


DIAGRAM OF TOWNSHIP

6	5	4	3	2	1
7	8	9	10	11	12
18	17	16	15	14	13
19	20	21	22	23	24
30	29	28	27	26	25
31	32	33	34	35	36

Polyconic projection. 1927 North American datum
 20 000 foot grids based on Colorado (Central)
 and Colorado (North) rectangular coordinate system
 Land lines pertaining to T. 4 S. R. 88 W.
 and T. 3-4 S. R. 87 W. are omitted because
 land plats and topography cannot be reconciled

GLENWOOD SPRINGS, COLO.
 N 3930-W 10700/30



NOV 12 1997

MAP FROM
 ARTHUR LAKES LIBRARY
 COLORADO SCHOOL OF MINE

LIBRARY USE ONLY

OFFICE COPY