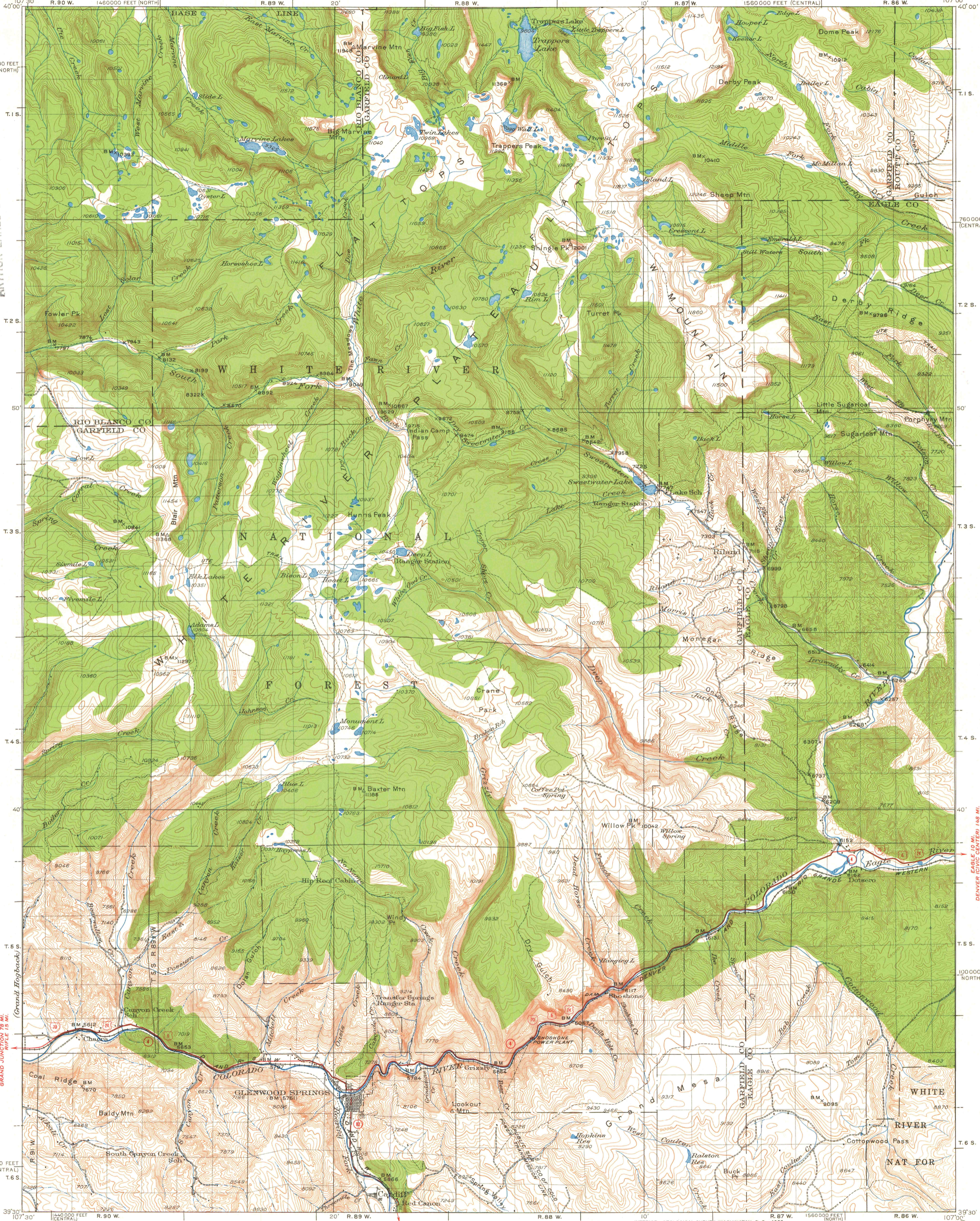


UNITED STATES
DEPARTMENT OF THE INTERIOR
GEOLOGICAL SURVEY

COLORADO
GLENWOOD SPRINGS QUADRANGLE

JUL 15 1960

MAP ROOM
ARTHUR LAKES LIBRARY



Topography by B.A. Jenkins and S.T. Fenick
Control by U.S. Geological Survey
Surveyed in 1925 and 1927

ROAD CLASSIFICATION

Heavy-duty	Light-duty
Medium-duty	Unimproved dirt
Interstate Route	U. S. Route
	State Route

APPROXIMATE MEAN
DECLINATION, 1927

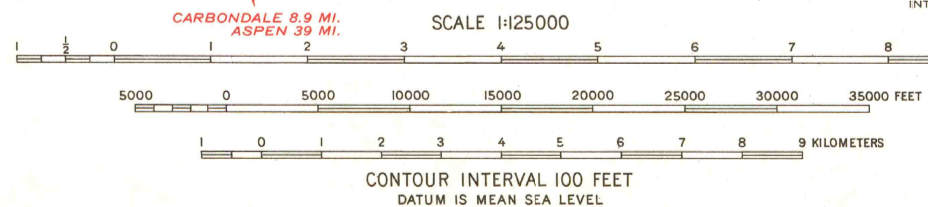


DIAGRAM OF TOWNSHIP

6	5	4	3	2	1
7	8	9	10	11	12
18	17	16	15	14	13
19	20	21	22	23	24
30	29	28	27	26	25
31	32	33	34	35	36

1560000 FEET NORTH
Polyconic projection, 1927 North American datum
20 000 foot grids based on Colorado (Central)
and Colorado (North) rectangular coordinate system
Land lines pertaining to T. 4 S. R. 88 W.
and T. 3-4 S. R. 87 W. are omitted because
land plats and topography cannot be reconciled

GLENWOOD SPRINGS, COLO.
N 39°30' - W 107°00' / 30

FOR SALE BY U. S. GEOLOGICAL SURVEY, DENVER 25, COLORADO OR WASHINGTON 25, D. C.
A FOLDER DESCRIBING TOPOGRAPHIC MAPS AND SYMBOLS IS AVAILABLE ON REQUEST

1927

