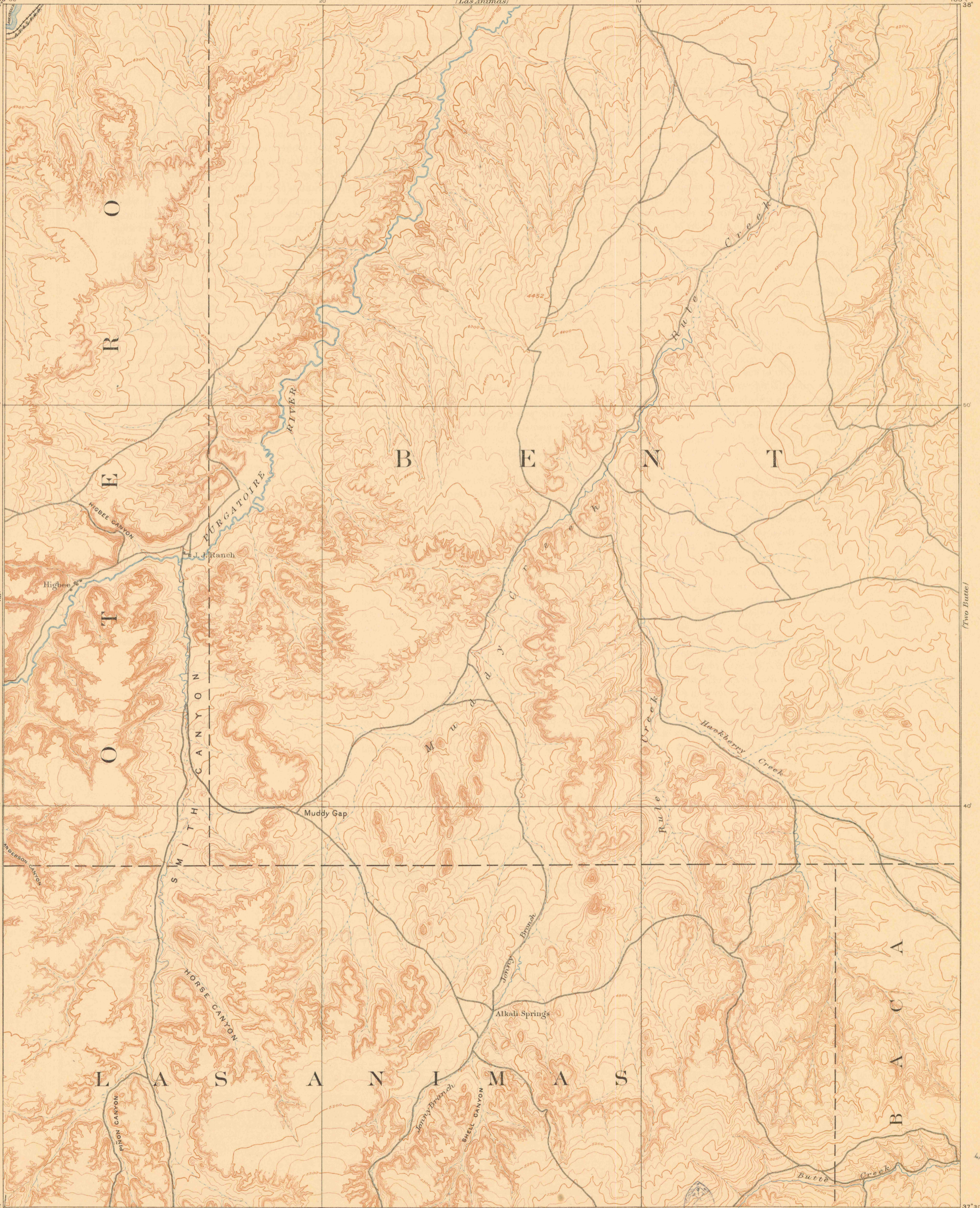


Colorado
School of Mines
Dep't of Geol. & Min.

U.S. GEOLOGICAL SURVEY
GEORGE OTIS SMITH, DIRECTOR

RECONNAISSANCE MAP

COLORADO
HIGBEE SHEET



A.H. Thompson, Geographer.
Willard D. Johnson, Topographer in charge.
Triangulation by A.C. Barclay.
Topography by R.C. McKinney.

Surveyed in 1889.

Scale 125,000
Contour Interval 25 and 50 feet

NOV 13 1997

Edition of Dec. 1893, reprinted Oct. 1912.

MAP ROOM
ARTHUR LAKES LIBRARY
COLORADO SCHOOL OF MINES

DEPT. OF GEOLOGY
COLO. SCHOOL. MINES
Working Collection

HIGBEE
OFFICE COPY

LIBRARY USE ONLY