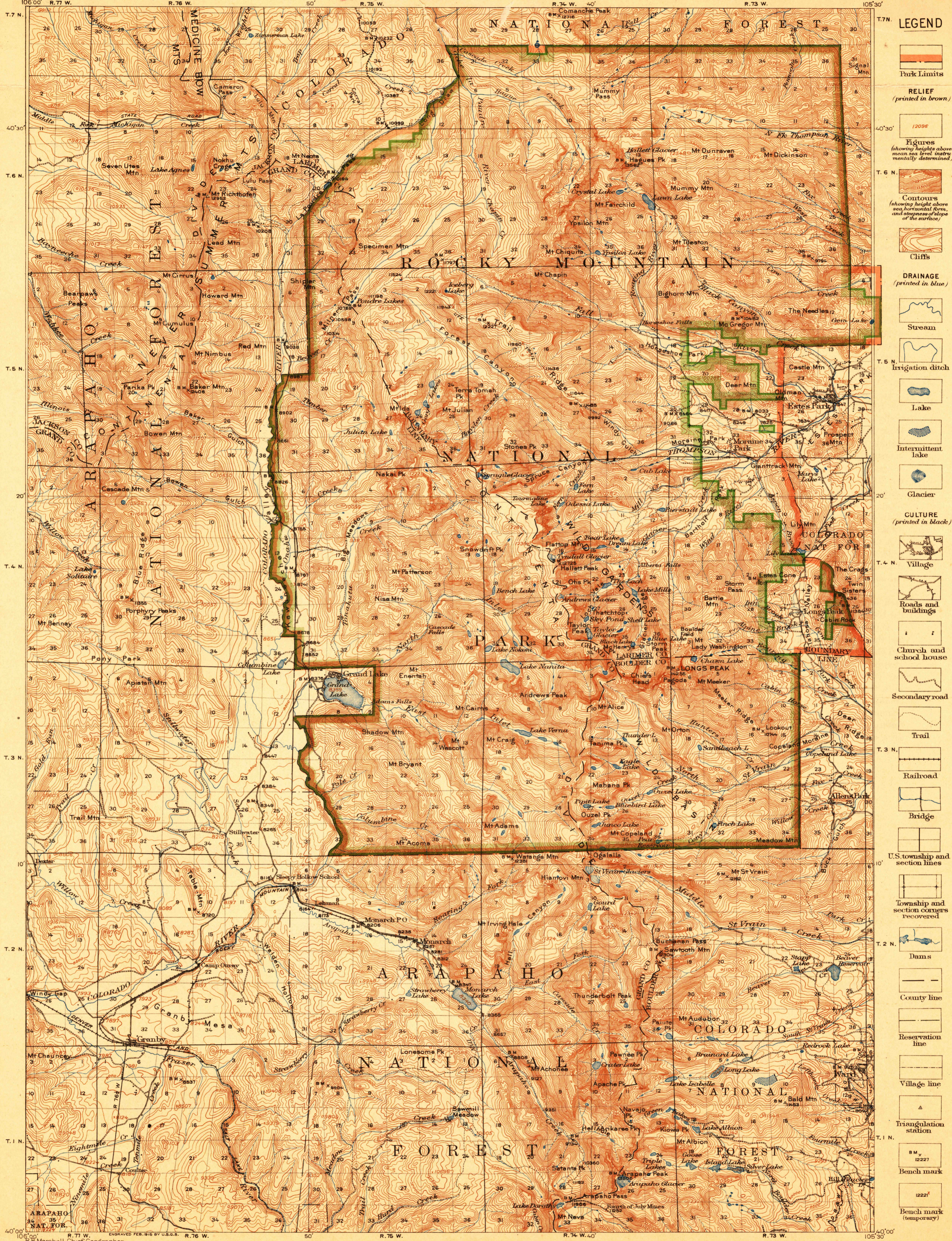


U.S.G.S.
FILE COPY
Inspection and Editing

TOPOGRAPHIC MAP OF
ROCKY MOUNTAIN NATIONAL PARK
COLORADO



- LEGEND**
- Park Limits
 - RELIEF (printed in brown)
 - Figures (showing heights above mean sea level; mentally determined)
 - Contours (showing height above sea level; horizontal form, and steepness of slope of the surface)
 - Cliffs
 - DRAINAGE (printed in blue)
 - Stream
 - Irrigation ditch
 - Lake
 - Intermittent lake
 - Glacier
 - CULTURE (printed in black)
 - Village
 - Roads and buildings
 - Church and school house
 - Secondary road
 - Trail
 - Railroad
 - Bridge
 - U.S. township and section lines
 - Township and section corners recovered
 - Dams
 - County line
 - Reservation line
 - Village line
 - Triangulation station
 - Bench mark
 - Bench mark (temporary)

Scale 1:25000
1 2 3 4 5 Miles
1 2 3 4 5 Kilometers
Contour interval 100 feet.
Datum is mean sea level.

RB. Marshall, Chief Geographer.
Sledge Tatum, Geographer in charge.
Topography by B.C. Jenkins, C.A. Ecklund, and Cornelius Schurr.
Control by C. F. F. Hart, C. B. Kendall, C. A. Ecklund, and Roscoe Reeves.
Surveyed in 1912-1915.

Polyconic projection, North American datum.
Boundary of Rocky Mountain National Park as revised by act of Congress approved June 9, 1926.
ROCKY MOUNTAIN NATIONAL PARK
Edition of 1919, reprinted 1922.

USGS
Historical File
Topographic Division

MAR. 1-1926 (10,075)