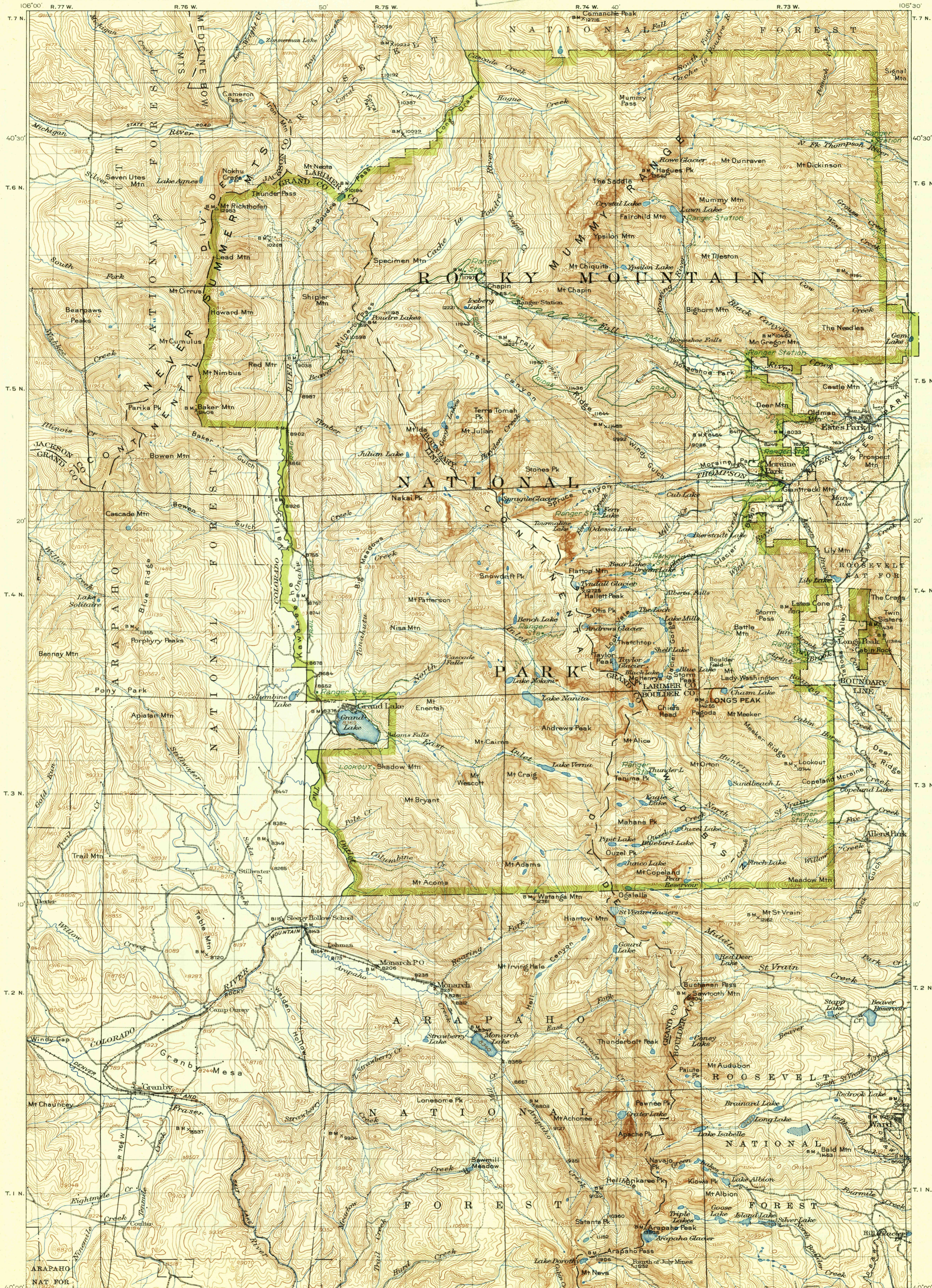


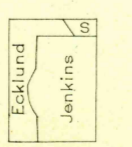
U.S.G.S.
FILE COPY
Inspection and Editing.



- LEGEND**
- Park Limits
 - RELIEF**
(printed in brown)
 - Figures
(showing height above mean sea level instrumentally determined)
 - Contours
(showing height above sea level, form, and steepness of slope of the surface)
 - Cliffs
 - DRAINAGE**
(printed in blue)
 - Stream
 - Irrigation ditch
 - Lake
 - Intermittent lake
 - Glacier
 - CULTURE**
(printed in black)
 - Village
 - Roads and buildings
 - Church and school house
 - Secondary road
 - Trail
 - Railroad
 - Bridge
 - U.S. township and section lines
 - Township and section corners recovered
 - Dams
 - County line
 - Reservation line
 - Village line
 - Triangulation station
 - Bench mark
 - Bench mark (temporary)

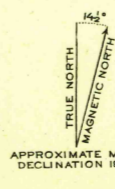
R.B. Marshall, Chief Geographer.
Sledge Tatum, Geographer in charge.
Topography B.A. Jenkins and C.A. Ecklund.
Control by C.F. Urquhart and C.A. Ecklund.
Surveyed in 1912-1915

Due to the small percentage of corners recovered, land lines are not reconciled to the topography except in certain areas. In the vicinity of T. 5. N., R. 7.5 and 7.6 W., lines are known to be erroneously placed.



Scale 1:25000
0 1 2 3 4 5 Miles
0 1 2 3 4 5 Kilometers
Contour interval 100 feet.
Datum is mean sea level.

Roads and trails added 1940
by National Park Service



USGS
Historical File
Topographic

COLO.
ROCKY MOUNTAIN NATIONAL PARK
Edition of 1913, reprinted 1940.
N4000-W10530/30

U.S.G.S.
FILE COPY
Inspection and Editing.