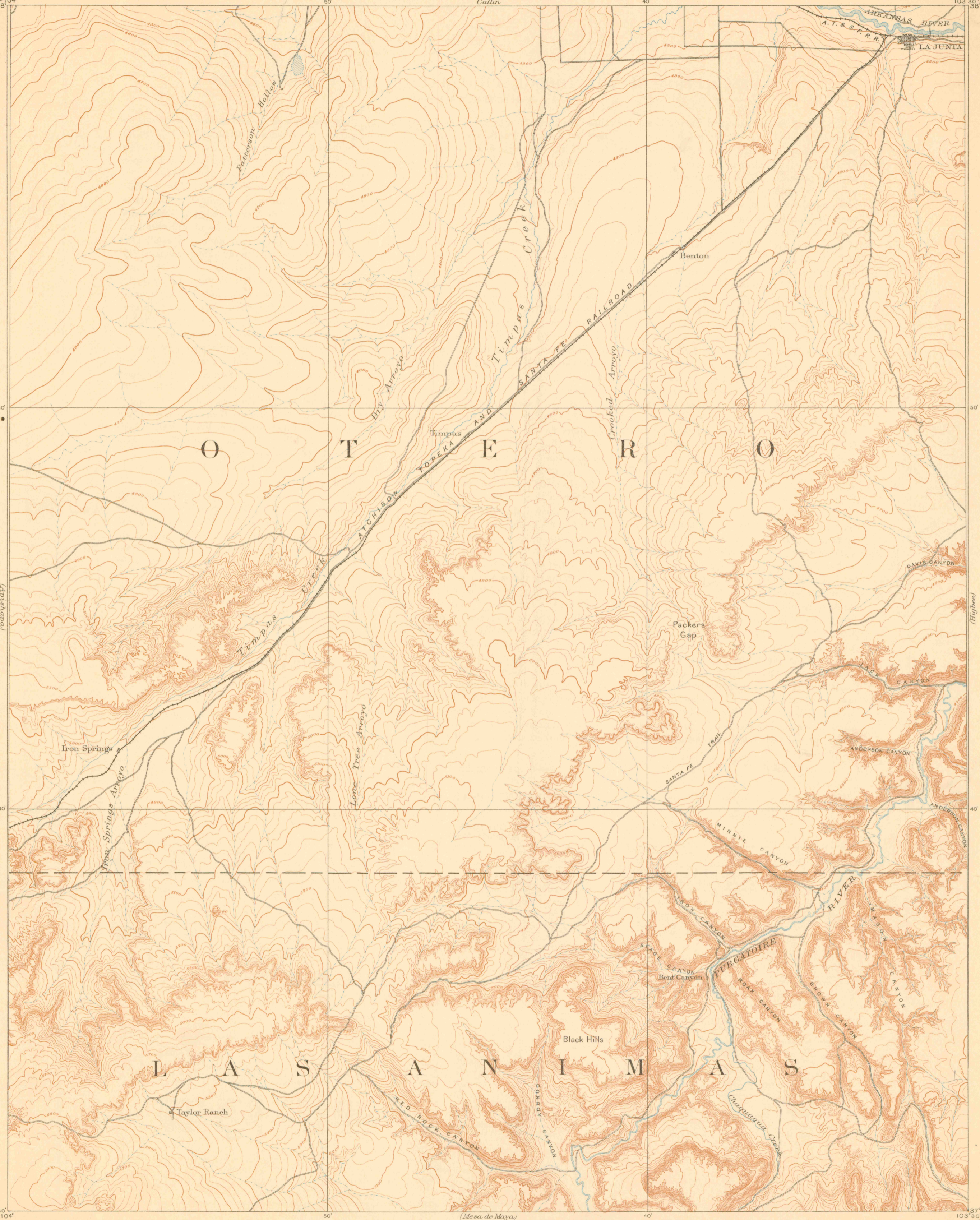


The Public Library
of the
City of Leadville.



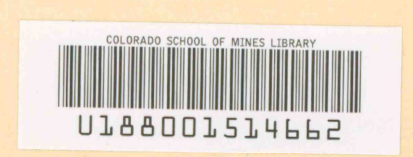
A. H. Thompson, Geographer.
Willard D. Johnson, topographer in charge.
Triangulation by A. C. Barclay.
Topography by Willard D. Johnson.
Surveyed in 1889.

Scale 1:25,000
Contour Interval 25 and 50 feet

Edition of Feb. 1894, reprinted Aug. 1909.

The Public Library
of the
City of Leadville.

OFFICE COPY
LIBRARY USE ONLY



TIMPAS

JUN 4 1984
MAP ROOM
ARTHUR LAKES LIBRARY
G
370
G 2
S 12
64
CO .G4
MAP