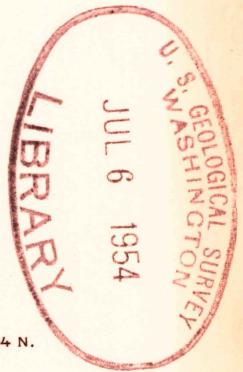
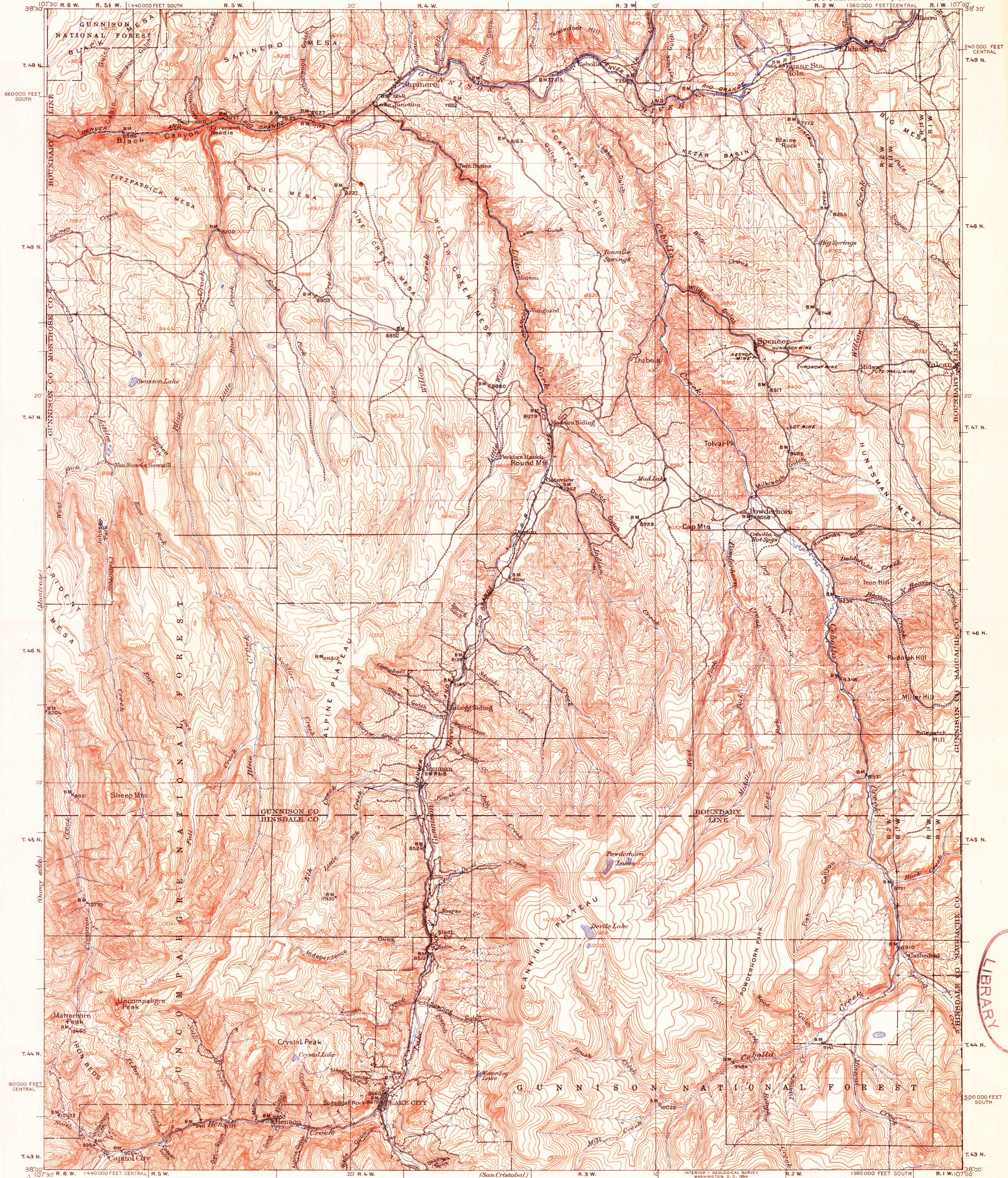
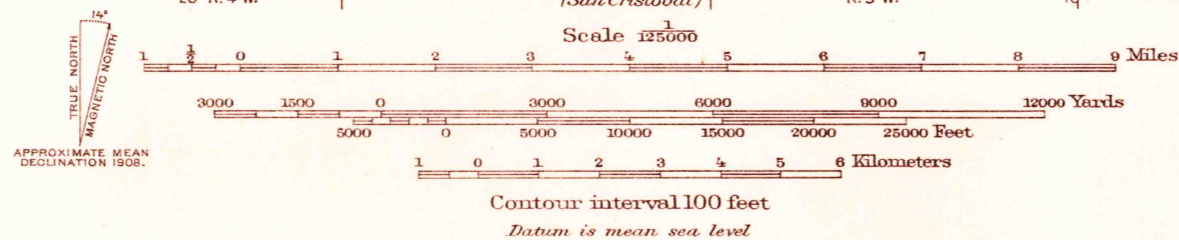


UNITED STATES
DEPARTMENT OF THE INTERIOR
GEOLOGICAL SURVEY

COLORADO
UNCOMPAGHRE QUADRANGLE
R. 2 W. 1560000 FEET CENTRAL R. 1 W. 107° 00'



80000 FEET CENTRAL
T. 43 N. 38° 00' R. 6 W. 1440000 FEET SOUTH R. 5 W.
R. B. Marshall, Chief Geographer.
E. C. Barnard, Geographer in charge.
Topography by J. F. McBeth, Gilbert Young, and S. T. Penick.
Control by Coast and Geodetic Survey, J. F. McBeth,
D. F. C. Moor, R. P. Thompson, and J. E. Chapson.
Surveyed in 1903 and 1908.



INTERIOR - GEOLOGICAL SURVEY, WASHINGTON, D. C. 2054
Polyconic projection. To place on 1927 North American datum move projection lines 50 feet north and 30 feet west
20000-foot grids based on Colorado coordinate system, central and south zones

USGS Library
Reston, VA.
Topo Archive
COLO. UNCOMPAGHRE
N3800 - W10700/30
1908

FOR SALE BY U.S. GEOLOGICAL SURVEY, FEDERAL CENTER, DENVER, COLORADO OR WASHINGTON 25, D.C.
A FOLDER DESCRIBING TOPOGRAPHIC MAPS AND SYMBOLS IS AVAILABLE ON REQUEST