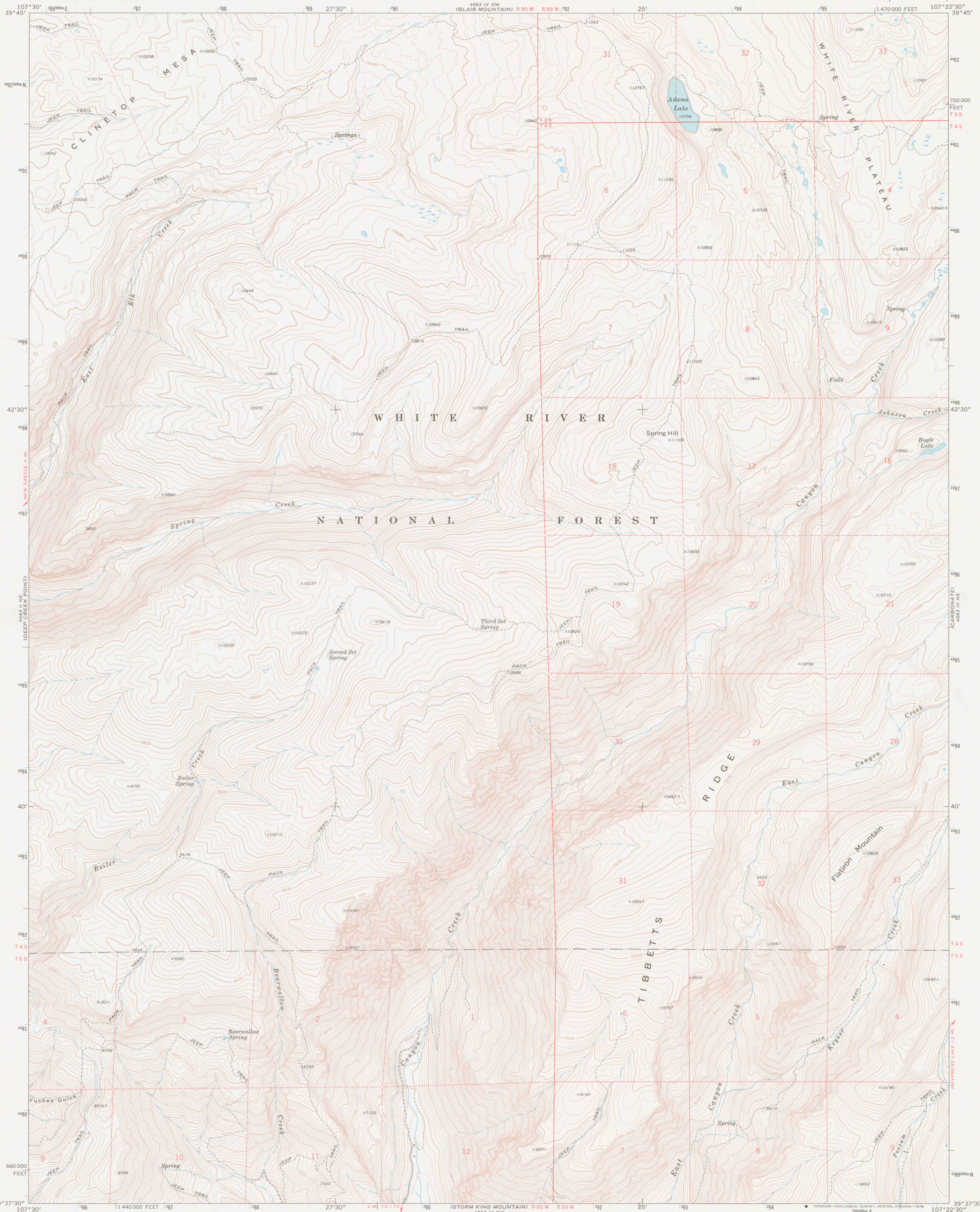


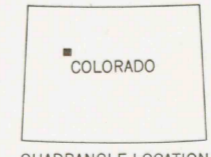
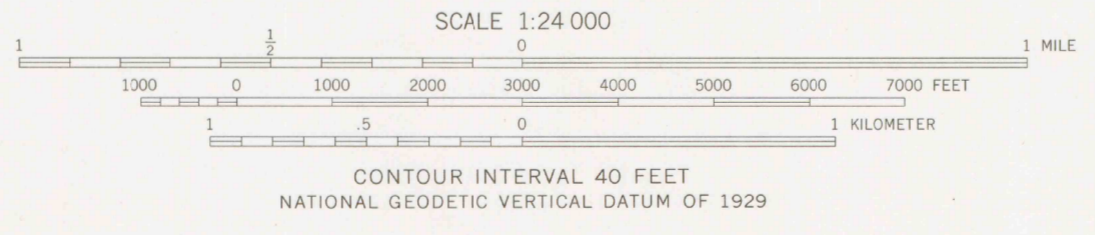
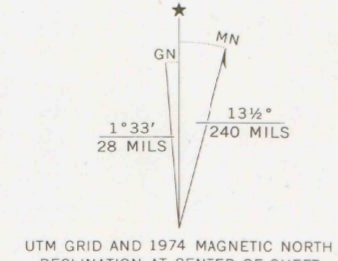
I 19.21/3: C71/A211

UNITED STATES
DEPARTMENT OF THE INTERIOR
GEOLOGICAL SURVEY

ADAMS LAKE QUADRANGLE
COLORADO—GARFIELD CO.
7.5 MINUTE SERIES (TOPOGRAPHIC)



Mapped, edited, and published by the Geological Survey
Control by USGS and NOS/NOAA
Topography by photogrammetric methods from aerial
photographs taken 1964-1965. Field checked 1974
Projection and 10,000-foot grid ticks: Colorado
coordinate system, central zone (Lambert conformal conic)
1000-meter Universal Transverse Mercator grid ticks,
zone 13, shown in blue. 1927 North American datum
Fine red dashed lines indicate selected fence lines
Where omitted, land lines have not been established
or are not shown because of insufficient data



ROAD CLASSIFICATION

Primary highway, hard surface	Light-duty road, hard or improved surface
Secondary highway, hard surface	Unimproved road
Interstate Route	U. S. Route
State Route	

WEST MISSOURI STATE UNIVERSITY LIBRARY
U. S. DEPOSITORY COPY
ADAMS LAKE, COLO.
N3937.5—W10722.5/7.5
1974
AMS 4563 III NW—SERIES Y877

APR 20 1978

OFFICE COPY
LIBRARY USE ONLY

G 3700
s24
.G4
MAP ROOM

G
4310
s24