

58° 11' N
106° 11' W
10.4 MB

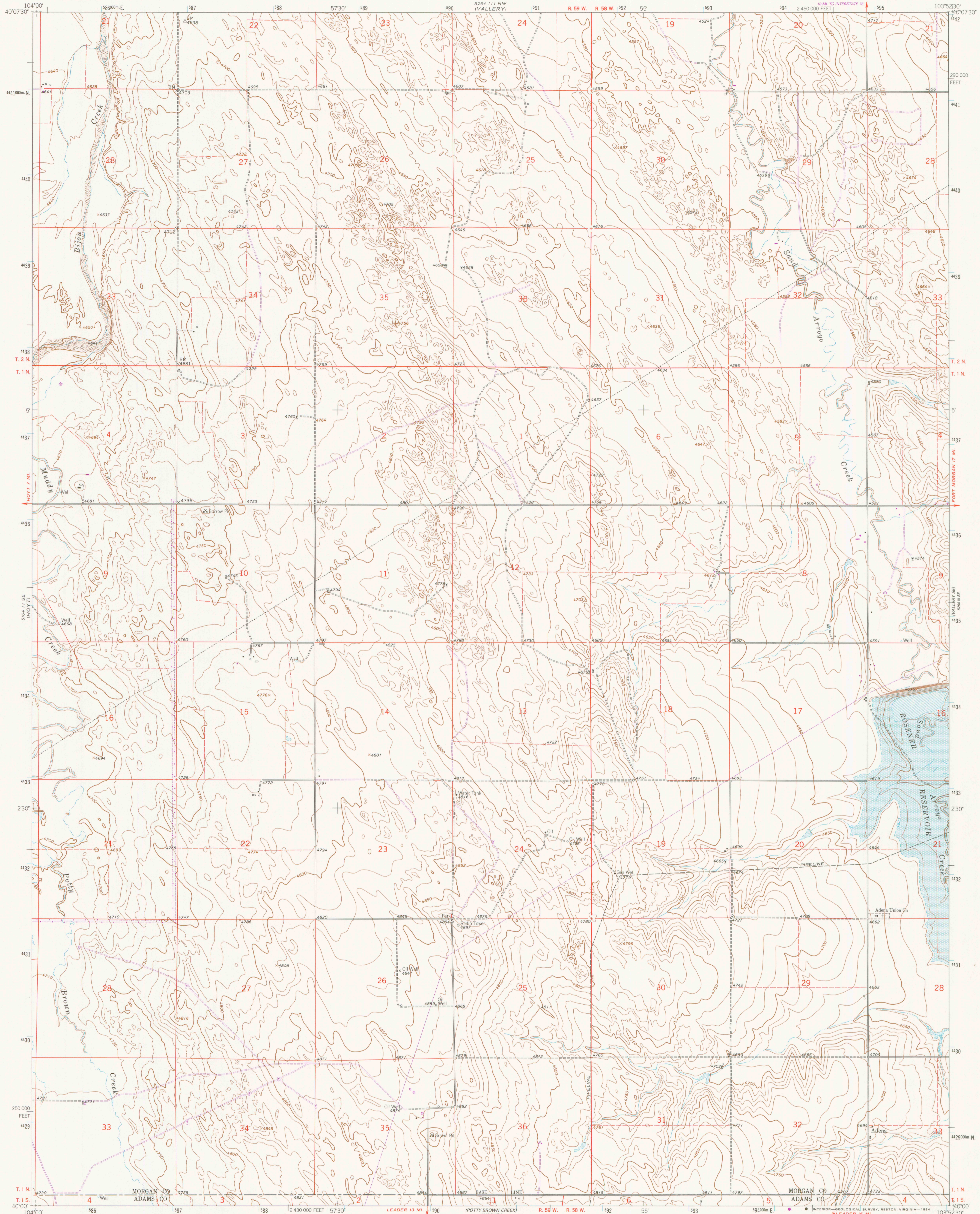
UNITED STATES
DEPARTMENT OF THE INTERIOR
GEOLOGICAL SURVEY

ADENA QUADRANGLE

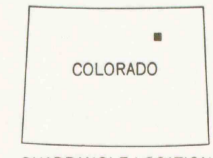
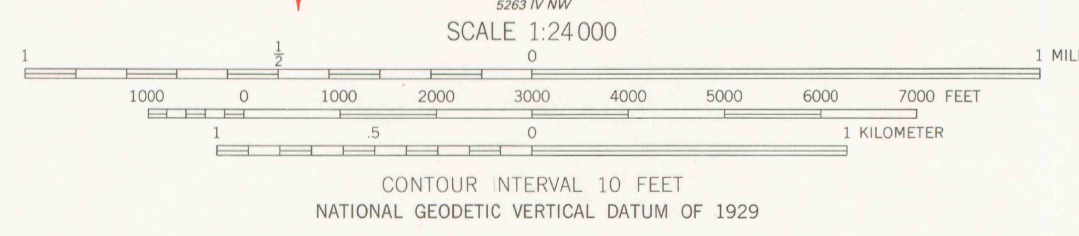
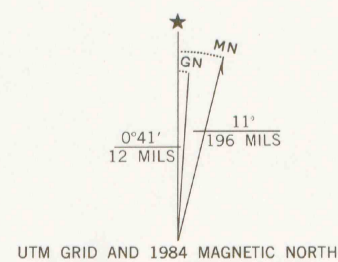
COLORADO

7.5 MINUTE SERIES (TOPOGRAPHIC)

58° 11' N
106° 11' W
10.4 MB



Mapped, edited, and published by the Geological Survey as part of the Department of the Interior program for the development of the Missouri River Basin Control by USGS and NOS/NOAA
Topography by photogrammetric methods from aerial photographs taken 1962. Field checked 1963
Polyconic projection. 10,000-foot grid ticks based on Colorado coordinate system, north zone
1000-meter Universal Transverse Mercator grid ticks, zone 13, shown in blue
1927 North American Datum
To place on the predicted North American Datum 1983 move the projection lines 5 meters north and 45 meters east as shown by dashed corner ticks
Areas covered by dashed light-blue pattern are subject to controlled inundation
Fine red dashed lines indicate selected fence lines



ROAD CLASSIFICATION
Light-duty ——— Unimproved dirt - - - - -

GEOLOGICAL SURVEY OF WYOMING

ADENA, COLO.
40103-AB-TF-024

1963
PHOTOREVISED 1984
DMA 5264 III SW - SERIES V877

THIS MAP COMPLIES WITH NATIONAL MAP ACCURACY STANDARDS
FOR SALE BY U. S. GEOLOGICAL SURVEY, DENVER, COLORADO 80225, OR RESTON, VIRGINIA 22092
A FOLDER DESCRIBING TOPOGRAPHIC MAPS AND SYMBOLS IS AVAILABLE ON REQUEST

Revisions shown in purple and woodland compiled from aerial photographs taken 1982 and other sources
This information not field checked. Map edited 1984

LIBRARY DOCUMENT COLLECTION
SEP 18 1985
UNIVERSITY OF WYOMING
LARAMIE

copy 2