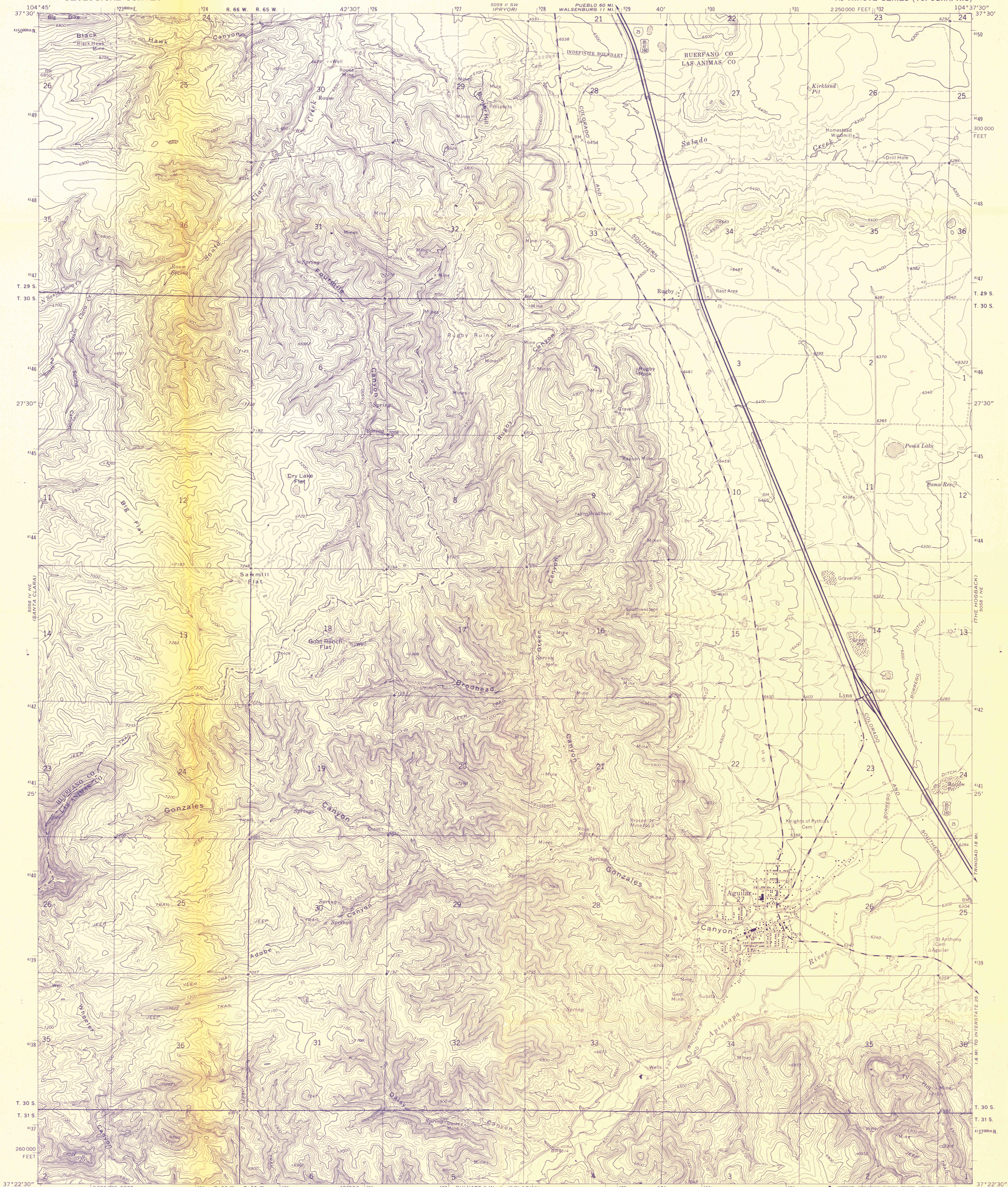


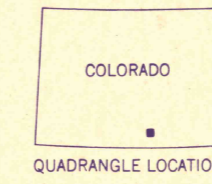
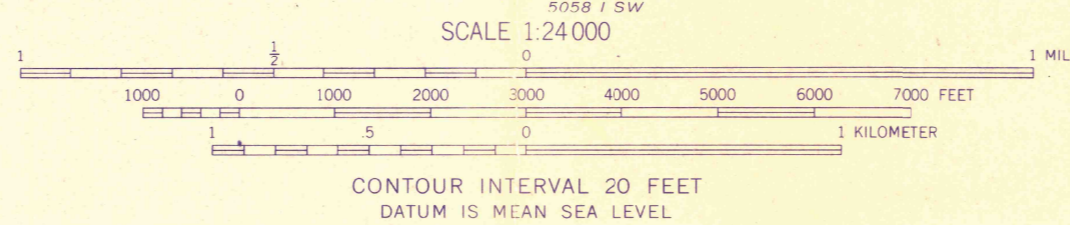
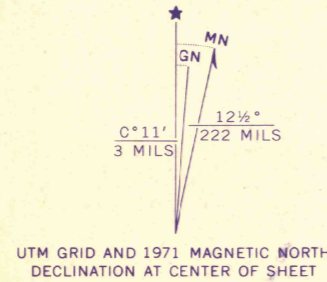
UNITED STATES
DEPARTMENT OF THE INTERIOR
GEOLOGICAL SURVEY

ADVANCE PROOF
SUBJECT TO CORRECTION
SCALE 1:24,000
F

AGUILAR QUADRANGLE
COLORADO
7.5 MINUTE SERIES (TOPOGRAPHIC)



Mapped, edited, and published by the Geological Survey
Control by USGS and USC&GS
Topography by photogrammetric methods from aerial
photographs taken 1970. Field checked 1971
Projection and 10,000-foot grid ticks: Colorado
coordinate system, south zone (Lambert conformal conic)
1000-meter Universal Transverse Mercator grid ticks,
zone 13, shown in blue. 1927 North American datum
Fine red dashed lines indicate selected fence lines



ROAD CLASSIFICATION

Primary highway, hard surface
Secondary highway, hard surface
Unimproved road
Light-duty road, hard or improved surface

Interstate Route U.S. Route State Route

THIS MAP COMPLIES WITH NATIONAL MAP ACCURACY STANDARDS
FOR SALE BY U.S. GEOLOGICAL SURVEY, DENVER, COLORADO 80225, OR RESTON, VIRGINIA 22092
A FOLDER DESCRIBING TOPOGRAPHIC MAPS AND SYMBOLS IS AVAILABLE ON REQUEST

AGUILAR, COLO.
N3722.5-W10437.5/7.5
1971
AMS 5058 I NW-SERIES V877

NOTE

This map was prepared as part of the U.S. Geological Survey's program for completing the topographic mapping of the United States. We wish to have the maps available for general distribution with the minimum of error. These proofs are sent for your review and comment. Please sign and return your marked copy within 10 days to address shown. If no comments, both copies may be retained for your use. Additional prints of this map are available at 75¢ each from the address shown.

CHIEF,
ROCKY MOUNTAIN MAPPING CENTER
U.S. GEOLOGICAL SURVEY
BLDG. 25, FEDERAL CENTER
DENVER, COLORADO 80225

SIGNATURE _____
TITLE _____
ADDRESS _____