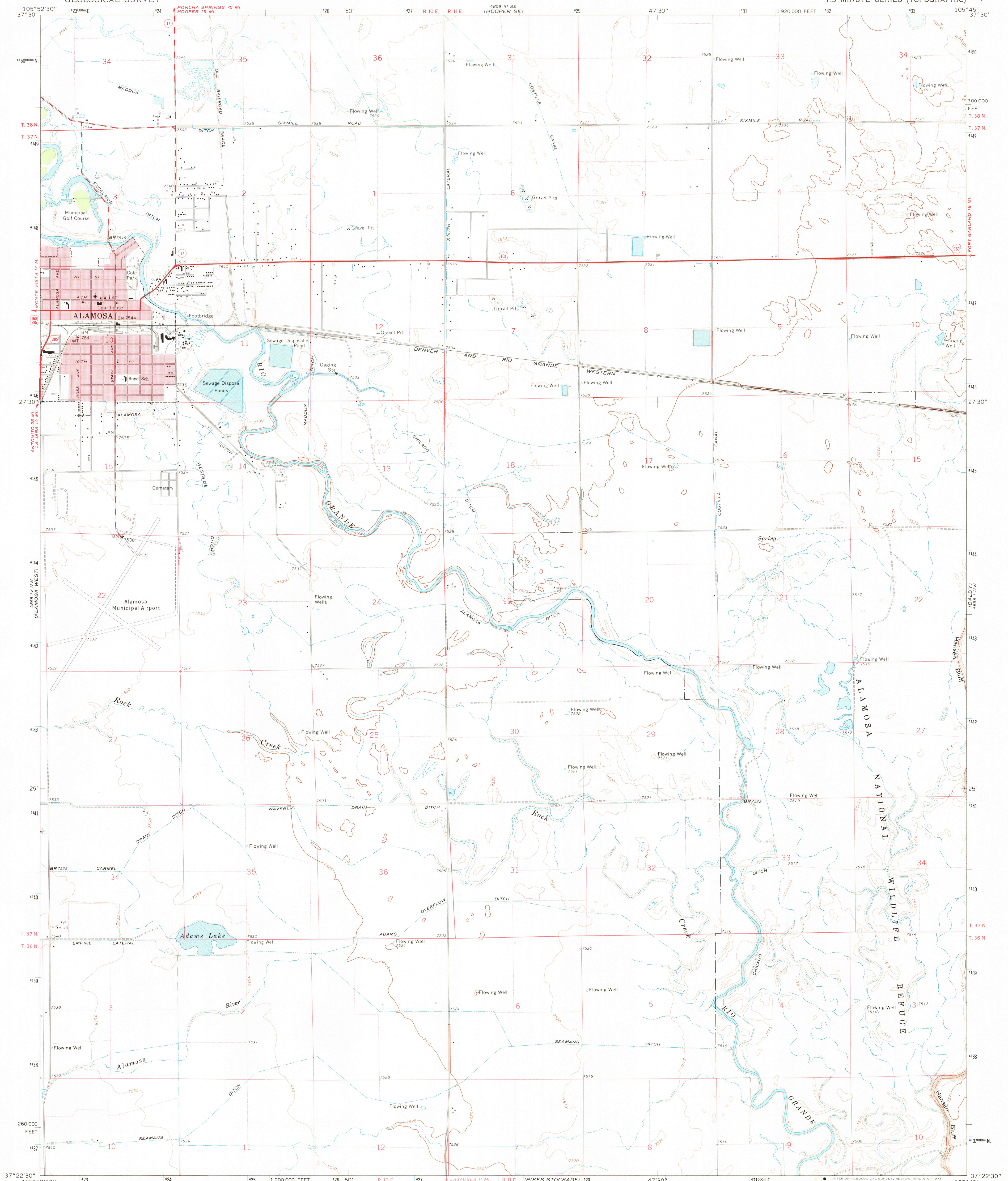
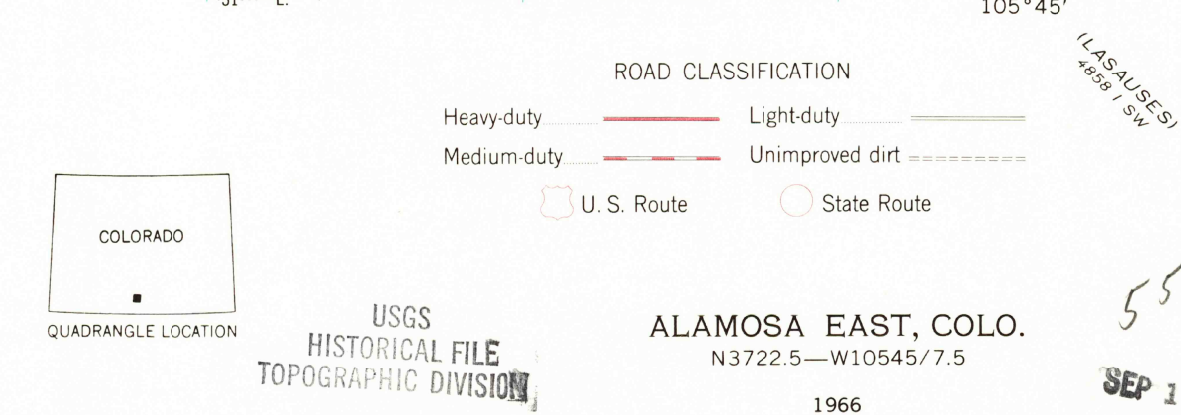
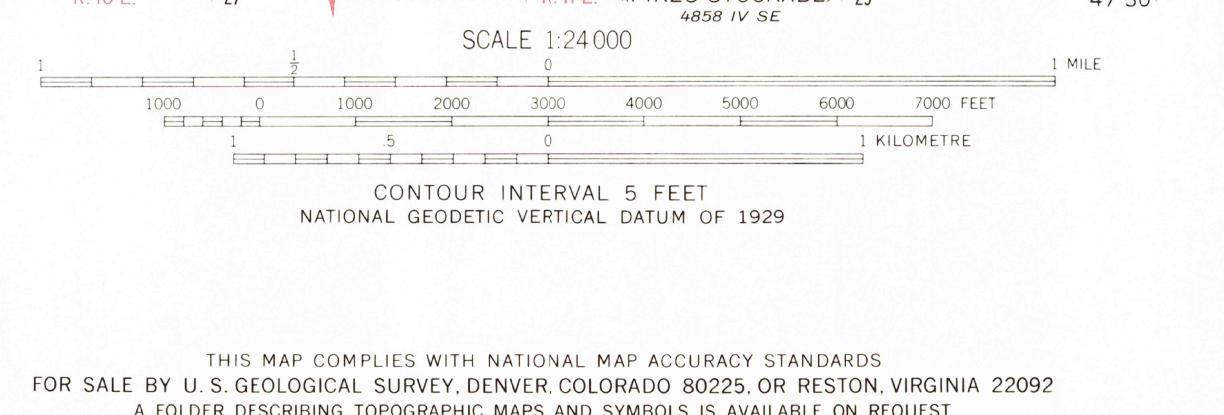
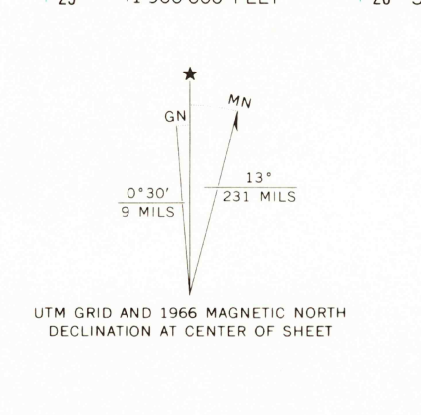


UNITED STATES  
DEPARTMENT OF THE INTERIOR  
GEOLOGICAL SURVEY

ALAMOSA EAST QUADRANGLE  
COLORADO—ALAMOSA CO.  
7.5 MINUTE SERIES (TOPOGRAPHIC)



Maped, edited, and published by the Geological Survey  
in cooperation with State of Colorado agencies  
Control by USGS and USC&GS  
Planimetry by photogrammetric methods from aerial photographs  
taken 1960. Topography by planetable surveys 1966  
Polyconic projection. 1927 North American datum  
10,000-foot grid based on Colorado coordinate system,  
south zone  
1000-metre Universal Transverse Mercator grid ticks,  
zone 13, shown in blue  
Red tint indicates areas in which only landmark buildings are shown  
Fine red dashed lines indicate selected fence lines



ALAMOSA EAST, COLO.  
N3722.5—W10545.7.5  
1966  
AMS 4858 IV NE—SERIES V877