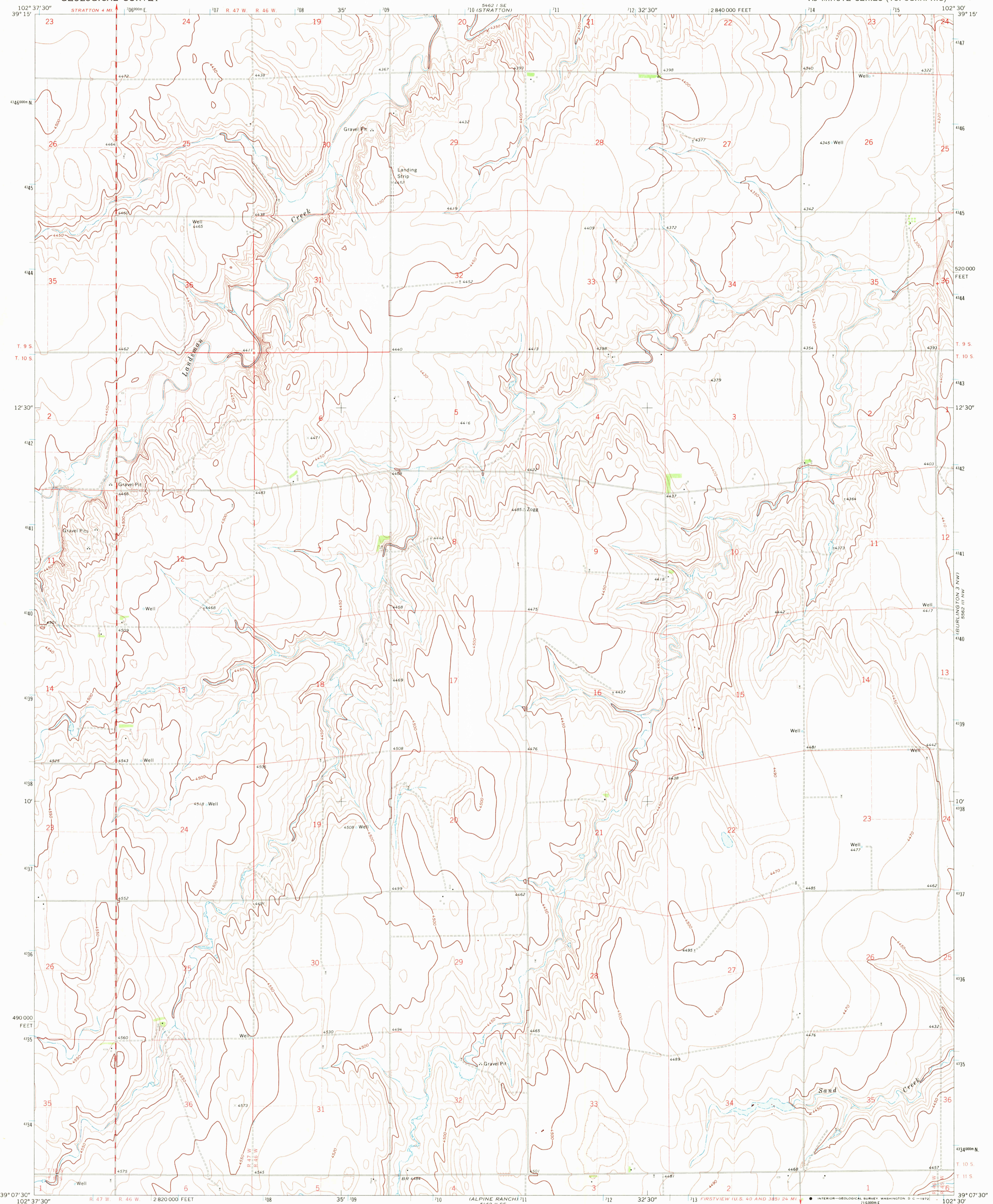


5662 II NE
(BETHUNE)

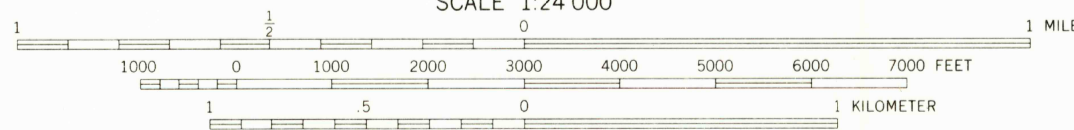
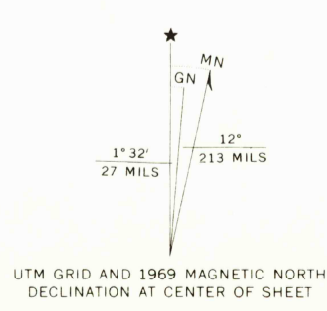


Mapped, edited, and published by the Geological Survey
Control by USGS and USC&GS

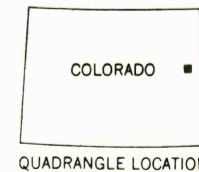
Topography by photogrammetric methods from aerial
photographs taken 1968. Field checked 1969

Polyconic projection. 1927 North American datum
10,000-foot grid based on Colorado coordinate system
central zone
1000-meter Universal Transverse Mercator grid ticks,
zone 13, shown in blue

Fine red dashed lines indicate selected fence lines
Land lines, in part, are based on cultural development
and are not reflected in the original land survey



CONTOUR INTERVAL 10 FEET
DATUM IS MEAN SEA LEVEL



ROAD CLASSIFICATION
Secondary highway, all weather, improved surface
Light-duty road, all weather, improved surface
Unimproved road, fair or dry weather

MAY 11 1972

THIS MAP COMPLIES WITH NATIONAL MAP ACCURACY STANDARDS
FOR SALE BY U.S. GEOLOGICAL SURVEY, DENVER, COLORADO 80225 OR WASHINGTON, D.C. 20242
A FOLDER DESCRIBING TOPOGRAPHIC MAPS AND SYMBOLS IS AVAILABLE ON REQUEST

USGS
HISTORICAL FILE
TOPOGRAPHIC DIVISION

ALPINE RANCH NE, COLO.
N3907.5—W10230/7.5
1969

AMS 5462 II NE—SERIES V877

2660