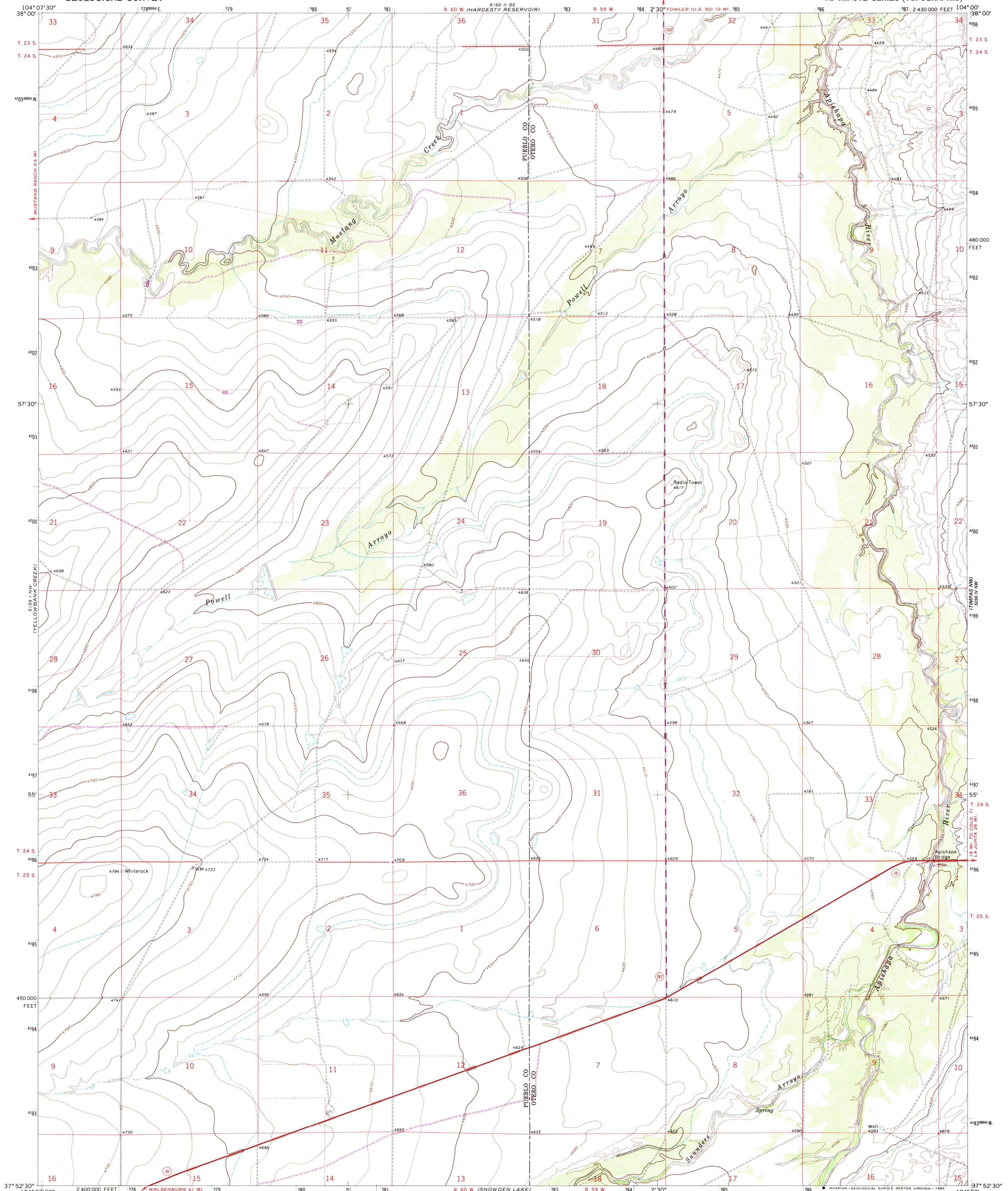


UNITED STATES  
DEPARTMENT OF THE INTERIOR  
GEOLOGICAL SURVEY

APISHAPA BRIDGE QUADRANGLE  
COLORADO  
7.5 MINUTE SERIES (TOPOGRAPHIC)



Mapped, edited, and published by the Geological Survey  
Control by USGS and NOS/NOAA  
Topography by photogrammetric methods from aerial photographs taken 1969. Field checked 1970  
Projection and 10,000-foot grid ticks: Colorado coordinate system, south zone (Lambert conformal conic) 1000-meter Universal Transverse Mercator grid ticks, zone 13, shown in blue. 1927 North American Datum  
Fine red dashed lines indicate selected fence lines  
To place on the predicted North American Datum 1983 move the projection lines 3 meters north and 45 meters east as shown by dashed corner ticks  
Revisions shown in purple and woodland compiled from aerial photographs taken 1983 and other source data. This information not field checked. Map edited 1984

SCALE 1:24,000  
CONTOUR INTERVAL 10 FEET  
NATIONAL GEODETIC VERTICAL DATUM OF 1929

ROAD CLASSIFICATION  
Primary highway, hard surface ——— Light-duty road, hard or improved surface ———  
Secondary highway, hard surface ——— Unimproved road ———  
○ Interstate Route ○ U. S. Route ○ State Route

UTM GRID AND 1984 MAGNETIC NORTH DECLINATION AT CENTER OF SHEET  
11° 19' 10" N  
0° 35' 10" W

COLORADO  
QUADRANGLE LOCATION

APISHAPA BRIDGE, COLO.  
37104-H1-TF-024  
1970  
PHOTOREVISED 1984  
DMA 5159 1 NE—SERIES V877

THIS MAP COMPLIES WITH NATIONAL MAP ACCURACY STANDARDS  
FOR SALE BY U. S. GEOLOGICAL SURVEY, DENVER, COLORADO 80225, OR RESTON, VIRGINIA 22092  
A FOLDER DESCRIBING TOPOGRAPHIC MAPS AND SYMBOLS IS AVAILABLE ON REQUEST