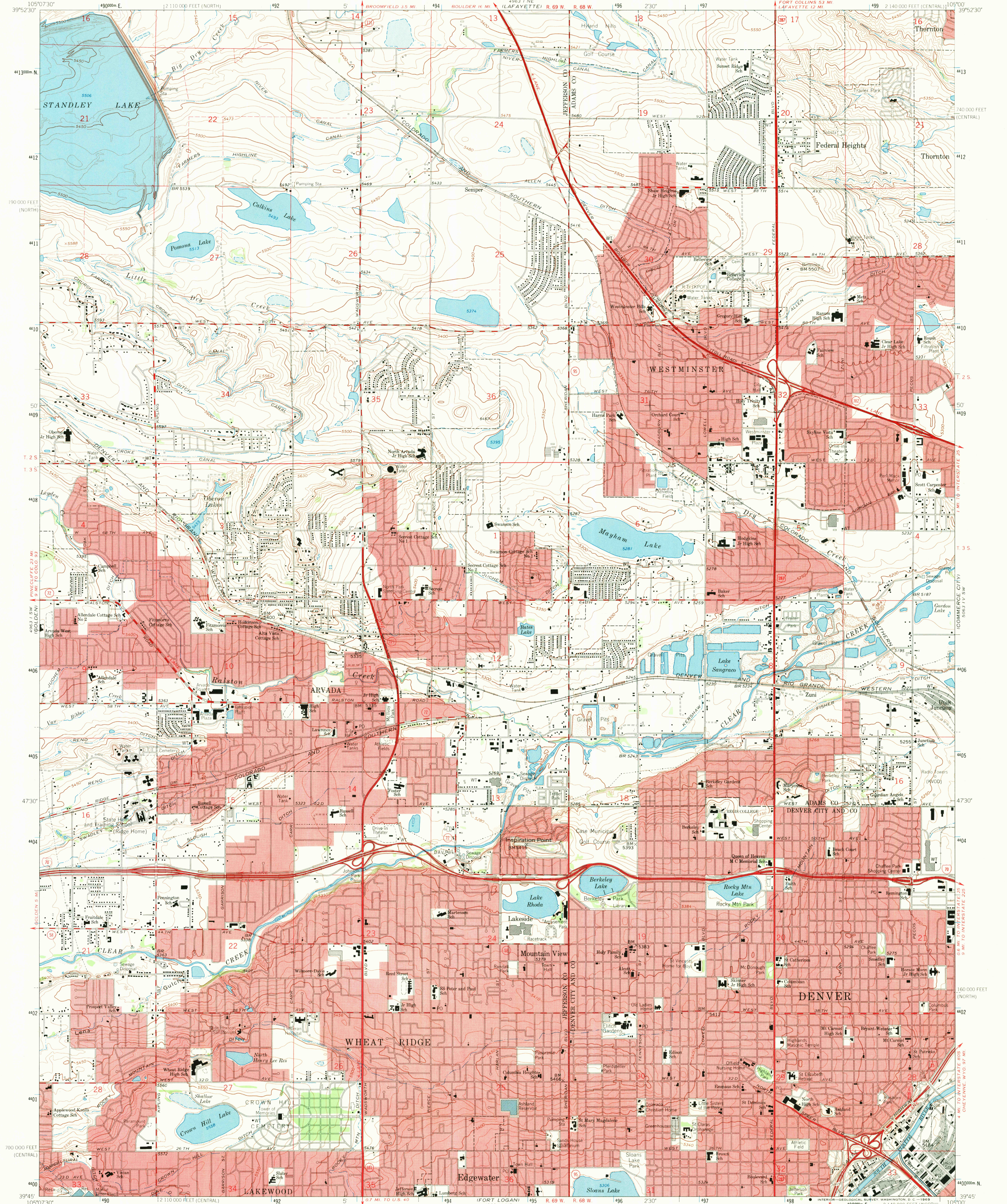


UNITED STATES  
DEPARTMENT OF THE INTERIOR  
GEOLOGICAL SURVEY

ARVADA QUADRANGLE  
COLORADO  
7.5 MINUTE SERIES (TOPOGRAPHIC)



Mapped, edited, and published by the Geological Survey

Control by USGS and USC&GS

Topography by photogrammetric methods from aerial photographs  
taken 1964. Field checked 1965. Supersedes map dated 1957

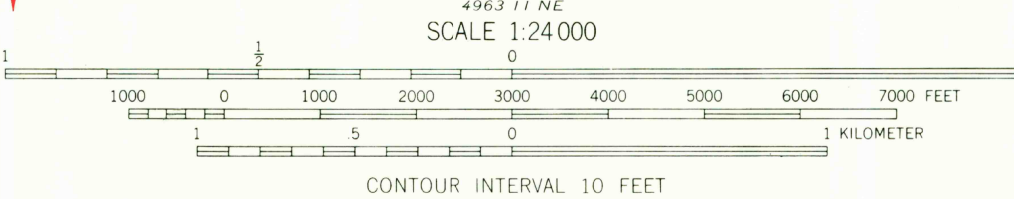
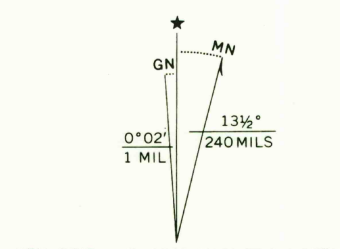
Polycyclic projection. 1927 North American datum  
10,000-foot grids based on Colorado coordinate system, central  
and north zones

1000-meter Universal Transverse Mercator grid ticks,  
zone 13, shown in blue

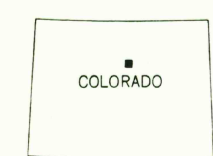
Red tint indicates areas in which only landmark buildings are shown

Fine red dashed lines indicate selected fence lines

This map does not reflect ground conditions  
resulting from flood of June 1965



USGS  
Historical File  
Topographic Division



ROAD CLASSIFICATION  
Heavy-duty ——— Light-duty ———  
Medium-duty ——— Unimproved dirt ———  
Interstate Route U.S. Route State Route

U.S.G.S.  
FILE COPY ARVADA, COLO.  
TOPOGRAPHIC DIVISION N3945-W10500/7.5  
1965

AMS 4963 1 SE-SERIES V877

THIS MAP COMPLIES WITH NATIONAL MAP ACCURACY STANDARDS  
FOR SALE BY U.S. GEOLOGICAL SURVEY, DENVER, COLORADO 80225, OR WASHINGTON, D.C. 20242  
A FOLDER DESCRIBING TOPOGRAPHIC MAPS AND SYMBOLS IS AVAILABLE ON REQUEST

APR 9 1969  
13 380