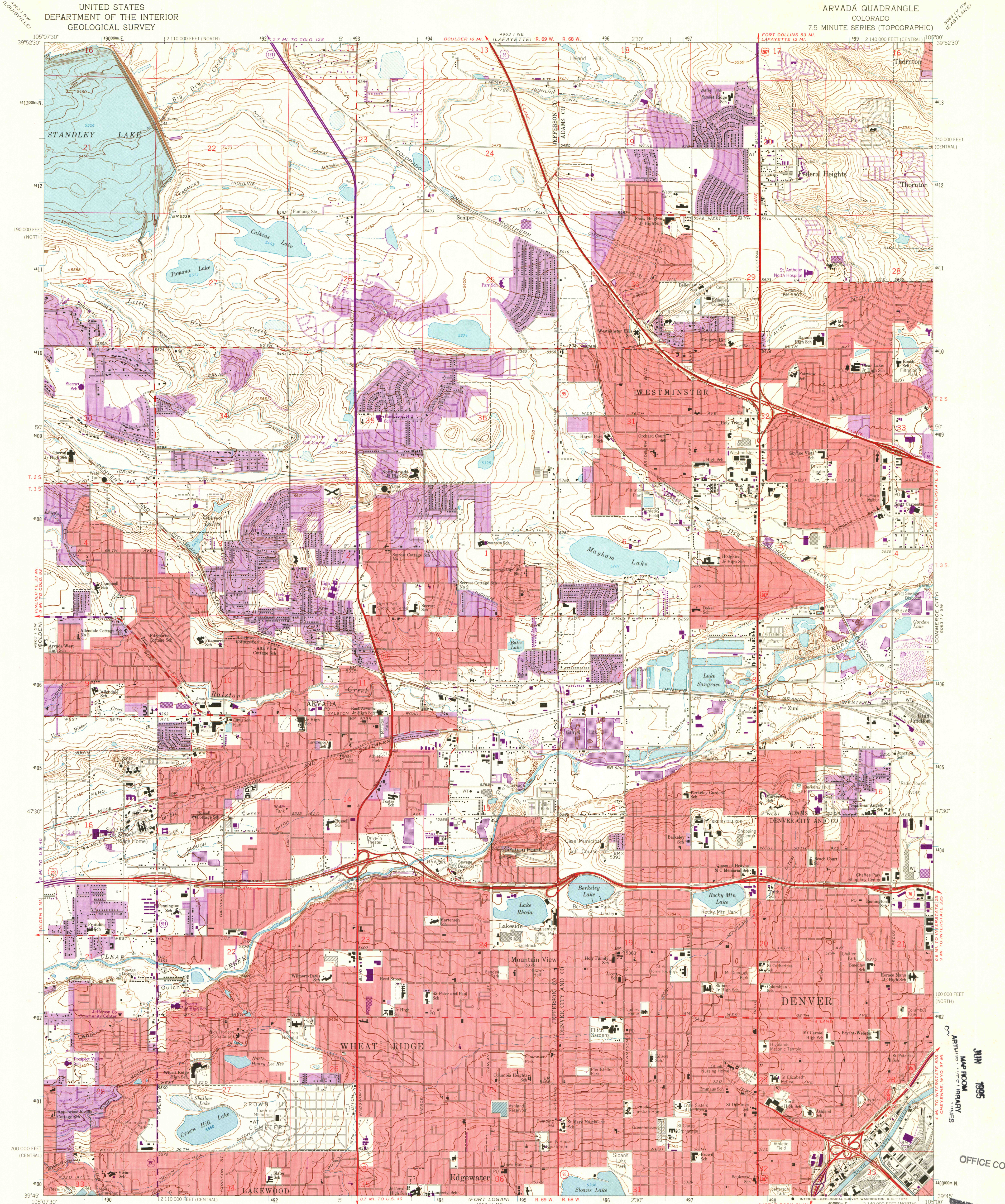
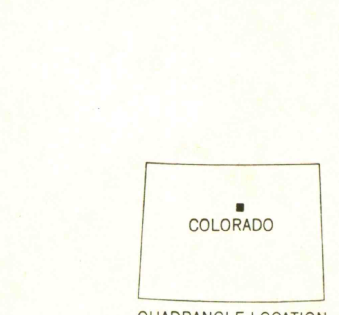
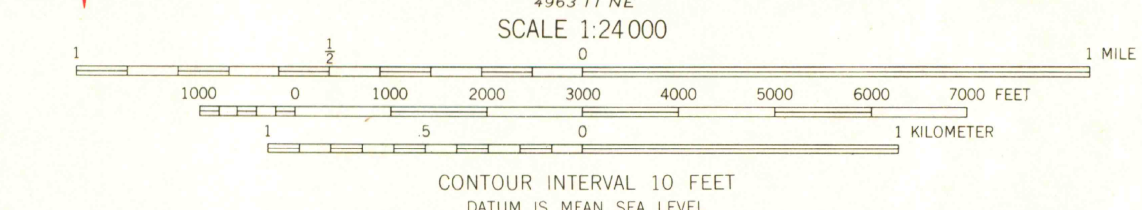
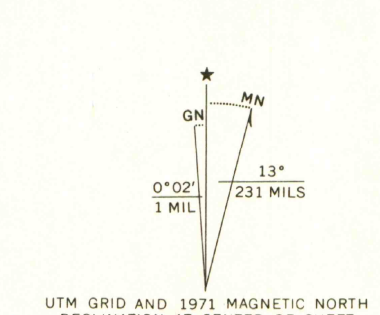


UNITED STATES
DEPARTMENT OF THE INTERIOR
GEOLOGICAL SURVEY

ARVADA QUADRANGLE
COLORADO
7.5 MINUTE SERIES (TOPOGRAPHIC)



Mapped, edited, and published by the Geological Survey
Control by USGS and USC&GS
Topography by photogrammetric methods from aerial photographs
taken 1964. Field checked 1965. Supersedes map dated 1957
Polyconic projection. 1927 North American datum
10,000-foot grids based on Colorado coordinate system, central
and north zones
1000-meter Universal Transverse Mercator grid ticks,
zone 13, shown in blue
Red tint indicates areas in which only landmark buildings are shown
Fine red dashed lines indicate selected fence lines
Revisions shown in purple compiled from aerial photographs
taken 1971. This information not field checked
Purple tint indicates extension of urban areas



ROAD CLASSIFICATION
Heavy-duty ——— Light-duty ———
Medium-duty ——— Unimproved dirt ———
Interstate Route U.S. Route State Route
ARVADA, COLO.
N3945-110500/7.5
1965
PHOTOREVISED 1971
AMS 4963, 1 SE-SERIES V877

OFFICE COPY
JUN 1995
MAP ROOM
ARTIFICIAL INK
REPRODUCTION
USE ONLY
G 3701
C222
S24
U5
168002624262