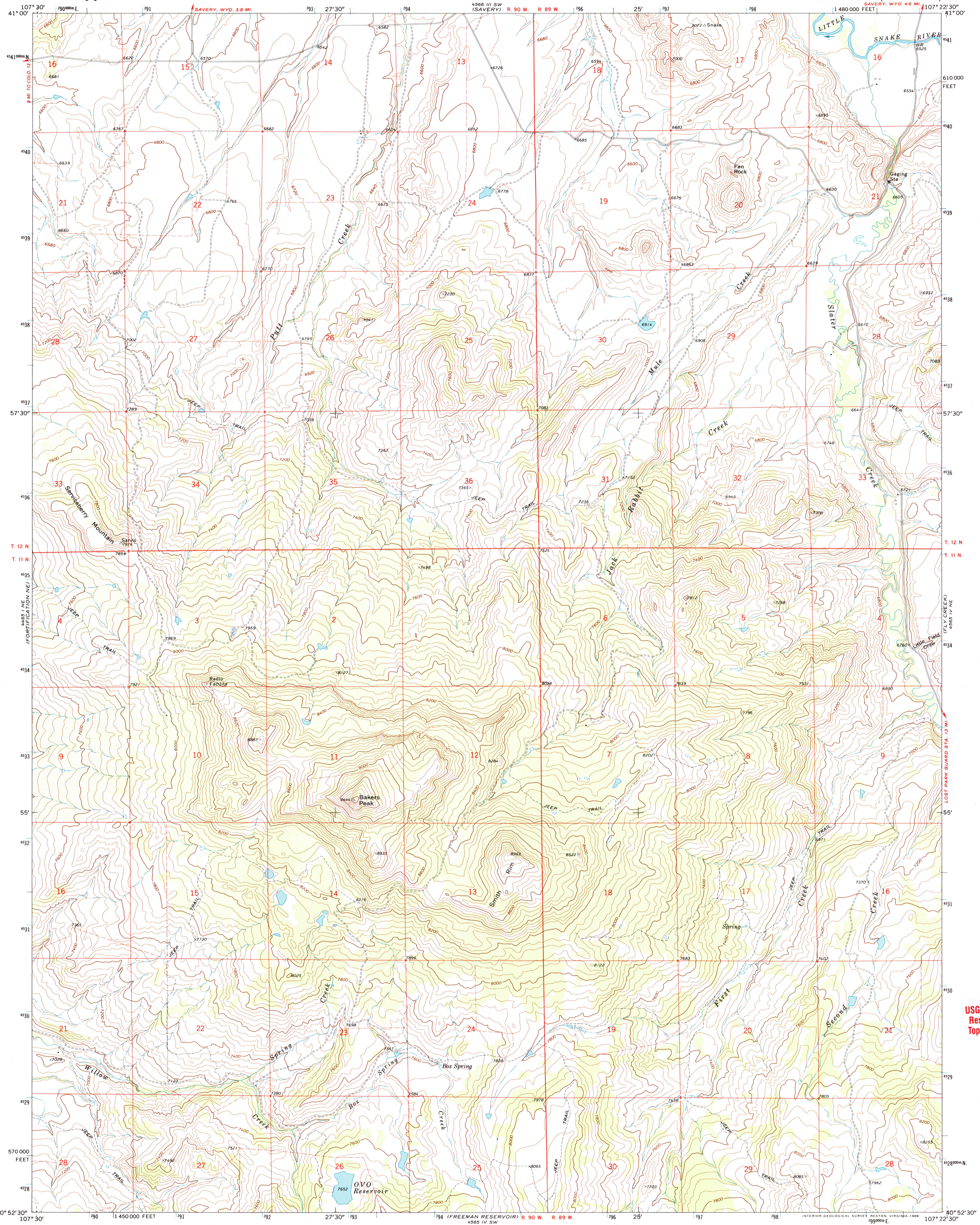


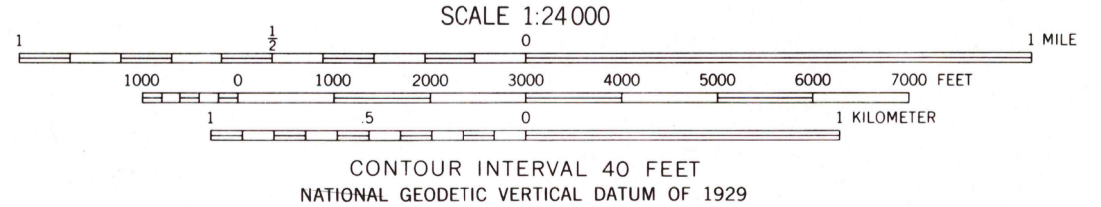
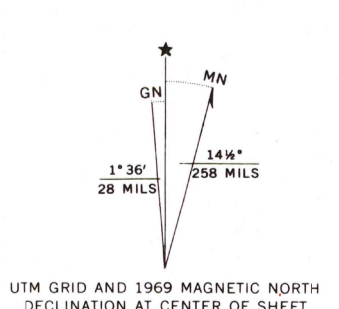


U.S. DEPARTMENT OF THE INTERIOR
U.S. GEOLOGICAL SURVEY

BAKERS PEAK QUADRANGLE
COLORADO—MOFFAT CO.
7.5 MINUTE SERIES (TOPOGRAPHIC)



Mapped, edited, and published by the Geological Survey
Control by USGS and USC&GS
Topography by photogrammetric methods from aerial
photographs taken 1968. Field checked 1969
Polyconic projection. 1927 North American Datum
10,000-foot grid based on Colorado coordinate system,
north zone
1000-meter Universal Transverse Mercator grid ticks,
zone 13, shown in blue
Fine red dashed lines indicate selected fence lines
To place on the predicted North American Datum 1983
move the projection lines 7 meters north and
53 meters east as shown by dashed corner ticks
Map photinspected 1973
No major culture or drainage changes observed



ROAD CLASSIFICATION
Light-duty road, all weather, Unimproved road, fair or dry
improved surface weather

JUN 30 2004

BAKERS PEAK, COLO.
40107-H4-TF-024

THIS MAP COMPLIES WITH NATIONAL MAP ACCURACY STANDARDS
FOR SALE BY U.S. GEOLOGICAL SURVEY, P.O. BOX 25286, DENVER, COLORADO 80225
A FOLDER DESCRIBING TOPOGRAPHIC MAPS AND SYMBOLS IS AVAILABLE ON REQUEST

1969
PHOTOINSPECTED 1973
DMA 4565 IV NW-SERIES V877

USGS Library
Reston, VA
Topo Archive

BUCK POINT
ISBN 0-607-11261-5
91780607112818
3 1818 00418492 3