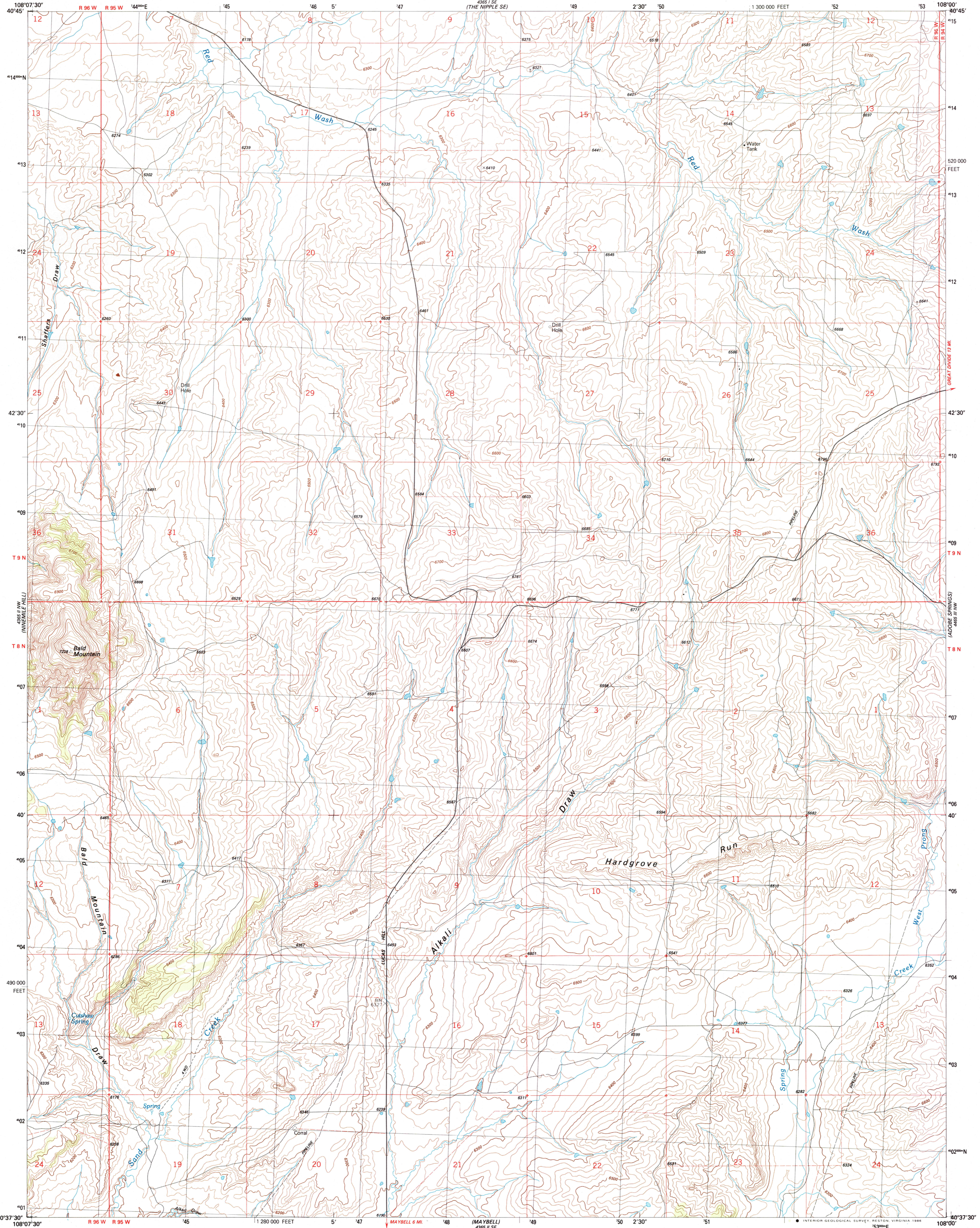
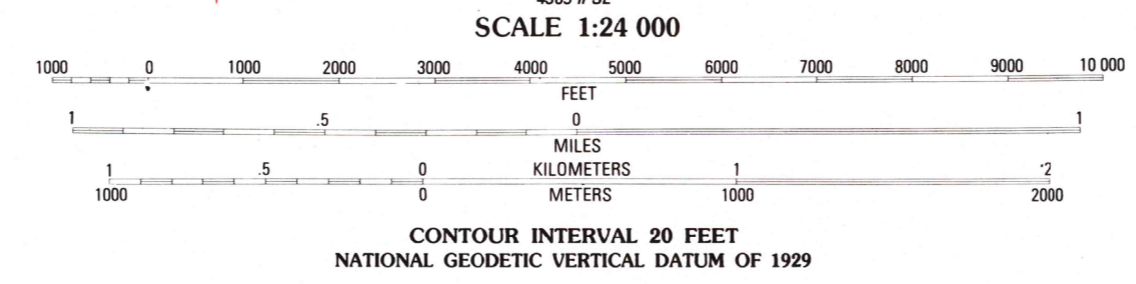
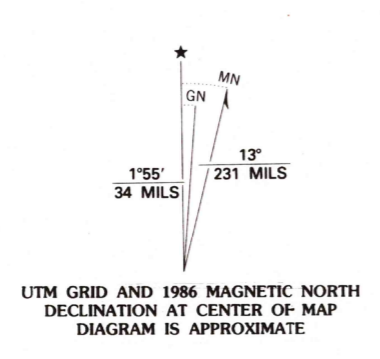


UNITED STATES  
DEPARTMENT OF THE INTERIOR  
GEOLOGICAL SURVEY

BALD MOUNTAIN QUADRANGLE  
COLORADO—MOFFAT CO.  
7.5 MINUTE SERIES (TOPOGRAPHIC)  
NE 4 MAYBELL 15' QUADRANGLE



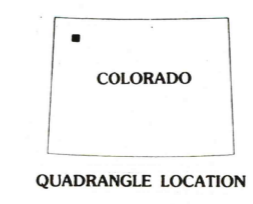
Produced by the United States Geological Survey  
Control by USGS and NOS/NOAA  
Compiled by photogrammetric methods from aerial photographs taken 1981. Field checked 1982. Map edited 1986  
Projection and 10,000-foot grid ticks: Colorado coordinate system, north zone (Lambert conformal conic)  
1000-meter Universal Transverse Mercator grid, zone 12  
1927 North American Datum  
To place on the predicted North American Datum 1983 move the projection lines 7 meters north and 54 meters east as shown by dashed corner ticks  
Fine red dashed lines indicate selected fence and field lines generally visible on aerial photographs. This information is unchecked



CONTOUR INTERVAL 20 FEET  
NATIONAL GEODETIC VERTICAL DATUM OF 1929

THIS MAP COMPLIES WITH NATIONAL MAP ACCURACY STANDARDS  
FOR SALE BY U. S. GEOLOGICAL SURVEY, DENVER, COLORADO 80225, OR RESTON, VIRGINIA 22092  
A FOLDER DESCRIBING TOPOGRAPHIC MAPS AND SYMBOLS IS AVAILABLE ON REQUEST

**ROAD CLASSIFICATION**  
Primary highway, hard surface . . . . .  
Secondary highway, hard surface . . . . .  
Light-duty road, hard or improved surface . . . . .  
Unimproved road . . . . .  
Interstate Route U. S. Route State Route



**BALD MOUNTAIN, COLO.**  
NE 4 MAYBELL 15' QUADRANGLE  
40108-F1-TF-024

1986

DMA 4365 II NE-SERIES V877

