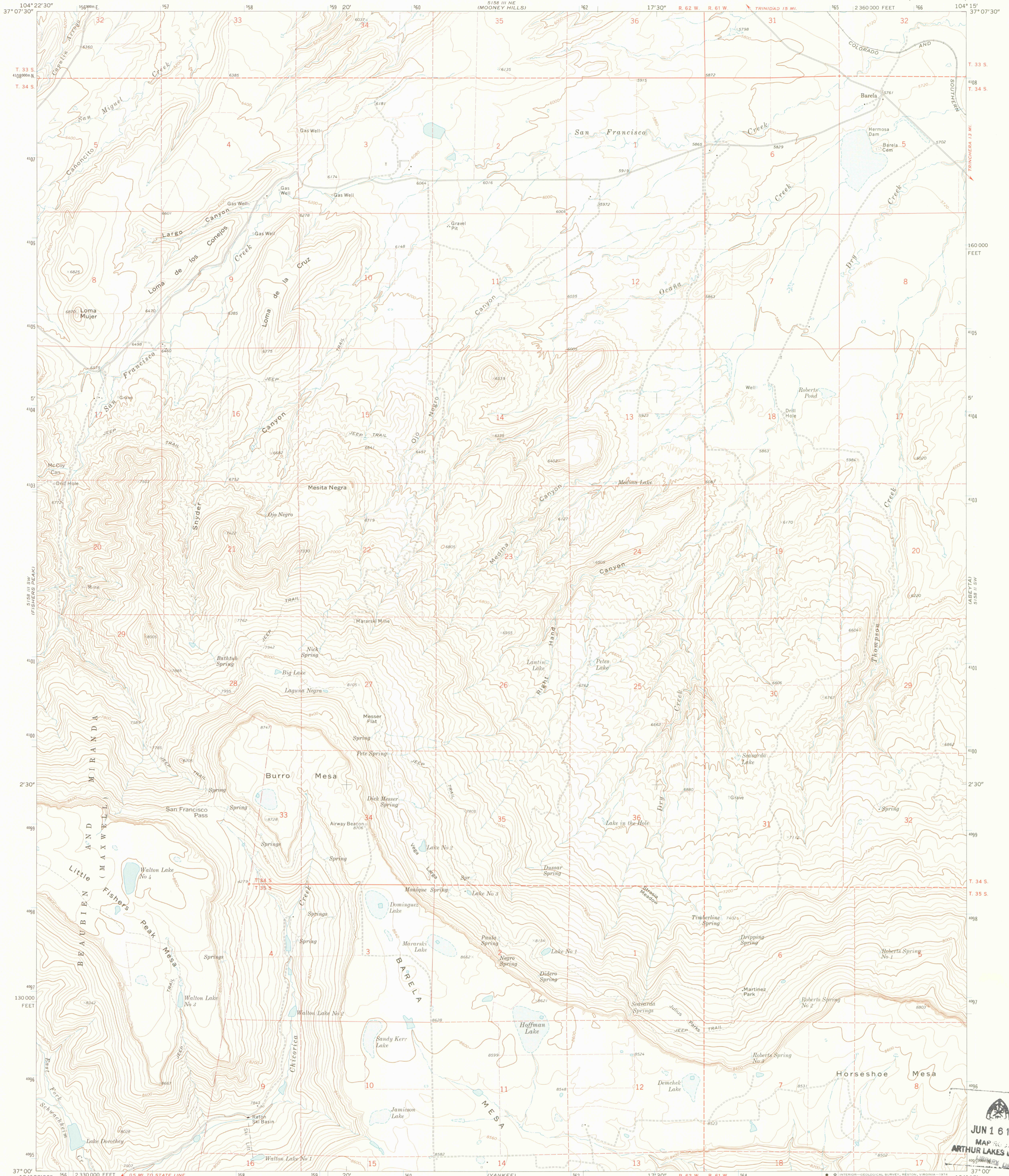


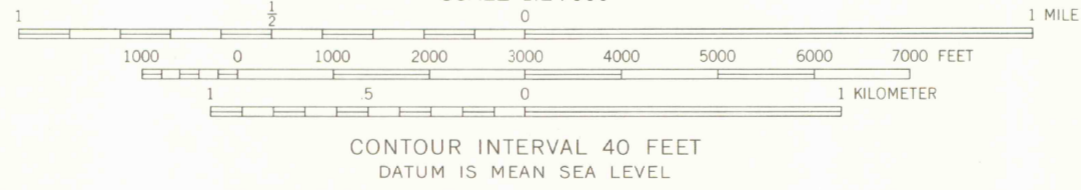
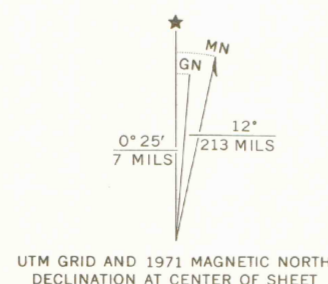
UNITED STATES
DEPARTMENT OF THE INTERIOR
GEOLOGICAL SURVEY

BARELA QUADRANGLE
COLORADO—LAS ANIMAS CO.
7.5 MINUTE SERIES (TOPOGRAPHIC)



Mapped, edited, and published by the Geological Survey

Control by USGS and USC&GS
Topography by photogrammetric methods from aerial photographs taken 1969. Field checked 1971
Projection and 10,000-foot grid ticks: Colorado coordinate system, south zone (transverse Mercator) 1000-meter Universal Transverse Mercator grid ticks, zone 13, shown in blue. 1927 North American datum
Where omitted, land lines have not been established
Fine red dashed lines indicate selected fence lines



CONTOUR INTERVAL 40 FEET
DATUM IS MEAN SEA LEVEL



ROAD CLASSIFICATION

Primary highway, hard surface	Light-duty road, hard or improved surface
Secondary highway, hard surface	Unimproved road
Interstate Route	U. S. Route
	State Route

THIS MAP COMPLIES WITH NATIONAL MAP ACCURACY STANDARDS
FOR SALE BY U.S. GEOLOGICAL SURVEY, DENVER, COLORADO 80225, OR RESTON, VIRGINIA 22092
A FOLDER DESCRIBING TOPOGRAPHIC MAPS AND SYMBOLS IS AVAILABLE ON REQUEST

BARELA, COLO.
N3700—W10415/7.5

1971

AMS 5158 III SE—SERIES 5877



JUN 16 1989

MAP ARTHUR LAKES LIBRARY

OFFICE COPY

G 3701
G 3702
G 3703
G 3704
G 3705