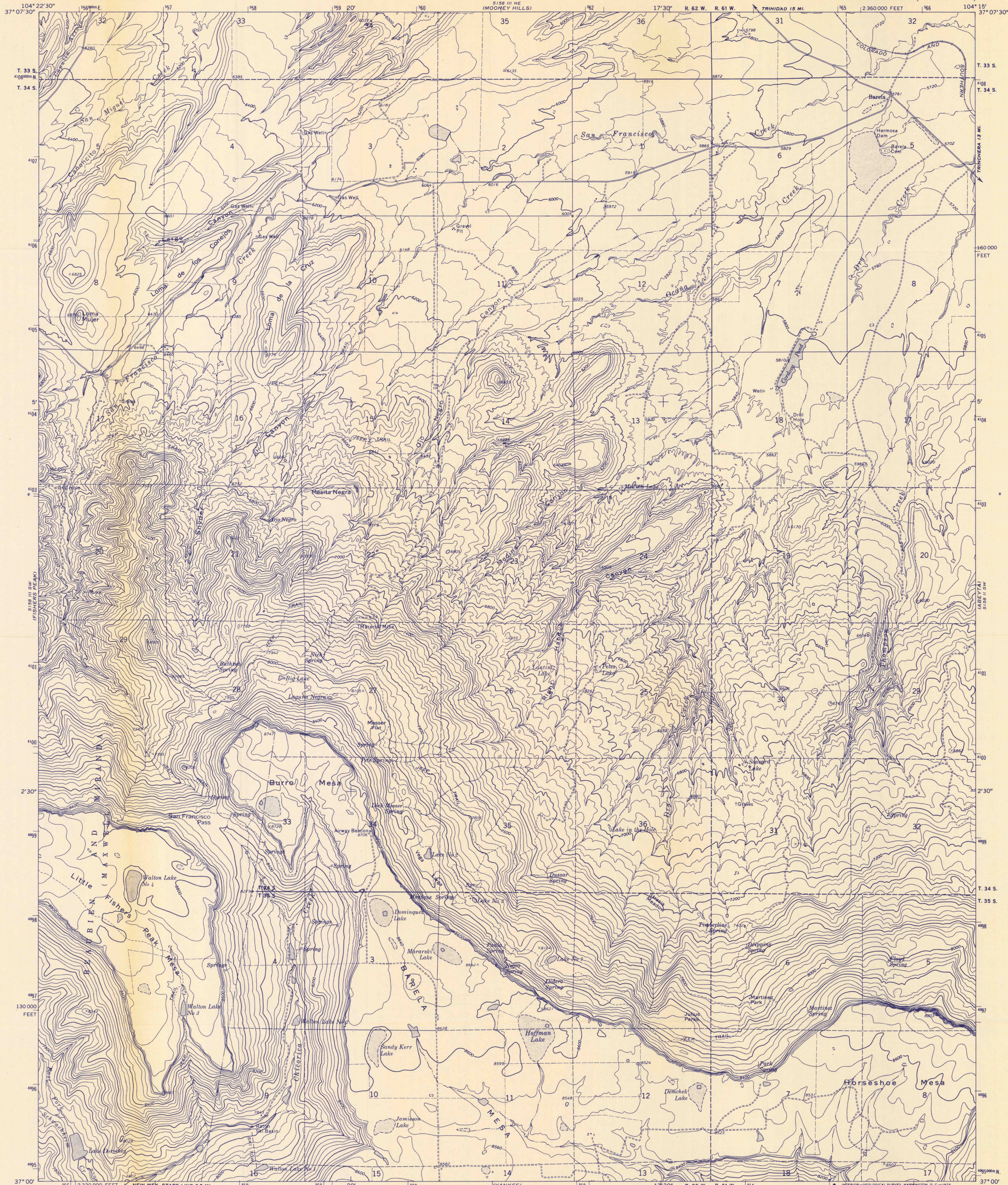


UNITED STATES  
DEPARTMENT OF THE INTERIOR  
GEOLOGICAL SURVEY

ADVANCE PROOF  
SUBJECT TO CORRECTION  
SCALE 1:24,000  
F

BARELA QUADRANGLE  
COLORADO—LAS ANIMAS CO.  
7.5 MINUTE SERIES (TOPOGRAPHIC)

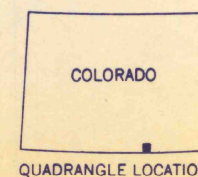
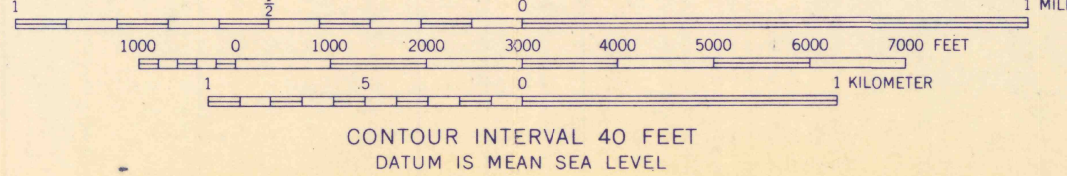
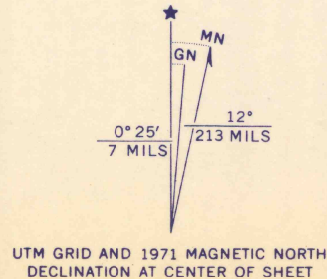


Mapped, edited, and published by the Geological Survey

Control by USGS and USC&GS  
Topography by photogrammetric methods from aerial photographs taken 1969. Field checked 1971

Projection and 10,000-foot grid ticks: Colorado coordinate system, south zone (transverse Mercator)  
1000-meter Universal Transverse Mercator grid ticks, zone 13, shown in blue. 1927 North American datum

Where omitted, land lines have not been established  
Fine red dashed lines indicate selected fence lines



ROAD CLASSIFICATION

Primary highway, hard surface	Light-duty road, hard or improved surface
Secondary highway, hard surface	Unimproved road
○ Interstate Route	○ U.S. Route
	○ State Route

THIS MAP COMPLIES WITH NATIONAL MAP ACCURACY STANDARDS  
FOR SALE BY U.S. GEOLOGICAL SURVEY, DENVER, COLORADO 80225, OR WASHINGTON, D.C. 20242  
A FOLDER DESCRIBING TOPOGRAPHIC MAPS AND SYMBOLS IS AVAILABLE ON REQUEST

BARELA, COLO.  
N3700-W10415/7.5

1971

AMS 5158 III SE—SERIES V877

Formerly 7.5-Minute Series, Color. (42)  
Topog. Prod. (1182)  
24-11  
JWD (K)