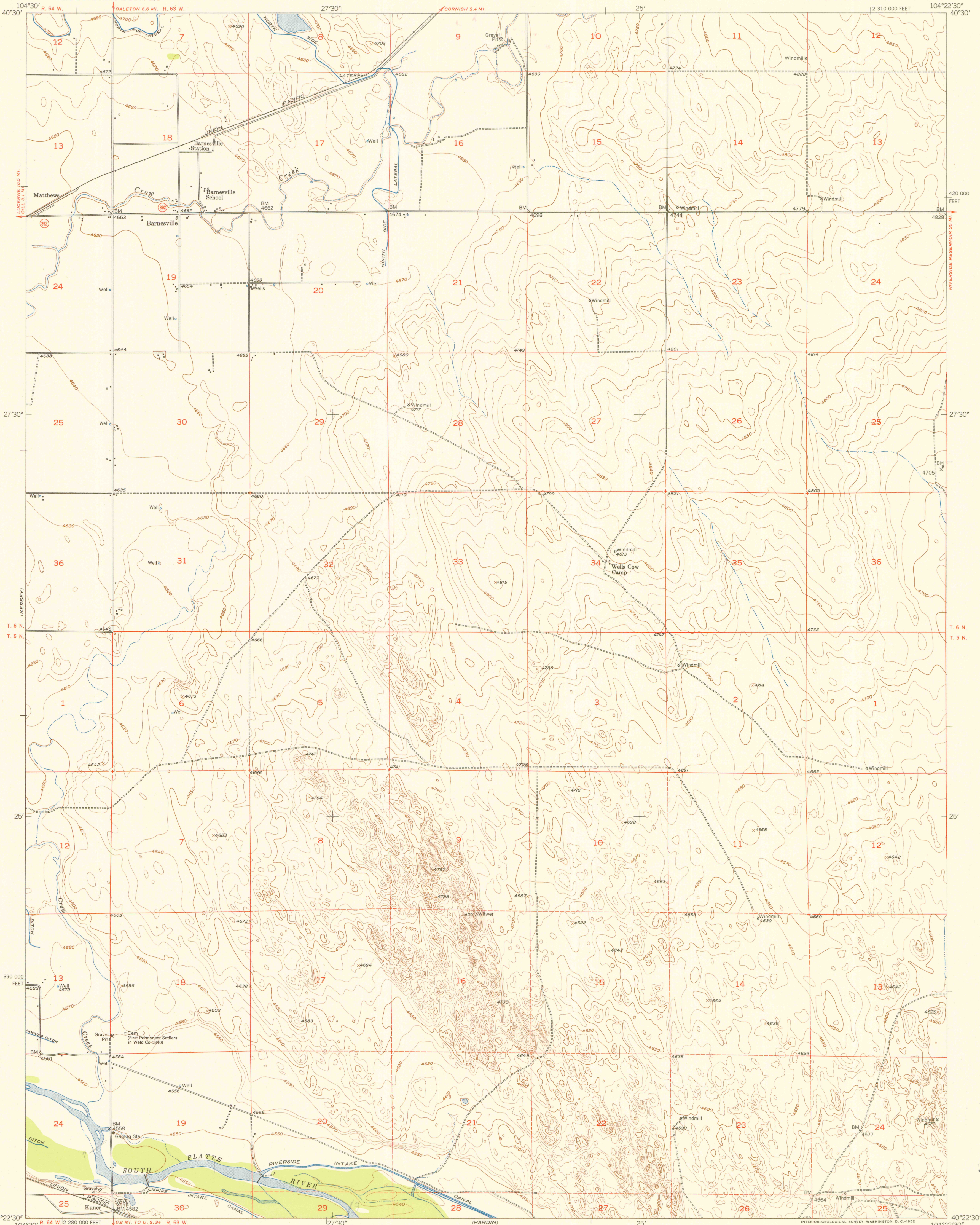
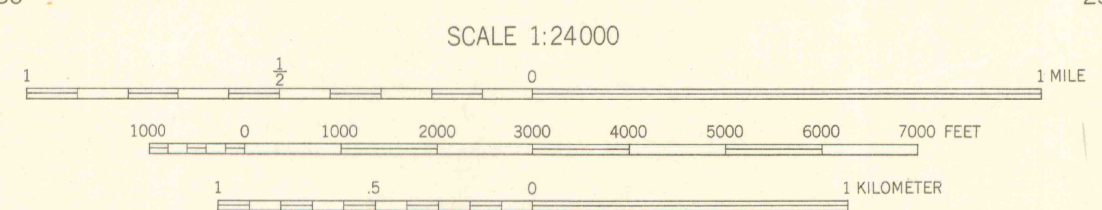


UNITED STATES  
DEPARTMENT OF THE INTERIOR  
GEOLOGICAL SURVEY

BARNESVILLE QUADRANGLE  
COLORADO-WELD CO.  
7.5 MINUTE SERIES (TOPOGRAPHIC)



Maped, edited and published by the Geological Survey as part of the Department of the Interior program for the development of the Missouri River Basin Control by USGS and USC&GS  
Topography from aerial photographs by multiplex methods and plane-table surveys, 1950  
Aerial photographs taken 1949. Field check 1950  
Polyconic projection, 1927 North American datum 10,000-foot grid based on Colorado coordinate system, north zone  
Dashed land lines indicate approximate location



SCALE 1:24000  
CONTOUR INTERVAL 10 FEET  
DATUM IS MEAN SEA LEVEL

ROAD CLASSIFICATION  
Heavy-duty 4 LANE 16 LANE Light-duty   
Medium-duty 4 LANE 6 LANE Unimproved dirt   
U. S. Route State Route

BARNESVILLE, COLO.  
N4022.5-W10422.5/7.5

1950

THIS MAP COMPLIES WITH NATIONAL MAP ACCURACY STANDARDS  
FOR SALE BY U. S. GEOLOGICAL SURVEY, FEDERAL CENTER, DENVER, COLORADO OR WASHINGTON 25, D. C.  
A FOLDER DESCRIBING TOPOGRAPHIC MAPS AND SYMBOLS IS AVAILABLE ON REQUEST

LOTTICE COPY

LIBRARY USE ONLY