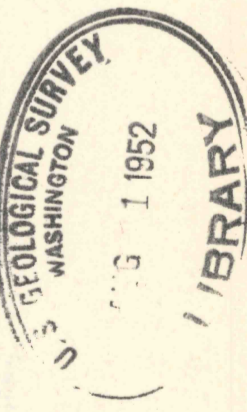
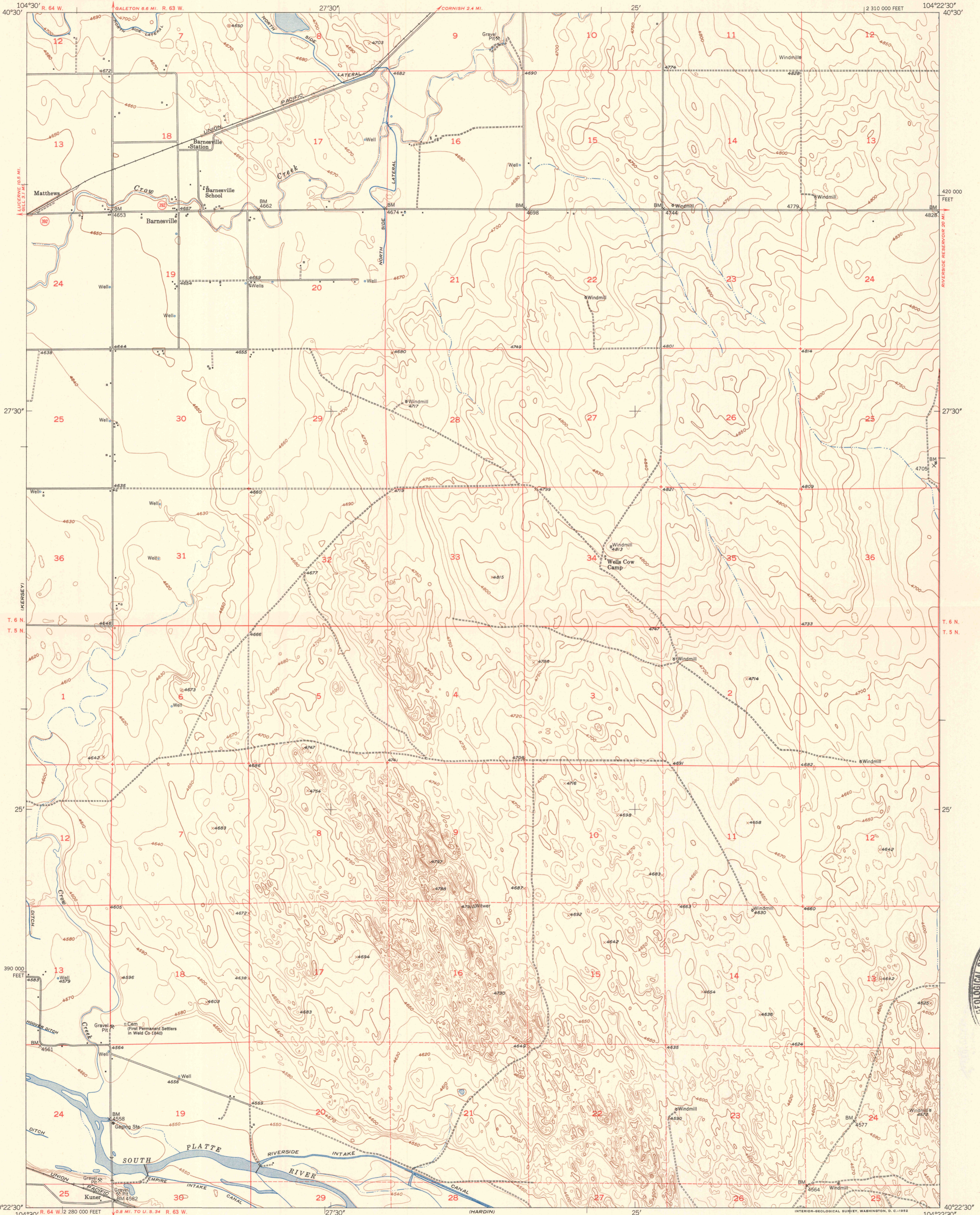


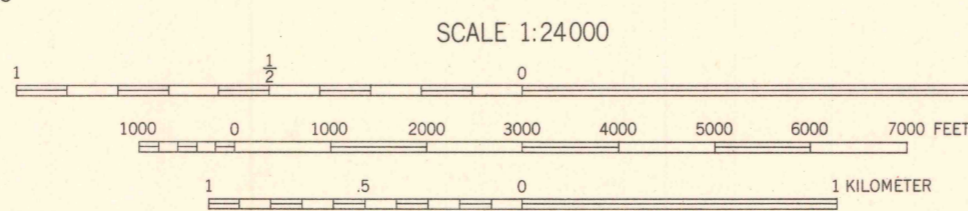
UNITED STATES
DEPARTMENT OF THE INTERIOR
GEOLOGICAL SURVEY

BARNESVILLE QUADRANGLE
COLORADO-WELD CO.
7.5 MINUTE SERIES (TOPOGRAPHIC)



Mapped, edited and published by the Geological Survey as part of the Department of the Interior program for the development of the Missouri River Basin
Control by USGS and USC&GS
Topography from aerial photographs by multiplex methods and plane-table surveys, 1950
Aerial photographs taken 1949. Field check 1950
Polyconic projection. 1927 North American datum
10,000-foot grid based on Colorado coordinate system, north zone
Dashed land lines indicate approximate location

TRUE NORTH
MAGNETIC NORTH
APPROXIMATE MEAN DECLINATION, 1950



SCALE 1:24000
CONTOUR INTERVAL 10 FEET
DATUM IS MEAN SEA LEVEL

ROAD CLASSIFICATION
Heavy-duty 4 LANE 16 LANE Light-duty 2 LANE 16 LANE
Medium-duty 4 LANE 16 LANE Unimproved dirt -----
U. S. Route State Route

BARNESVILLE, COLO.
N4022.5-W10422.5/7.5

1950

THIS MAP COMPLIES WITH NATIONAL MAP ACCURACY STANDARDS
FOR SALE BY U. S. GEOLOGICAL SURVEY, FEDERAL CENTER, DENVER, COLORADO OR WASHINGTON 25, D. C.
A FOLDER DESCRIBING TOPOGRAPHIC MAPS AND SYMBOLS IS AVAILABLE ON REQUEST