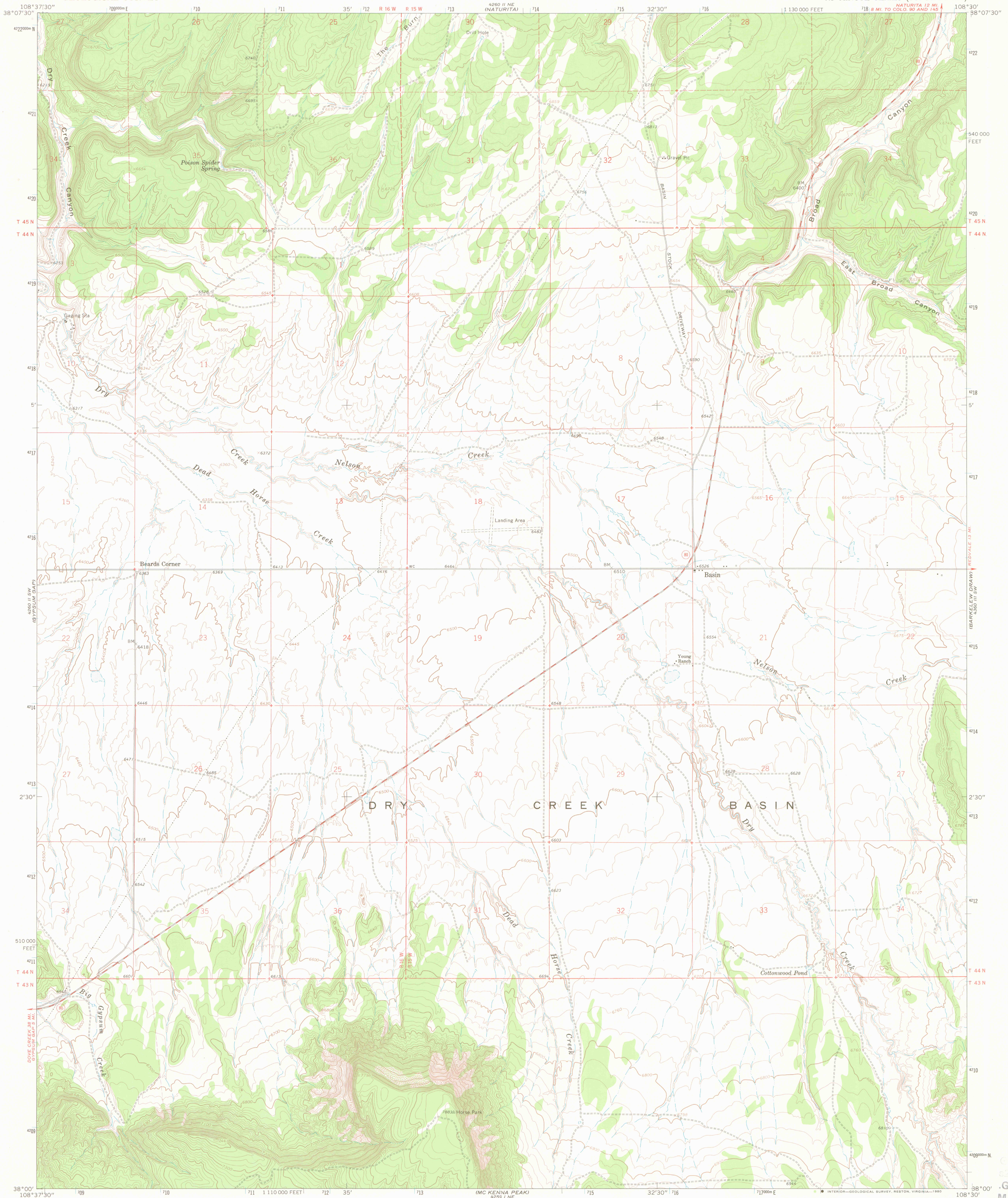
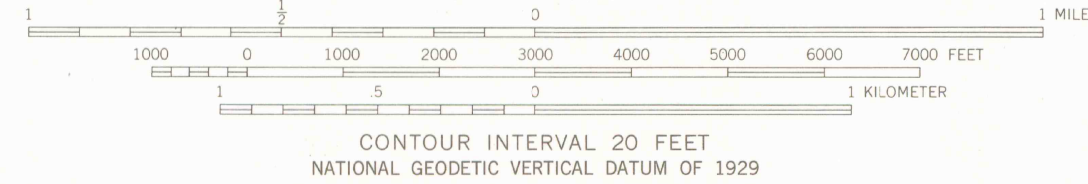
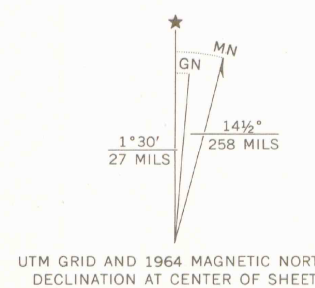


UNITED STATES
DEPARTMENT OF THE INTERIOR
GEOLOGICAL SURVEY

BASIN QUADRANGLE
COLORADO—SAN MIGUEL CO.
7.5 MINUTE SERIES (TOPOGRAPHIC)



Mapped, edited, and published by the Geological Survey
Control by USGS and USC&GS
Topography by photogrammetric methods from aerial
photographs taken 1963. Field checked 1964.
Polyconic projection. 1927 North American datum
10,000-foot grid based on Colorado coordinate system,
south zone
1000-meter Universal Transverse Mercator grid ticks,
zone 12, shown in blue
Fine red dashed lines indicate selected fence lines
Certain land lines are omitted because of insufficient data
To place on the predicted North American Datum 1983
move the projection lines 4 meters north and
57 meters east as shown by dashed corner ticks



SEP 04 2003

ROAD CLASSIFICATION
Medium-duty — Light-duty
Unimproved dirt —
State Route
State Route

BASIN, COLO.
N3800—W10830/7.5

Map Collection
349 Library
Southwest Missouri State University
Springfield, MO 65802

THIS MAP COMPLIES WITH NATIONAL MAP ACCURACY STANDARDS
FOR SALE BY U. S. GEOLOGICAL SURVEY, DENVER, COLORADO 80225 OR RESTON, VIRGINIA 22092
A FOLDER DESCRIBING TOPOGRAPHIC MAPS AND SYMBOLS IS AVAILABLE ON REQUEST

OFFICE COPY
LIBRARY USE ONLY

DMA 4260, II SE—SERIES V877