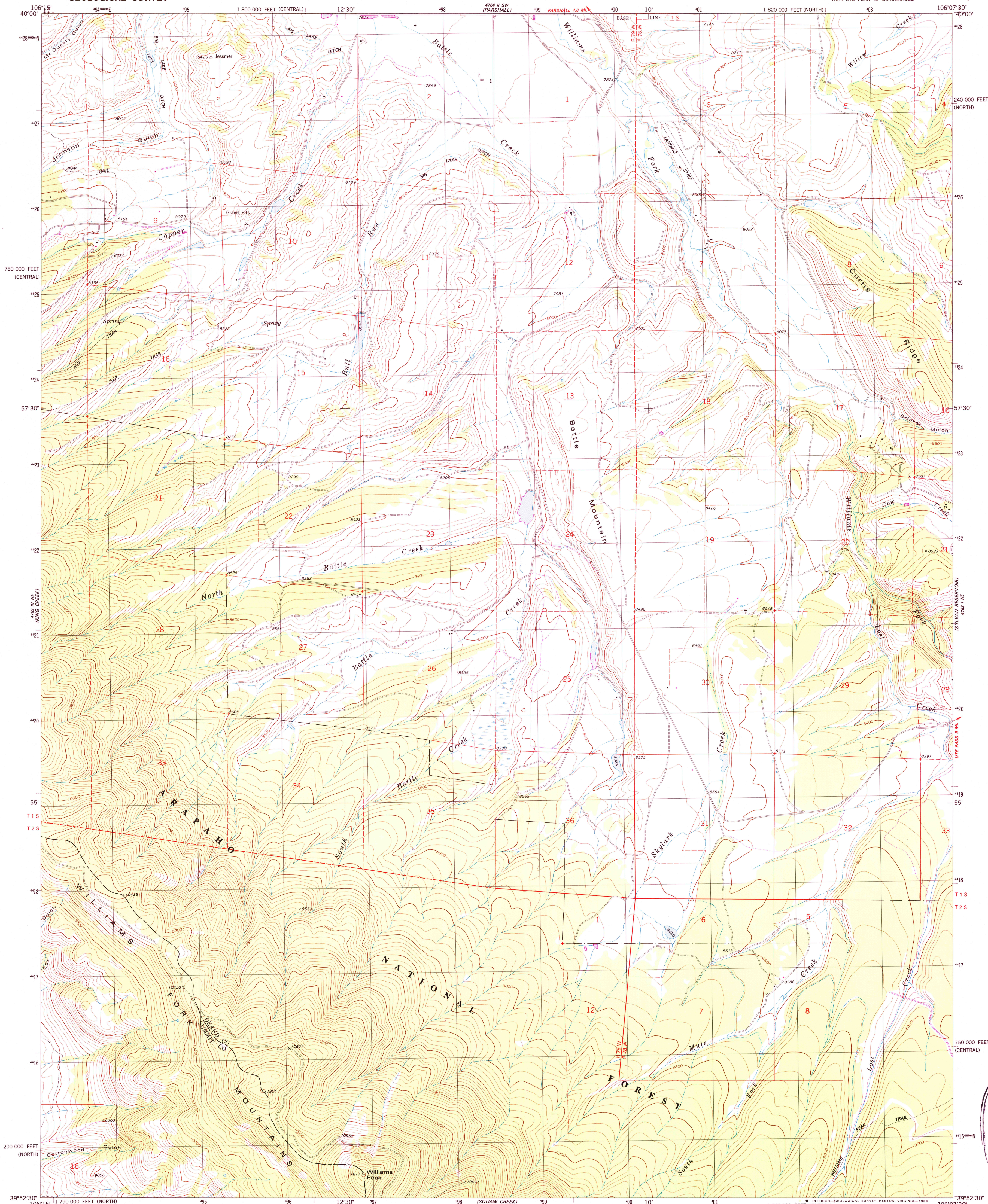


UNITED STATES  
DEPARTMENT OF THE INTERIOR  
GEOLOGICAL SURVEY

BATTLE MOUNTAIN QUADRANGLE  
COLORADO  
7.5 MINUTE SERIES (TOPOGRAPHIC)  
NW/4 UTE PEAK 15' QUADRANGLE



Mapped, edited, and published by the Geological Survey  
Control by USGS, NOS/NOAA, and U.S. Forest Service  
Topography by photogrammetric methods from aerial photographs taken 1975. Field checked 1976. Map edited 1979  
Projection: Colorado coordinate system, north zone (Lambert conformal conic)  
10,000-foot grid ticks based on Colorado coordinate system, north and central zones  
1000-meter Universal Transverse Mercator grid, zone 13  
1927 North American Datum  
Fine red dashed lines indicate selected fence lines  
Where omitted, land lines have not been established or are not shown because of insufficient data  
To place on the predicted North American Datum 1983 move the projection lines 6 meters north and 50 meters east as shown by dashed corner ticks

UTM GRID AND 1987 MAGNETIC NORTH DECLINATION AT CENTER OF SHEET  
There may be private inholdings within the boundaries of the National or State reservations shown on this map

SCALE 1:24 000  
CONTOUR INTERVAL 40 FEET  
NATIONAL GEODETIC VERTICAL DATUM OF 1929

COLORADO  
QUADRANGLE LOCATION

ROAD CLASSIFICATION  
Primary highway, hard surface  
Secondary highway, hard surface  
Unimproved road  
Light-duty road, hard or improved surface  
Interstate Route  
U.S. Route  
State Route

BATTLE MOUNTAIN, COLO.  
NW/4 UTE PEAK 15' QUADRANGLE  
39106-H2-TF-024

Revisions shown in purple and woodland compiled from aerial photographs taken 1983 and other source data  
Partial field check by U.S. Forest Service. Map edited 1987

1979  
PHOTOREVISED 1987  
DMA 4763 I NW—SERIES V877

USGS NMHD HISTORICAL MAP  
JUN 16 1988  
REC'D FILE COPY