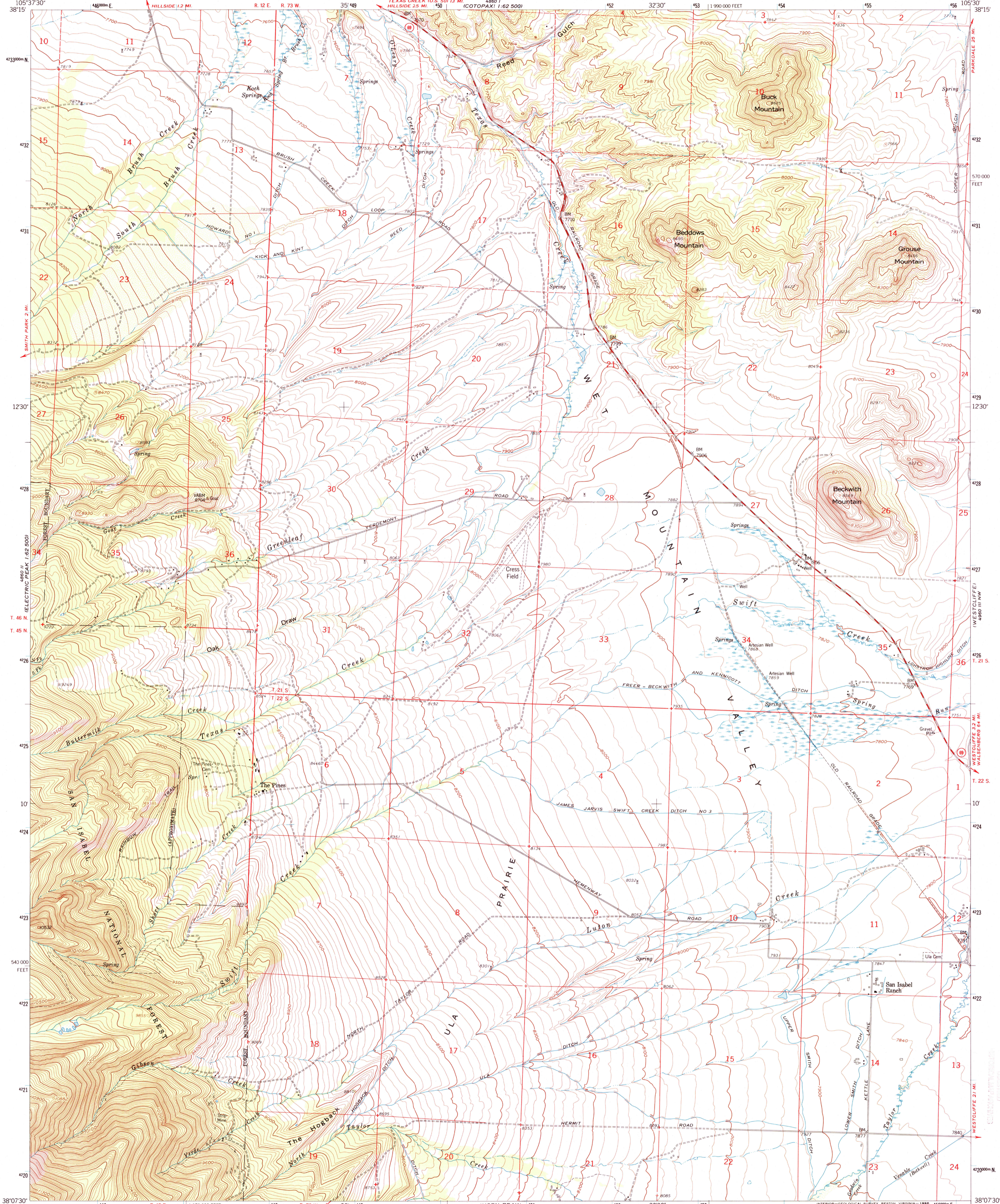




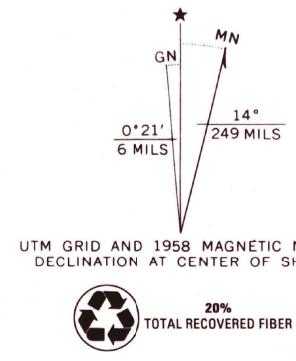
U.S. DEPARTMENT OF THE INTERIOR  
U.S. GEOLOGICAL SURVEY

STATE OF COLORADO  
STATE METAL MINING FUND BOARD

BECKWITH MOUNTAIN QUADRANGLE  
COLORADO—CUSTER CO.  
7.5 MINUTE SERIES (TOPOGRAPHIC)  
NE/4 ELECTRIC PEAK 15' QUADRANGLE



Mapped, edited, and published by the Geological Survey  
Control by USGS and USC&GS  
Topography from aerial photographs by photogrammetric methods  
Aerial photographs taken 1953. Field check 1958  
Polyconic projection. 1927 North American datum  
10,000-foot grid based on Colorado coordinate system,  
south zone  
1000-metre Universal Transverse Mercator grid ticks,  
zone 13, shown in blue  
Dashed land lines indicate approximate locations  
Certain land lines omitted in Ts. 45 and 46 N., R. 12 E.  
because of insufficient data  
Unchecked elevations are shown in brown  
Map photoinspected 1979  
No major culture or drainage changes observed



SCALE 1:24,000  
CONTOUR INTERVAL 20 FEET  
NATIONAL GEODETIC VERTICAL DATUM OF 1929



ROAD CLASSIFICATION  
Medium-duty ——— Light-duty ———  
Unimproved dirt ———  
○ State Route

BECKWITH MOUNTAIN, COLO.  
NE/4 ELECTRIC PEAK 15' QUADRANGLE  
N3807.5—W10530/7.5

1958  
PHOTOINSPECTED 1979  
AMS 4860 II NE—SERIES V877

RECEIVED  
DEC 01 1993

