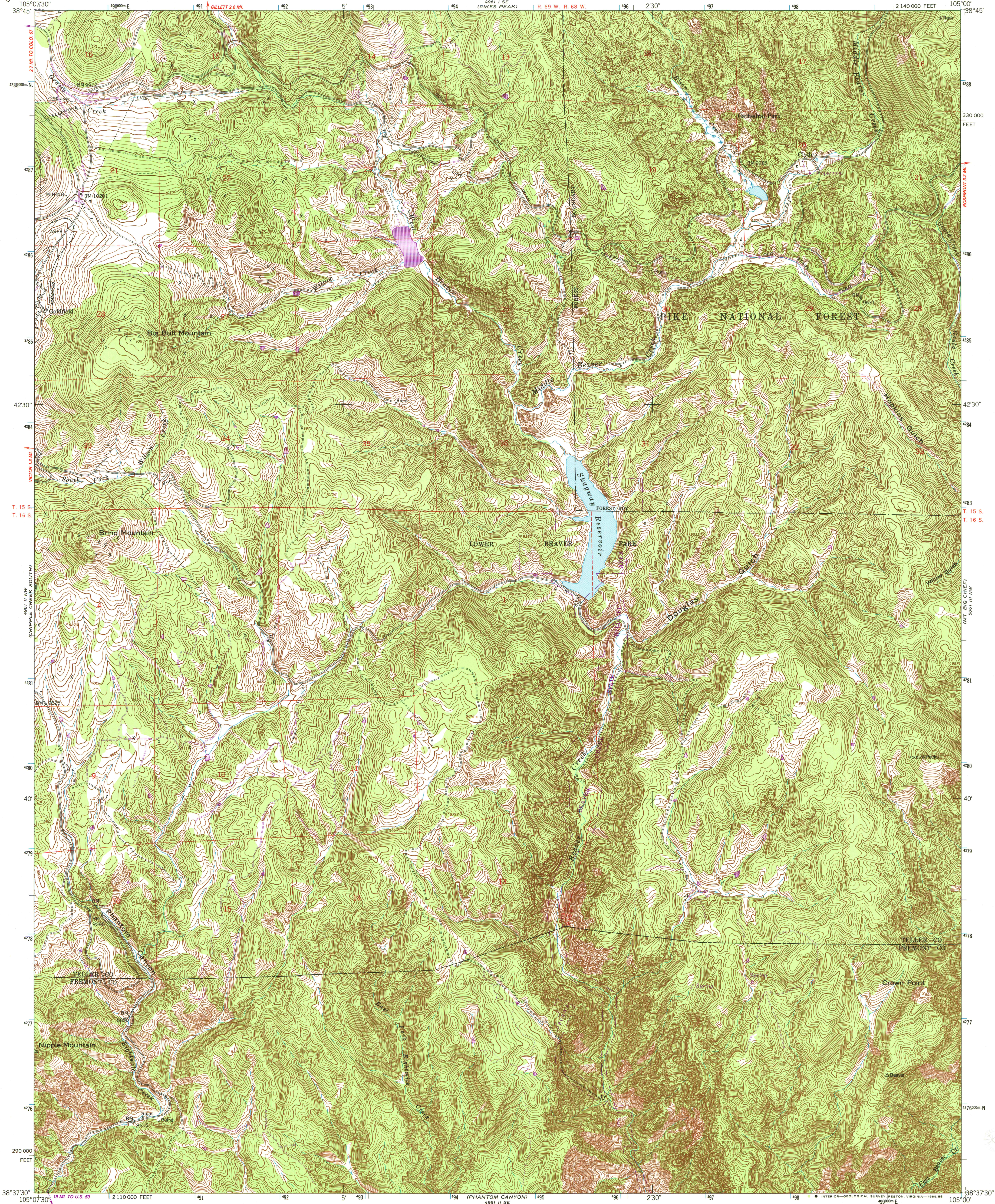


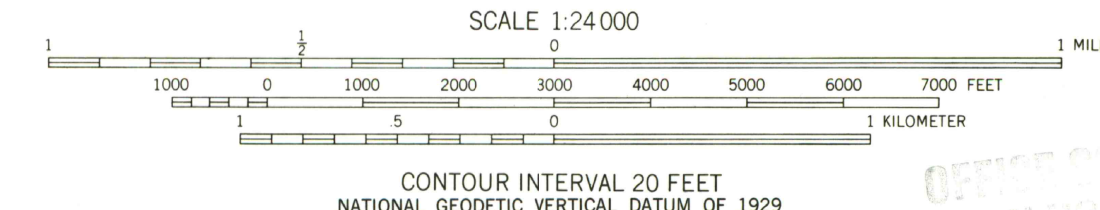
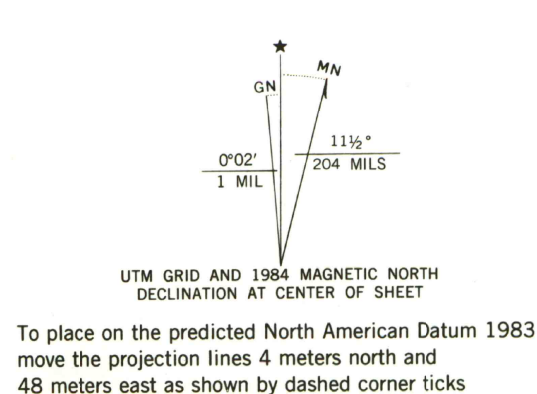
UNITED STATES
DEPARTMENT OF THE INTERIOR
GEOLOGICAL SURVEY

UNITED STATES
DEPARTMENT OF THE ARMY
CORPS OF ENGINEERS

BIG BULL MOUNTAIN QUADRANGLE
COLORADO
7.5 MINUTE SERIES (TOPOGRAPHIC)



Mapped by the Army Map Service
Published for civil use by the Geological Survey
Control by USGS, NOS/NOAA, and USCE
Topography from aerial photographs by multiplex methods
Aerial photographs taken 1950. Field check 1951
Polyconic projection. 1927 North American Datum
10,000-foot grid based on Colorado coordinate system,
central zone
Dashed land lines indicate approximate locations
Unchecked elevations are shown in brown
Locations of all boundaries are approximate
1000-meter Universal Transverse Mercator grid ticks,
zone 13, shown in blue
Certain land lines are omitted because of insufficient data



THIS MAP COMPLIES WITH NATIONAL MAP ACCURACY STANDARDS
FOR SALE BY U.S. GEOLOGICAL SURVEY, DENVER, COLORADO 80225, OR RESTON, VIRGINIA 22092
A FOLDER DESCRIBING TOPOGRAPHIC MAPS AND SYMBOLS IS AVAILABLE ON REQUEST

There may be private inholdings within the boundaries
of the National or State reservations shown on this map
Revisions shown in purple and woodland compiled by
the Geological Survey from aerial photographs taken
1983 and other source data. Partial field check by
U. S. Forest Service. Map edited 1984

ROAD CLASSIFICATION
Heavy-duty... 4 LANE 6 LANE Light-duty...
Medium-duty... 4 LANE 6 LANE Unimproved dirt...
U. S. Route... State Route...
BIG BULL MOUNTAIN, COLO.
38105-F1-TF-024
1951
PHOTOREVISED 1984
DMA 4961 II NE-SERIES V877

G 3700
s24
.G4
MAP ROOM