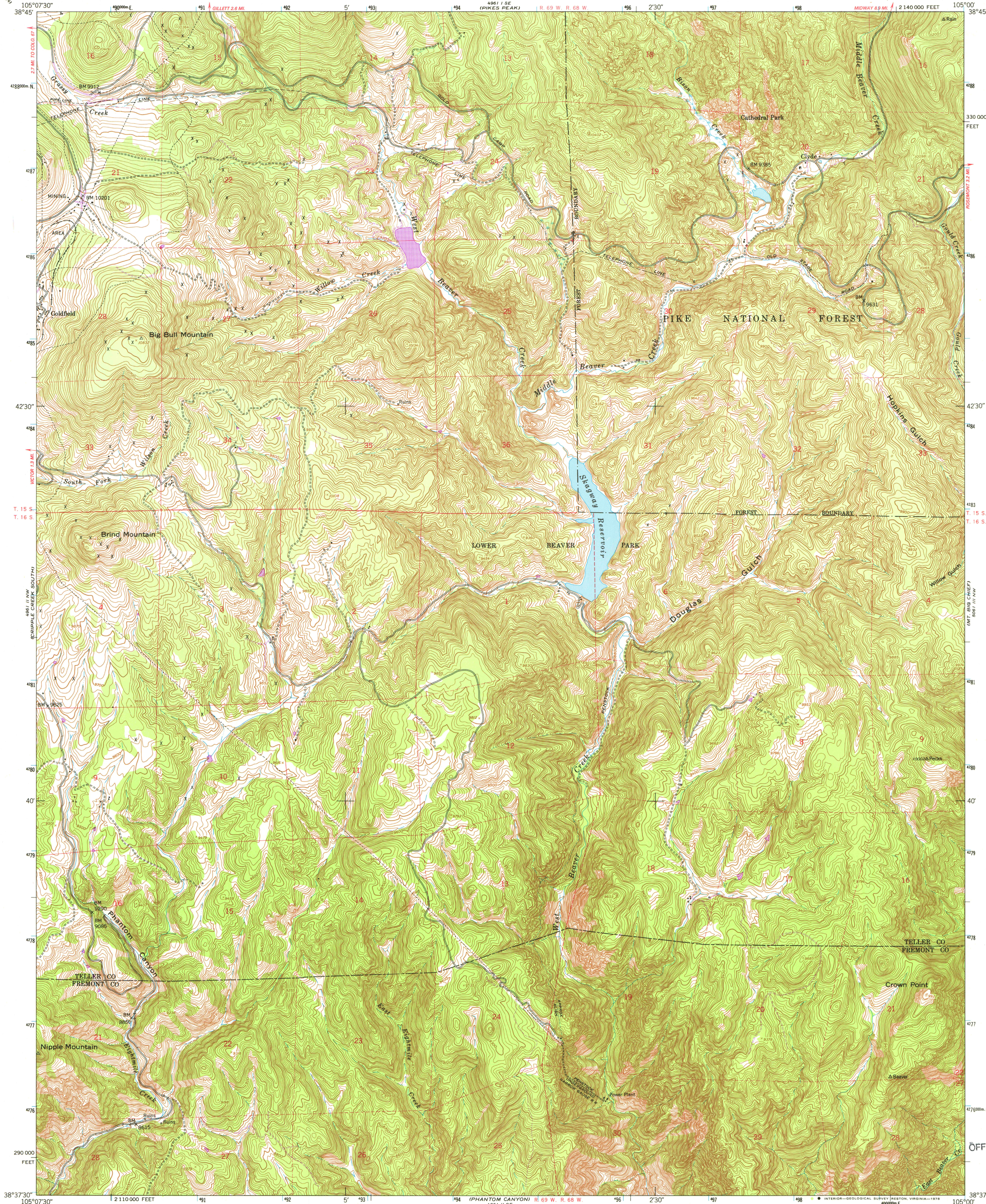


UNITED STATES  
DEPARTMENT OF THE INTERIOR  
GEOLOGICAL SURVEY

UNITED STATES  
DEPARTMENT OF THE ARMY  
CORPS OF ENGINEERS

BIG BULL MOUNTAIN QUADRANGLE  
COLORADO  
7.5 MINUTE SERIES (TOPOGRAPHIC)



Mapped by the Army Map Service  
Published for civil use by the Geological Survey

Control by USGS, NOS/NOAA, and USCE

Topography from aerial photographs by multiplex methods

Aerial photographs taken 1950. Field check 1951

Polyconic projection. 1927 North American datum

10,000-foot grid based on Colorado coordinate system,

central zone

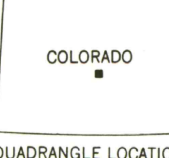
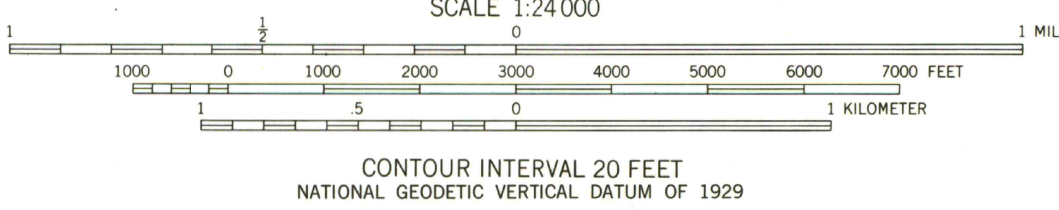
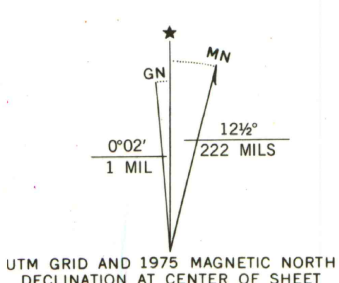
Dashed land lines indicate approximate locations

Unchecked elevations are shown in brown

Locations of all boundaries are approximate

1000-meter Universal Transverse Mercator grid ticks,

zone 13, shown in blue



ROAD CLASSIFICATION			
Heavy-duty	4 LANE 16 LANE	Light-duty	Unimproved dirt
Medium-duty	4 LANE 16 LANE	Unimproved dirt	=====
U.S. Route		State Route	

BIG BULL MOUNTAIN, COLO.  
N 3837.5—W 10500.7.5

1951  
PHOTOREVISED 1975  
AMS 4961 II NE—SERIES V877

THIS MAP COMPLIES WITH NATIONAL MAP ACCURACY STANDARDS  
FOR SALE BY U.S. GEOLOGICAL SURVEY, DENVER, COLORADO 80225, OR RESTON, VIRGINIA 22092  
A FOLDER DESCRIBING TOPOGRAPHIC MAPS AND SYMBOLS IS AVAILABLE ON REQUEST

Revisions shown in purple compiled by the Geological Survey from  
aerial photographs taken 1975. This information not field checked

OFFICE COPY

U.S. GOVT  
DOCUMENT  
LIBRARY USE ONLY  
ARTHUR L. LARSEN  
DENVER, COLO. 80202