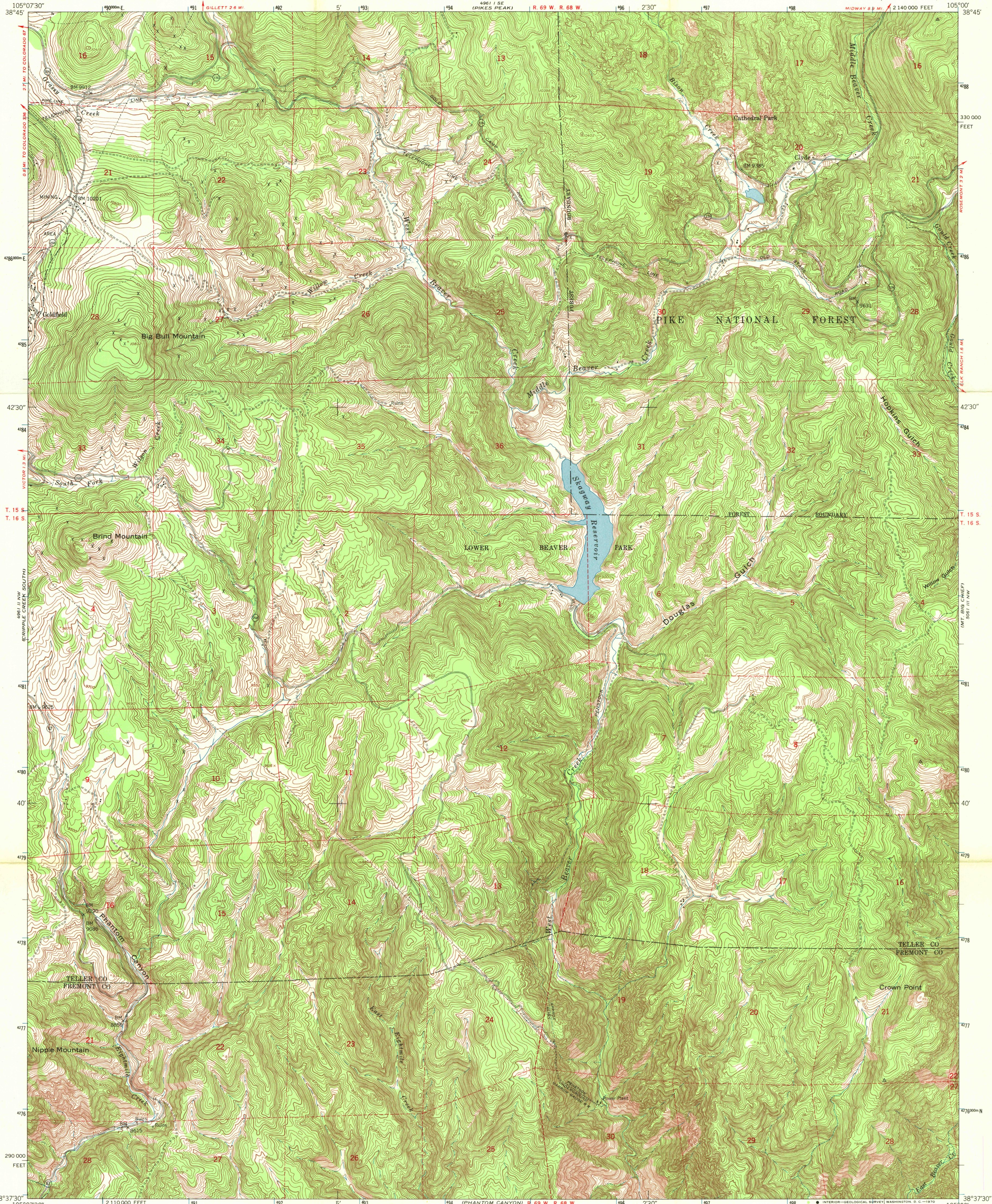


UNITED STATES
DEPARTMENT OF THE INTERIOR
GEOLOGICAL SURVEY

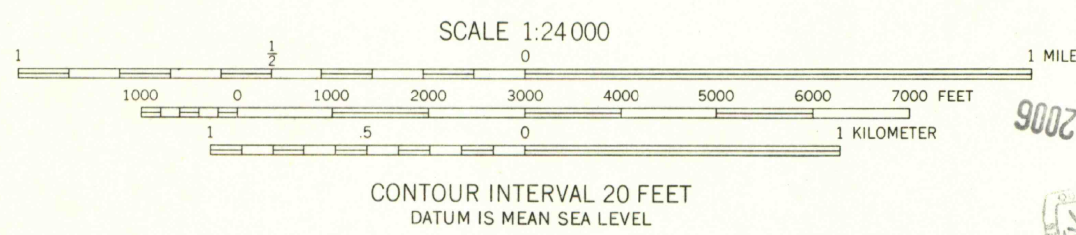
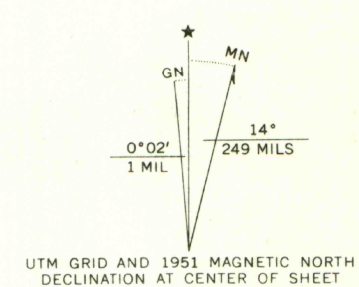
UNITED STATES
DEPARTMENT OF THE ARMY
CORPS OF ENGINEERS

ALPINE RESCUE TEAM
BOX 934
EVERGREEN, COLORADO 80439

BIG BULL MOUNTAIN QUADRANGLE
COLORADO
7.5 MINUTE SERIES (TOPOGRAPHIC)



Mapped by the Army Map Service
Published for civil use by the Geological Survey
Control by USGS, USC&GS, and USCE
Topography from aerial photographs by multiplex methods
Aerial photographs taken 1950. Field check 1951
Polyconic projection. 1927 North American datum
10,000-foot grid based on Colorado coordinate system,
central zone
Dashed land lines indicate approximate locations
Unchecked elevations are shown in brown
Locations of all boundaries are approximate
1000-meter Universal Transverse Mercator grid ticks,



ROAD CLASSIFICATION

Heavy-duty	4 LANE 16 LANE	Light-duty
Medium-duty	4 LANE 16 LANE	Unimproved dirt

U.S. Route State Route

COLORADO

QUADRANGLE LOCATION

BIG BULL MOUNTAIN, COLO.
N 38° 37' 30" - W 105° 00' 00" / 7.5

1951

AMS 4961 II NE-SERIES V877

G 3700
s24
.G4
MAP ROOM