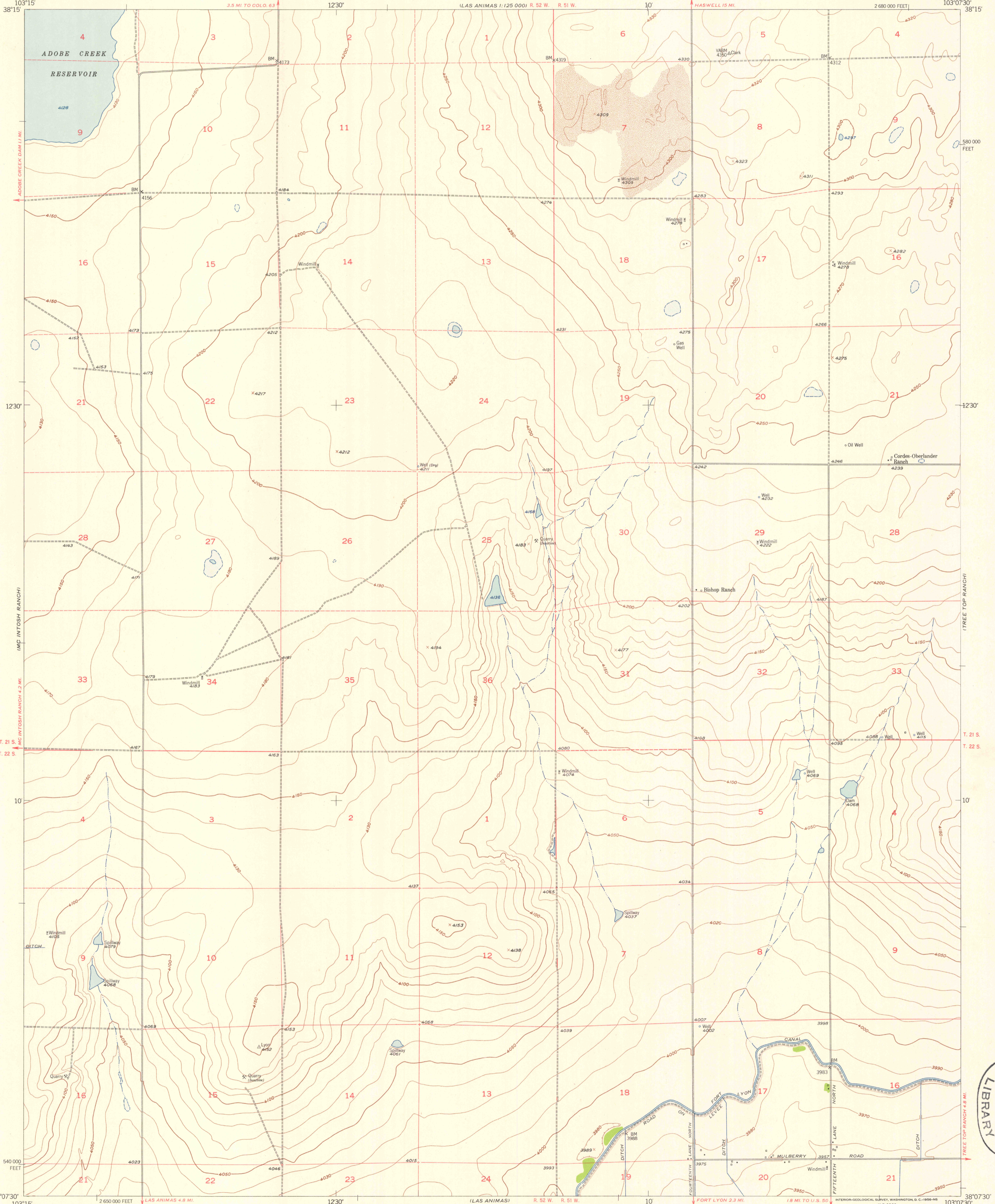


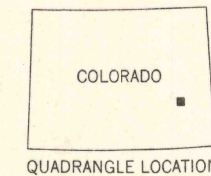
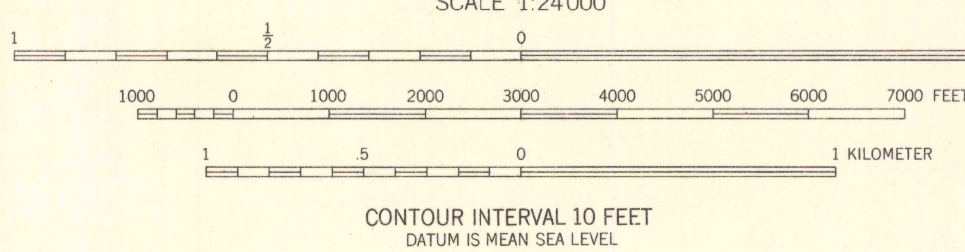
(LAS ANIMAS)  
1:125,000

(LAS ANIMAS)  
1:125,000



Maped, edited, and published by the Geological Survey  
Control by USGS and USC&GS  
Culture and drainage in part compiled from aerial photographs  
taken 1947. Topography by planetable surveys 1955  
Polyconic projection. 1927 North American datum  
10,000-foot grid based on Colorado coordinate system,  
south zone  
Dashed land lines indicate approximate locations  
Offsets and angles shown in T. 21 S. and T. 22 S., R. 51 W.  
are based on cultural developments and are not  
reflected in the original land surveys

TRUE NORTH  
MAGNETIC NORTH  
APPROXIMATE MEAN  
DECLINATION, 1955



ROAD CLASSIFICATION  
Heavy-duty ——— Light-duty ———  
Medium-duty ——— Unimproved dirt ———  
U. S. Route      State Route

BISHOP RANCH, COLO.  
N3807.5—W10307.5/7.5  
1955

THIS MAP COMPLIES WITH NATIONAL MAP ACCURACY STANDARDS  
FOR SALE BY U.S. GEOLOGICAL SURVEY, FEDERAL CENTER, DENVER, COLORADO OR WASHINGTON 25, D.C.  
A FOLDER DESCRIBING TOPOGRAPHIC MAPS AND SYMBOLS IS AVAILABLE ON REQUEST

LIBRARY  
OCT - 1 1950  
U.S. GEOLOGICAL SURVEY  
WASHINGTON, D.C.