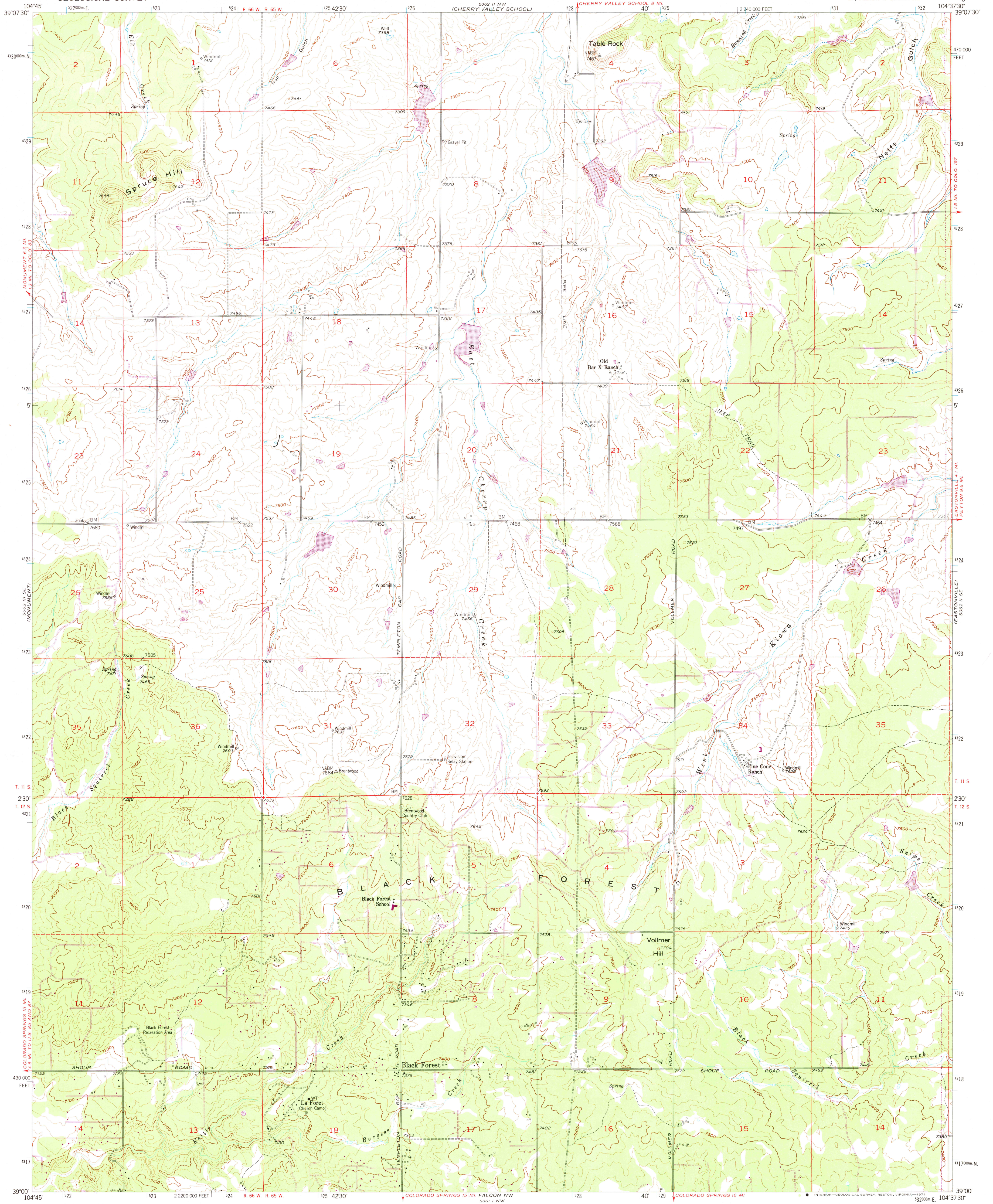


5062 II NW
(GREENLAND)

UNITED STATES
DEPARTMENT OF THE INTERIOR
GEOLOGICAL SURVEY

BLACK FOREST QUADRANGLE
COLORADO-EL PASO CO.
7.5 MINUTE SERIES (TOPOGRAPHIC)
SW 1/4 ELBERT 15 QUADRANGLE

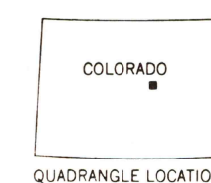
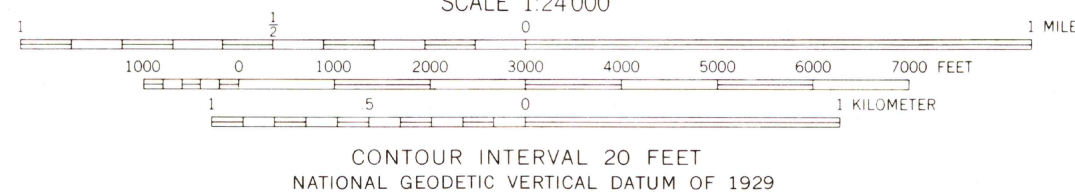
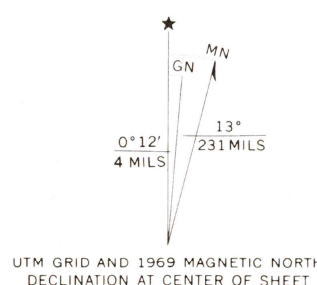
5062 II NE
(ELBERT)



Mapped, edited, and published by the Geological Survey

Control by USGS and USC&GS
Topography from aerial photographs by multiplex methods
Aerial photographs taken 1952. Field check 1954
Polyconic projection. 1927 North American datum
10,000-foot grid based on Colorado coordinate system,
central zone
1000-meter Universal Transverse Mercator grid ticks,
zone 13, shown in blue

Revisions shown in purple compiled from aerial photographs
taken 1969. This information not field checked



ROAD CLASSIFICATION
Light-duty ——— Unimproved dirt - - - - -

THIS MAP COMPLIES WITH NATIONAL MAP ACCURACY STANDARDS
FOR SALE BY U. S. GEOLOGICAL SURVEY, DENVER, COLORADO 80225, OR RESTON, VIRGINIA 22092
A FOLDER DESCRIBING TOPOGRAPHIC MAPS AND SYMBOLS IS AVAILABLE ON REQUEST

USGS
Historical File
Topographic Division

BLACK FOREST, COLO.
SW 1/4 ELBERT 15 QUADRANGLE
N3900 - W10437.5/7.5
1954
PHOTOREVISED 1969
AMS 5062 II SW - SERIES V877

AUG 08 1974
6460