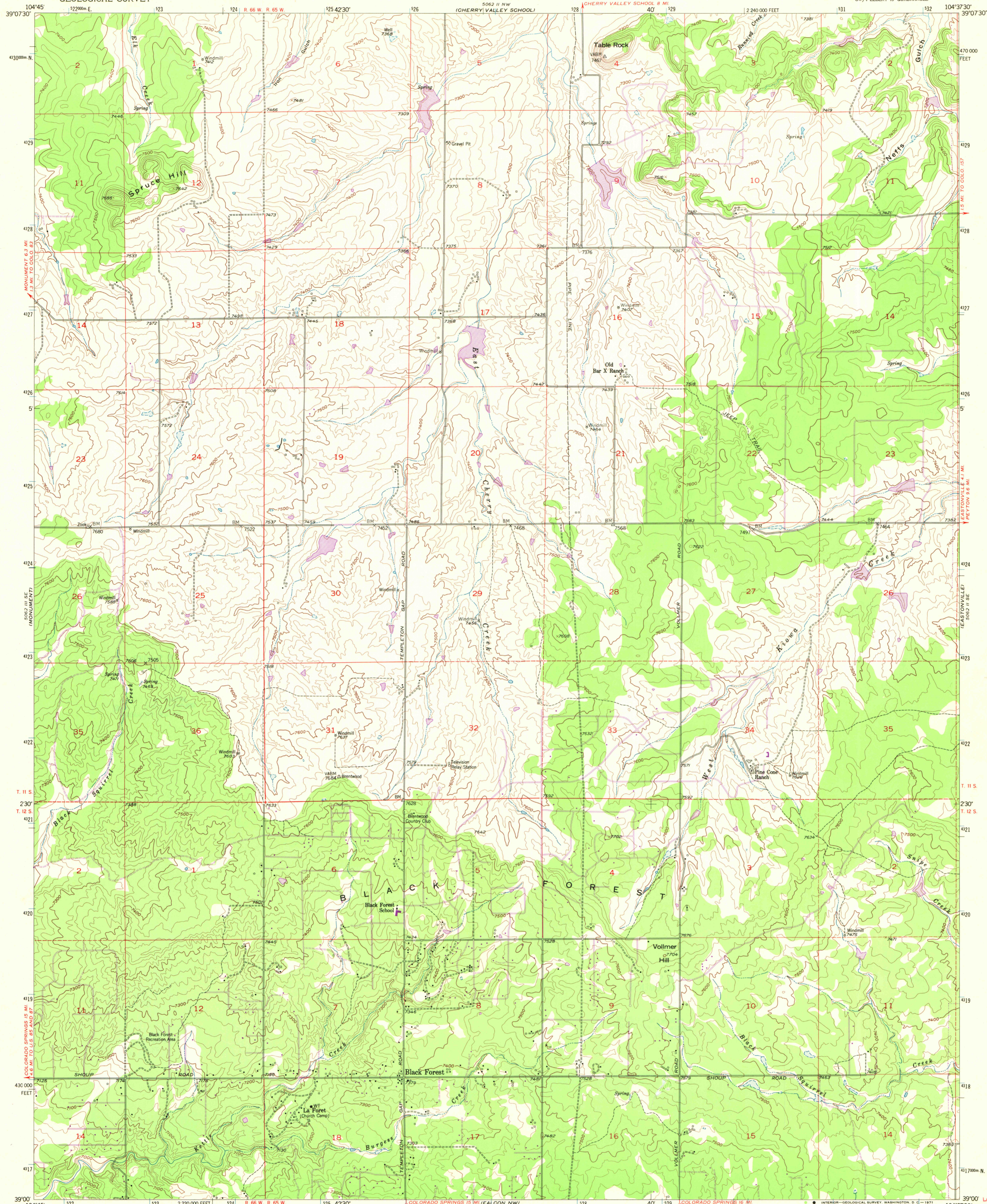


GREENLAND

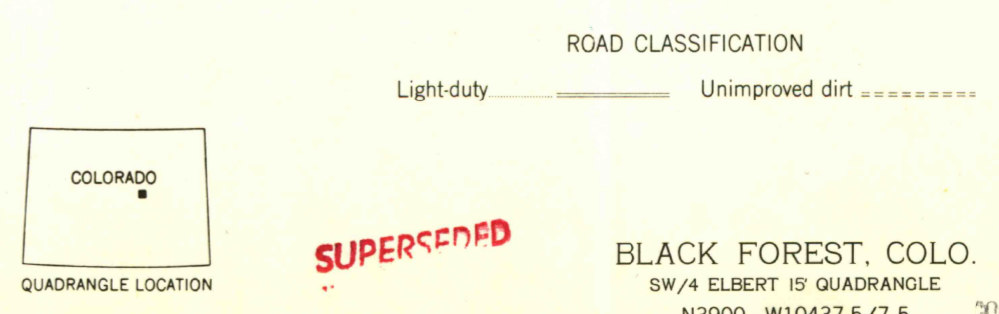
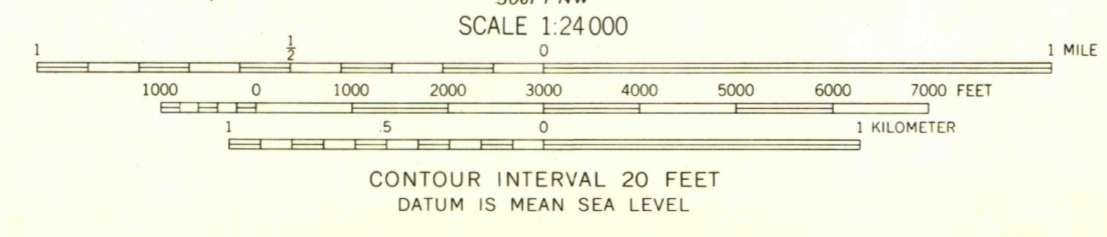
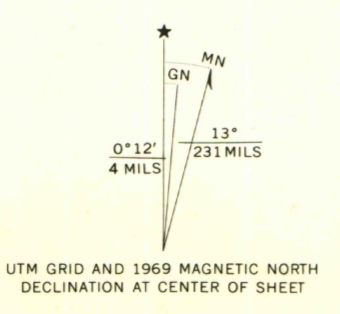
UNITED STATES
DEPARTMENT OF THE INTERIOR
GEOLOGICAL SURVEY

BLACK FOREST QUADRANGLE
COLORADO-EL PASO CO.
7.5 MINUTE SERIES (TOPOGRAPHIC)

ELBERT 162500



Maped, edited, and published by the Geological Survey
Control by USGS and USCGS
Topography from aerial photographs by multiplex methods
Aerial photographs taken 1952. Field check 1954
Polyconic projection, 1927 North American datum
10,000-foot grid based on Colorado coordinate system,
central zone
1000-meter Universal Transverse Mercator grid ticks,
zone 13, shown in blue
Revisions shown in purple compiled from aerial photographs
taken 1969. This information not field checked



THIS MAP COMPLIES WITH NATIONAL MAP ACCURACY STANDARDS
FOR SALE BY U.S. GEOLOGICAL SURVEY, DENVER, COLORADO 80225, OR WASHINGTON, D. C. 20242
A FOLDER DESCRIBING TOPOGRAPHIC MAPS AND SYMBOLS IS AVAILABLE ON REQUEST

SUPERSEDED

BLACK FOREST, COLO.
SW/4 ELBERT 16 QUADRANGLE
N3900-W10437.5/7.5
1954
PHOTOREVISED 1969
AMS 5062 II SW-SERIES V877

U.S. GOVT
DOCUMENTS
SUPERSEDED
ARTHUR LAKES LIBRARY
QUADRAU SCHOOL OF MINES
WOLFEN, COLORADO

LIBRARY USE ONLY