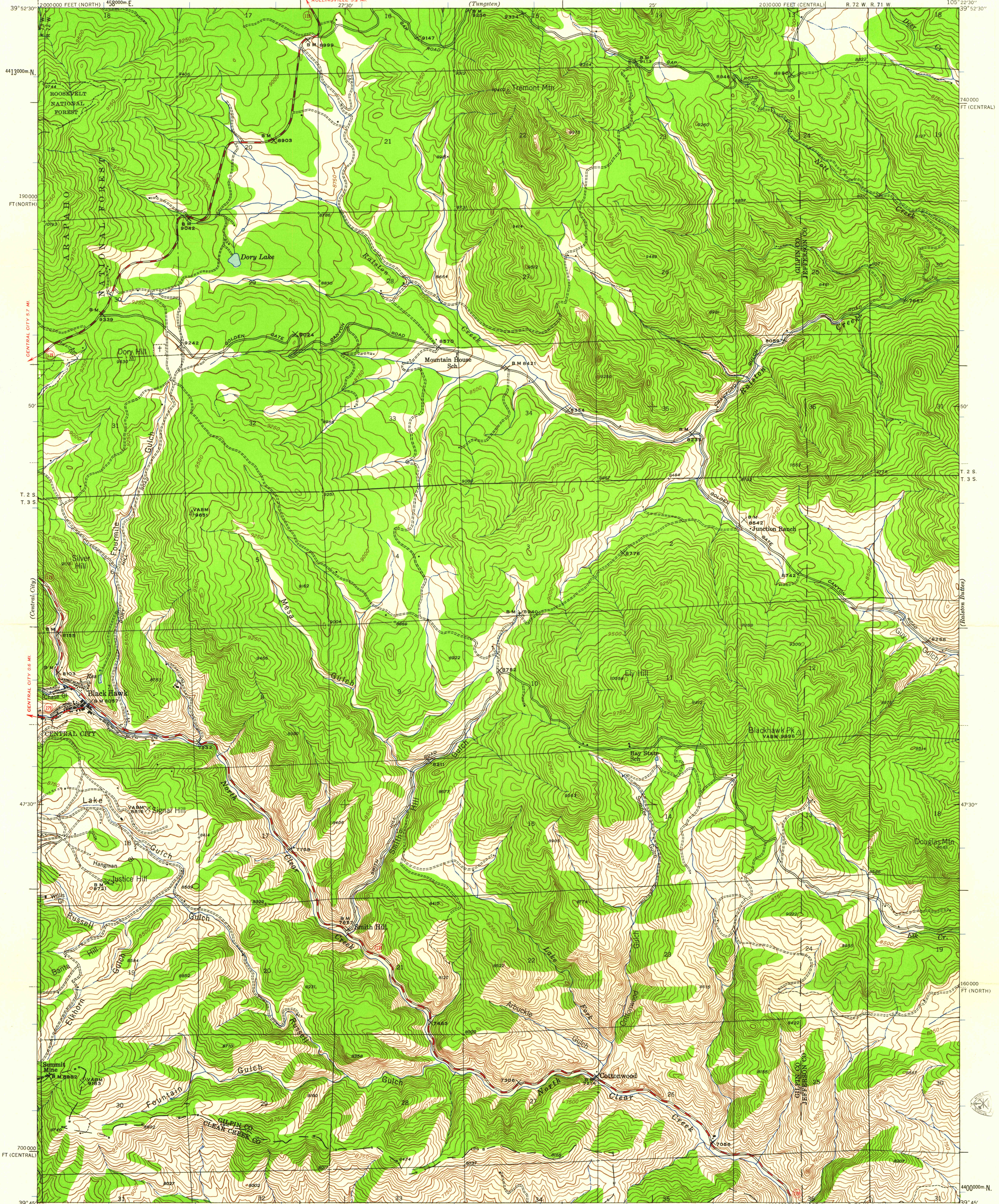


UNITED STATES
DEPARTMENT OF THE INTERIOR
GEOLOGICAL SURVEY

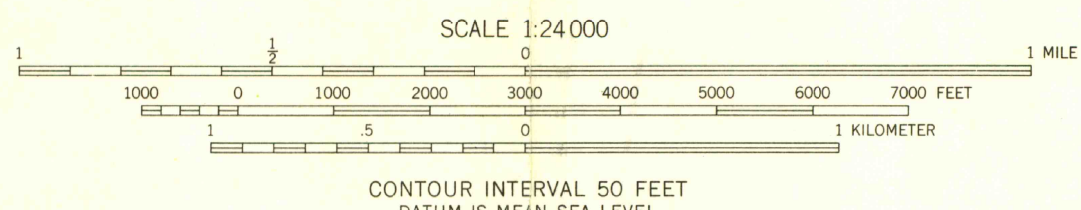
STATE OF COLORADO
STATE HIGHWAY DEPARTMENT CITY AND COUNTY OF DENVER
DENVER BOARD OF WATER COMMISSIONERS

COLORADO
BLACK HAWK QUADRANGLE
7 1/2-MINUTE SERIES



Mapped by the Geological Survey
and from Denver City special survey
1942
Works Progress Administration Nos. 4803 and 5012
Colorado State Highway Department, City and County
of Denver, Denver Board of Water Commissioners, Sponsors
Max J. Gleissner, Geological Survey, Supervisor

TRUE NORTH
MAGNETIC NORTH
APPROXIMATE MEAN
DECLINATION, 1942



ROAD CLASSIFICATION
Medium-duty ——— Light-duty ———
Unimproved dirt - - - - -
State Route ○

Polyconic projection. 1927 North American datum
10000 foot grids based on Colorado (North) and
Colorado (Central) rectangular coordinate systems
1000 meter Universal Transverse Mercator grid ticks,
zone 13, shown in blue

BLACK HAWK, COLO.
N 3945—W 10522.5/7.5
1942

FOR SALE BY U. S. GEOLOGICAL SURVEY, DENVER 25, COLORADO OR WASHINGTON 25, D. C.
A FOLDER DESCRIBING TOPOGRAPHIC MAPS AND SYMBOLS IS AVAILABLE ON REQUEST

SEP 2 2013
ATLAS
GEOLOGICAL

G 3700
s24
.G4
MAP ROOM

DUPLICATE COPY
HIGHEST QUALITY