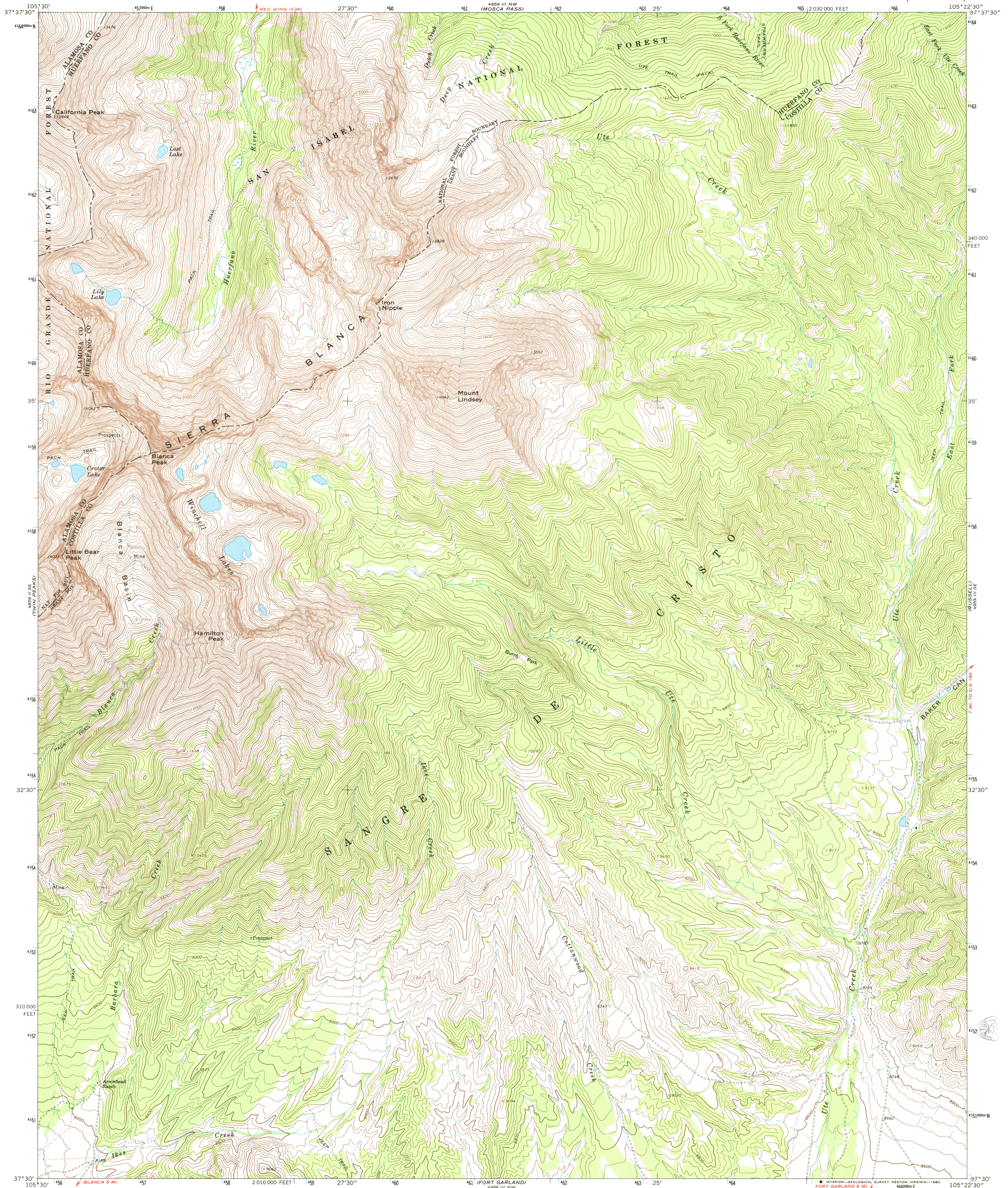
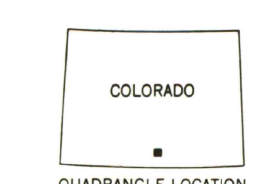
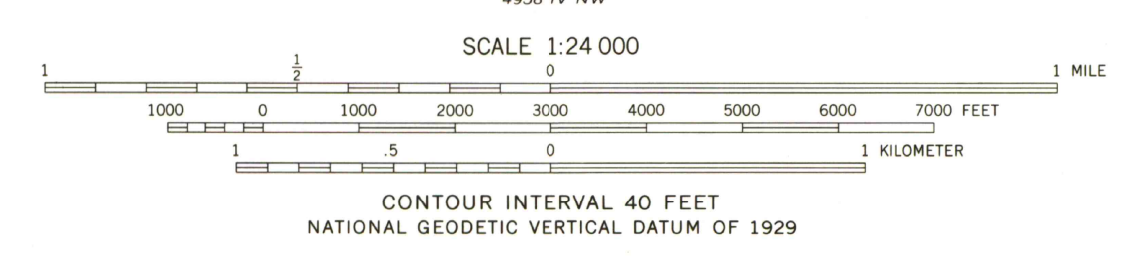
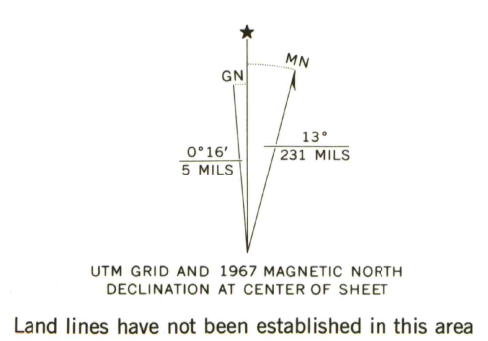


UNITED STATES
DEPARTMENT OF THE INTERIOR
GEOLOGICAL SURVEY

BLANCA PEAK QUADRANGLE
COLORADO
7.5 MINUTE SERIES (TOPOGRAPHIC)



Mapped, edited, and published by the Geological Survey
Control by USGS and USC&GS
Topography by photogrammetric methods from aerial photographs taken 1966. Field checked 1967
Polyconic projection. 1927 North American datum 10,000-foot grid based on Colorado coordinate system, south zone
1000-meter Universal Transverse Mercator grid ticks, zone 13, shown in blue
To place on the predicted North American Datum 1983 move the projection lines 2 meters north and 49 meters east as shown by the dashed corner ticks
There may be private inholdings within the boundaries of the Interior or State reservations shown on this map
Fine red dashed lines indicate selected fence lines



ROAD CLASSIFICATION
Unimproved dirt = - - - - -
BLANCA PEAK, COLO.
N3730—W10522.5/7.5
1967
DMA 4959 III SW—SERIES V877

THIS MAP COMPLIES WITH NATIONAL MAP ACCURACY STANDARDS
FOR SALE BY U. S. GEOLOGICAL SURVEY, DENVER, COLORADO 80225, OR RESTON, VIRGINIA 22092
A FOLDER DESCRIBING TOPOGRAPHIC MAPS AND SYMBOLS IS AVAILABLE ON REQUEST

OFFICE COPY
LIBRARY USE ONLY

G 3700
824
.G4
MAP ROOM

DEC 9 1 2006

ARTHUR LANGE LIBRARY
COLORADO SCHOOL OF MINES