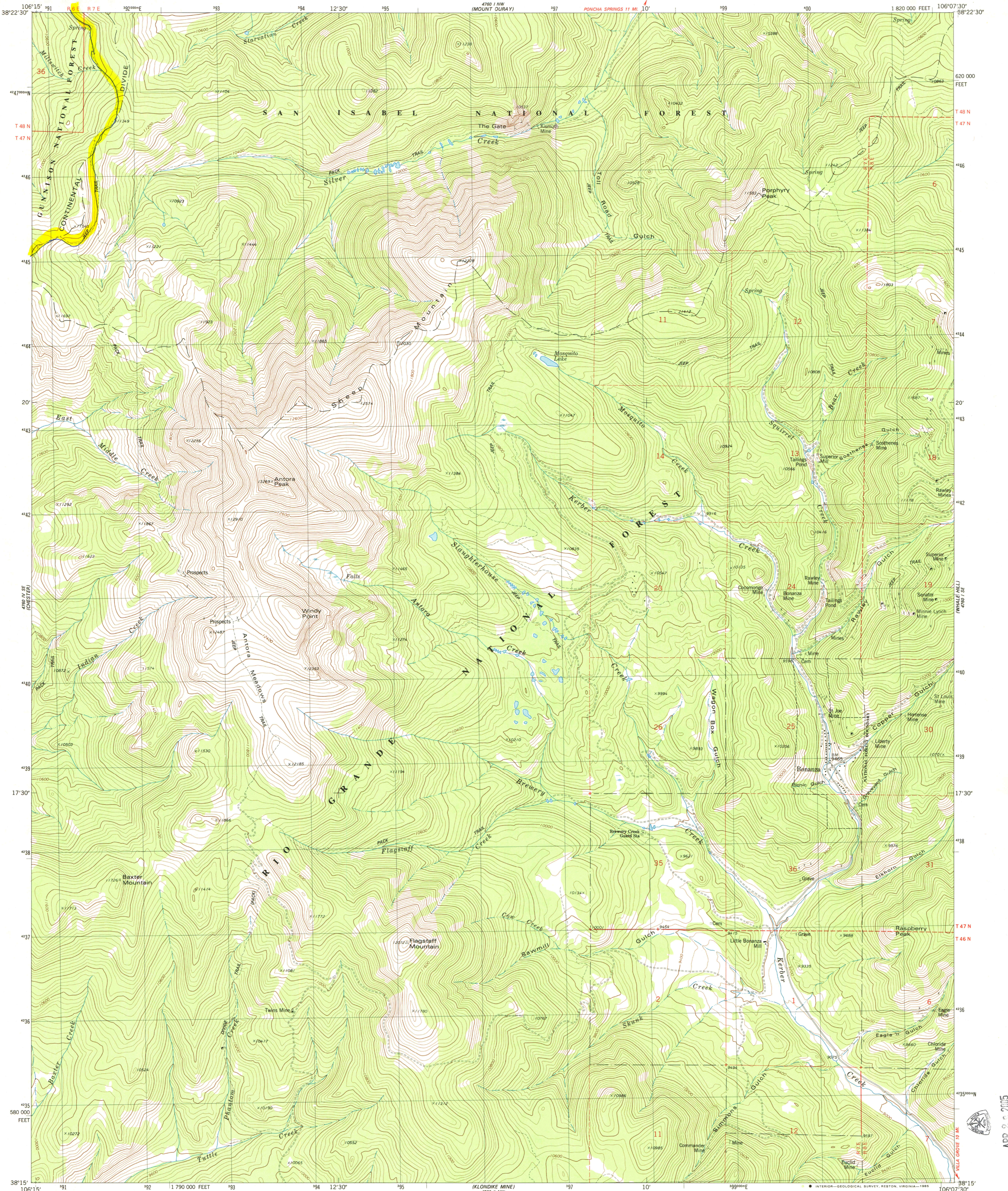
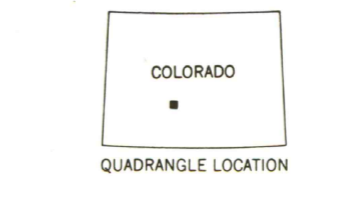
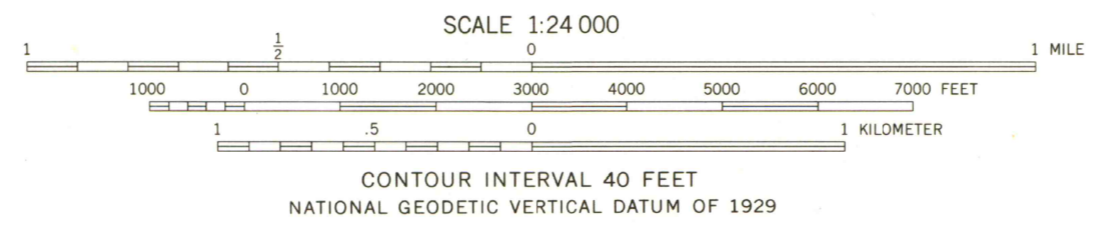
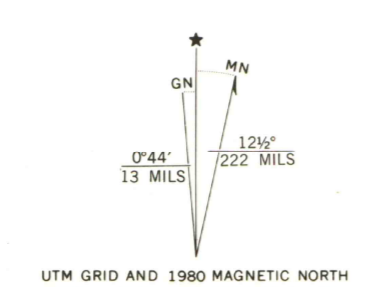


37



Mapped, edited, and published by the Geological Survey
Control by USGS and NOS/NOAA
Topography by photogrammetric methods from aerial photographs taken 1975. Field checked 1976. Map edited 1980
Projection and 10,000-foot grid ticks: Colorado coordinate system, south zone (Lambert conformal conic) 1000-meter Universal Transverse Mercator grid, zone 13 1927 North American Datum
To place on the predicted North American Datum 1983 move the projection lines 4 meters north and 51 meters east as shown by dashed corner ticks
Certain land lines are omitted because of insufficient data
There may be private inholdings within the boundaries of the National or State reservations shown on this map



ROAD CLASSIFICATION

Primary highway, hard surface	Light-duty road, hard or improved surface
Secondary highway, hard surface	Unimproved road
Interstate Route	U.S. Route
	State Route

BONANZA, COLO.
38106-C2-TF-024
1980
DMA 4760 1 SW-SERIES V877

APR 20 2005
ARTHUR LIVES LORRY
COLORADO SCHOOL OF MINES
08700
004
.064
MAP ROOM

THIS MAP COMPLIES WITH NATIONAL MAP ACCURACY STANDARDS
FOR SALE BY U.S. GEOLOGICAL SURVEY, DENVER, COLORADO 80225, OR RESTON, VIRGINIA 22092
A FOLDER DESCRIBING TOPOGRAPHIC MAPS AND SYMBOLS IS AVAILABLE ON REQUEST