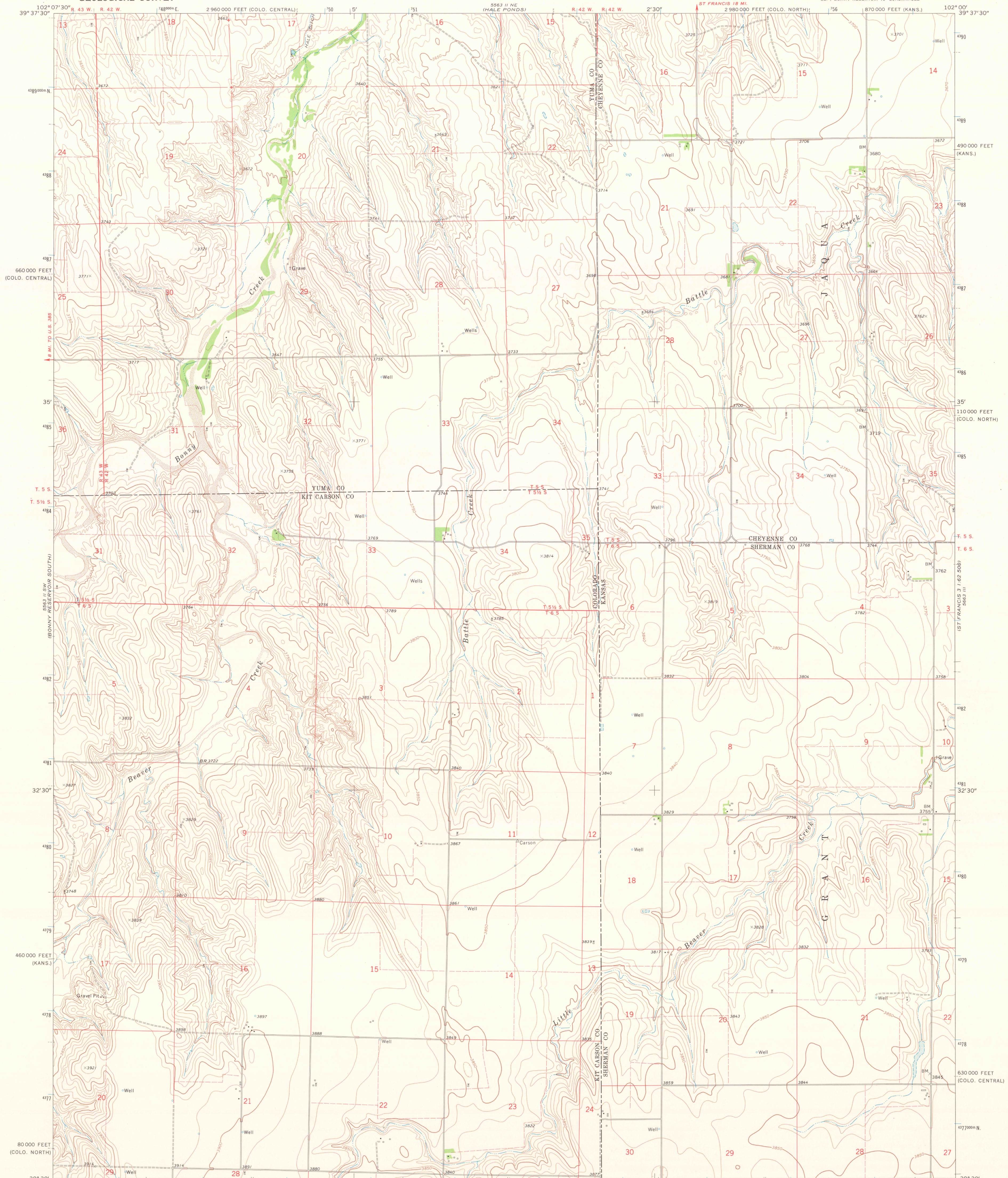
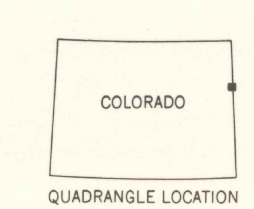
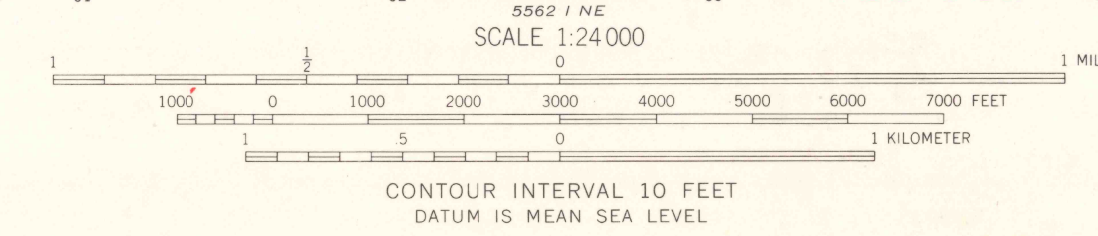
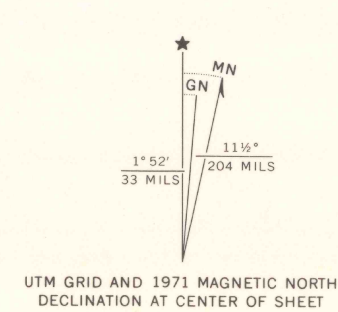


UNITED STATES
DEPARTMENT OF THE INTERIOR
GEOLOGICAL SURVEY

BONNY RESERVOIR SE QUADRANGLE
COLORADO-KANSAS
7.5 MINUTE SERIES (TOPOGRAPHIC)
SE 1/4 BONNY RESERVOIR 15' QUADRANGLE



Mapped, edited, and published by the Geological Survey as part of the Department of the Interior program for the development of the Missouri River Basin. Control by USGS and USC&GS. Topography by photogrammetric methods from aerial photographs taken 1970. Field checked 1971. Polyconic projection. 1927 North American datum. 10,000-foot grids based on Kansas coordinate system, north zone and Colorado coordinate system, north and central zones. 1000-meter Universal Transverse Mercator grid ticks, zone 13, shown in blue. Fine red dashed lines indicate selected fence lines.



ROAD CLASSIFICATION

Primary highway, hard surface	Light-duty road, hard or improved surface
Secondary highway, hard surface	Unimproved road
Interstate Route	U. S. Route
	State Route

THIS MAP COMPLIES WITH NATIONAL MAP ACCURACY STANDARDS FOR SALE BY U. S. GEOLOGICAL SURVEY, DENVER, COLORADO 80225, OR WASHINGTON, D. C. 20242. A FOLDER DESCRIBING TOPOGRAPHIC MAPS AND SYMBOLS IS AVAILABLE ON REQUEST.

USGS Historical File Topographic Division
BONNY RESERVOIR SE, COLO.-KANS.
SE 1/4 BONNY RESERVOIR 15' QUADRANGLE
N 3930-W10200/7.5
1971

3000
MAR 11 1974
AMS 5563 II SE-SERIES V877