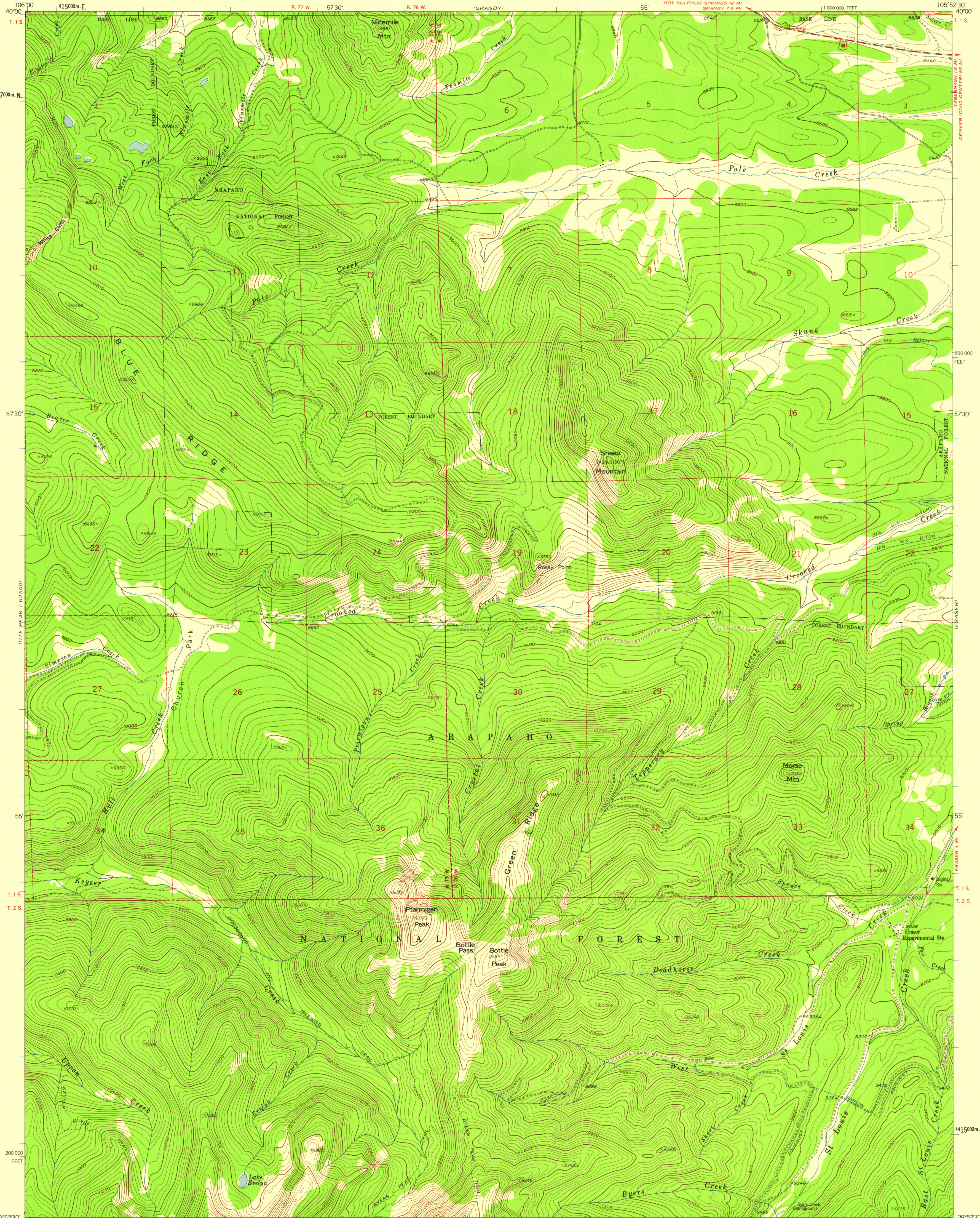
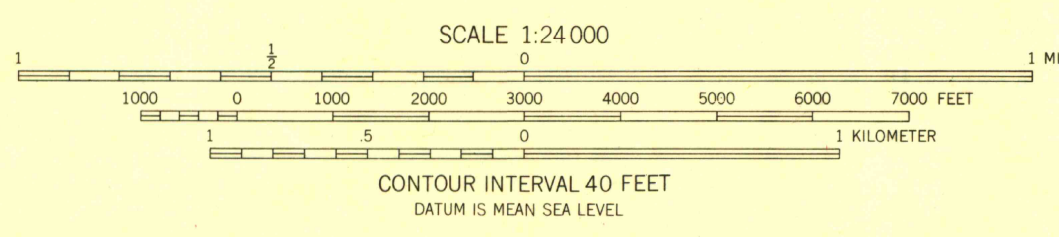
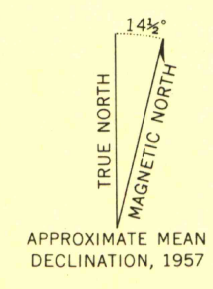


UNITED STATES  
DEPARTMENT OF THE INTERIOR  
GEOLOGICAL SURVEY

BOTTLE PASS QUADRANGLE  
COLORADO-GRAND CO.  
7.5 MINUTE SERIES (TOPOGRAPHIC)  
NW/4 FRASER 15 QUADRANGLE



Mapped, edited, and published by the Geological Survey  
Control by USGS and USC&GS  
Topography from aerial photographs by photogrammetric methods  
Aerial photographs taken 1953. Field check 1957  
Polyconic projection. 1927 North American datum  
10,000-foot grid based on Colorado coordinate system,  
north zone  
1000-meter Universal Transverse Mercator grid ticks,  
zone 13, shown in blue  
Dashed land lines indicate approximate locations  
Unchecked elevations are shown in brown



ROAD CLASSIFICATION

- Heavy-duty ———
- Light-duty - - - - -
- Unimproved dirt - - - - -
- U.S. Route (with shield symbol)

BOTTLE PASS, COLO.  
NW/4 FRASER 15 QUADRANGLE  
N3952.5-W10552.5/7.5

THIS MAP COMPLIES WITH NATIONAL MAP ACCURACY STANDARDS  
FOR SALE BY U.S. GEOLOGICAL SURVEY, DENVER 25, COLORADO OR WASHINGTON 25, D.C.  
A FOLDER DESCRIBING TOPOGRAPHIC MAPS AND SYMBOLS IS AVAILABLE ON REQUEST