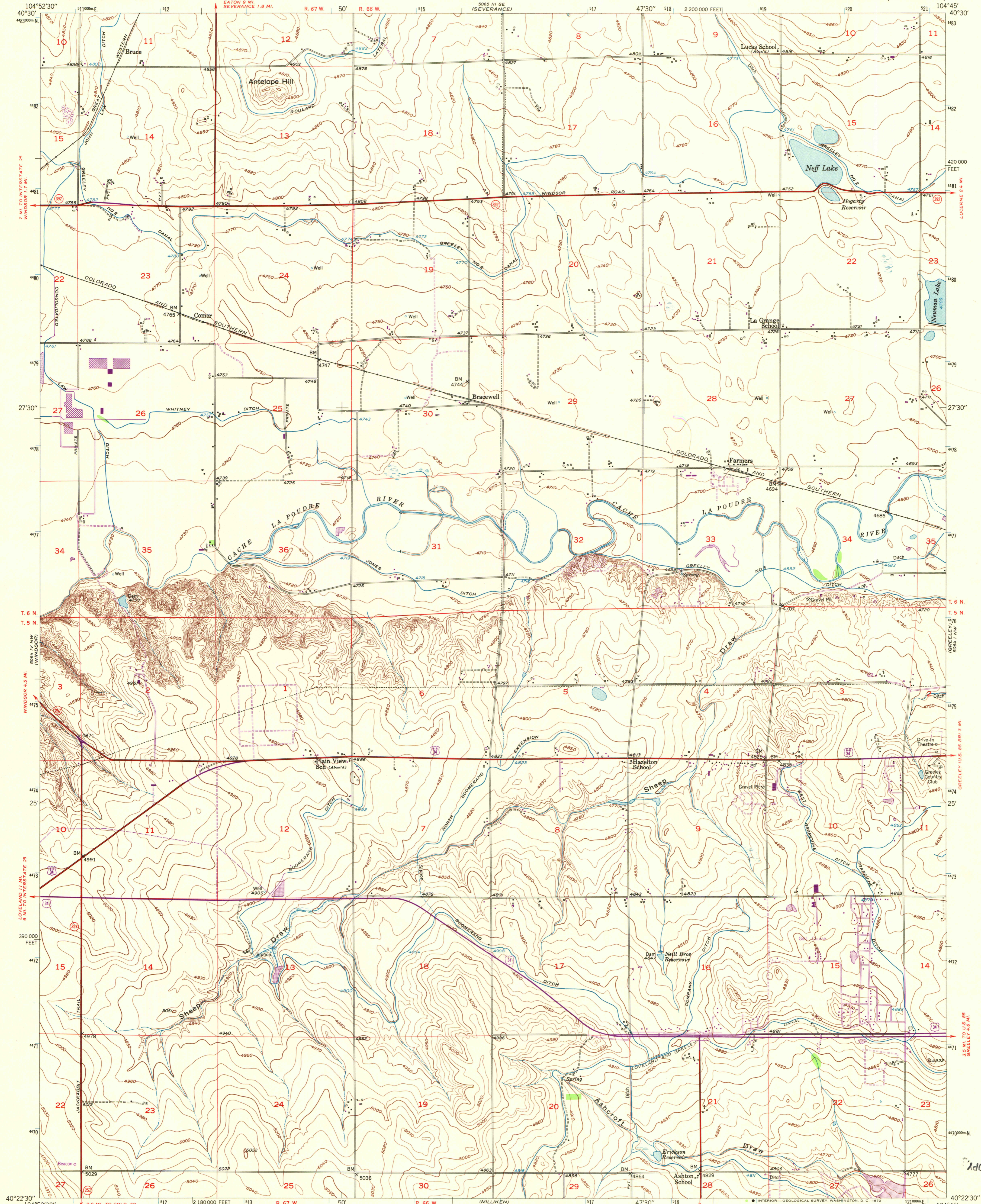
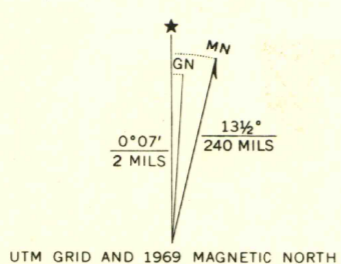


UNITED STATES  
DEPARTMENT OF THE INTERIOR  
GEOLOGICAL SURVEY

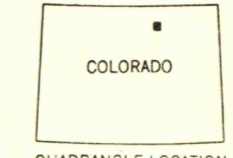
BRACEWELL QUADRANGLE  
COLORADO-WELD CO.  
7.5 MINUTE SERIES (TOPOGRAPHIC)



Mapped, edited, and published by the Geological Survey as part of the Department of the Interior program for the development of the Missouri River Basin Control by USGS and USC&GS  
Culture and drainage in part compiled from aerial photographs by multiplex methods.  
Aerial photographs taken August 1949  
Topography by plane-table methods, 1949-1950  
Polyconic projection. 1927 North American datum  
10,000-foot grid based on Colorado coordinate system, north zone  
1000-meter Universal Transverse Mercator grid ticks, zone 13, shown in blue  
Revisions shown in purple compiled from aerial photographs taken 1969. This information not field checked



SCALE 1:24,000  
CONTOUR INTERVAL 10 FEET  
DATUM IS MEAN SEA LEVEL



ROAD CLASSIFICATION  
Heavy-duty ——— Light-duty ———  
Unimproved dirt - - - - -  
U.S. Route (red circle) State Route (black circle)

THIS MAP COMPLIES WITH NATIONAL MAP ACCURACY STANDARDS  
FOR SALE BY U.S. GEOLOGICAL SURVEY, DENVER, COLORADO 80225, OR WASHINGTON, D.C. 20242  
A FOLDER DESCRIBING TOPOGRAPHIC MAPS AND SYMBOLS IS AVAILABLE ON REQUEST

BRACEWELL, COLO.  
N4022.5-W10445.7.5  
1950  
PHOTO REVISSED 1969  
AMS 5064 IV NE-SERIES V877

OFFICE COPY  
LIBRARY USE ONLY