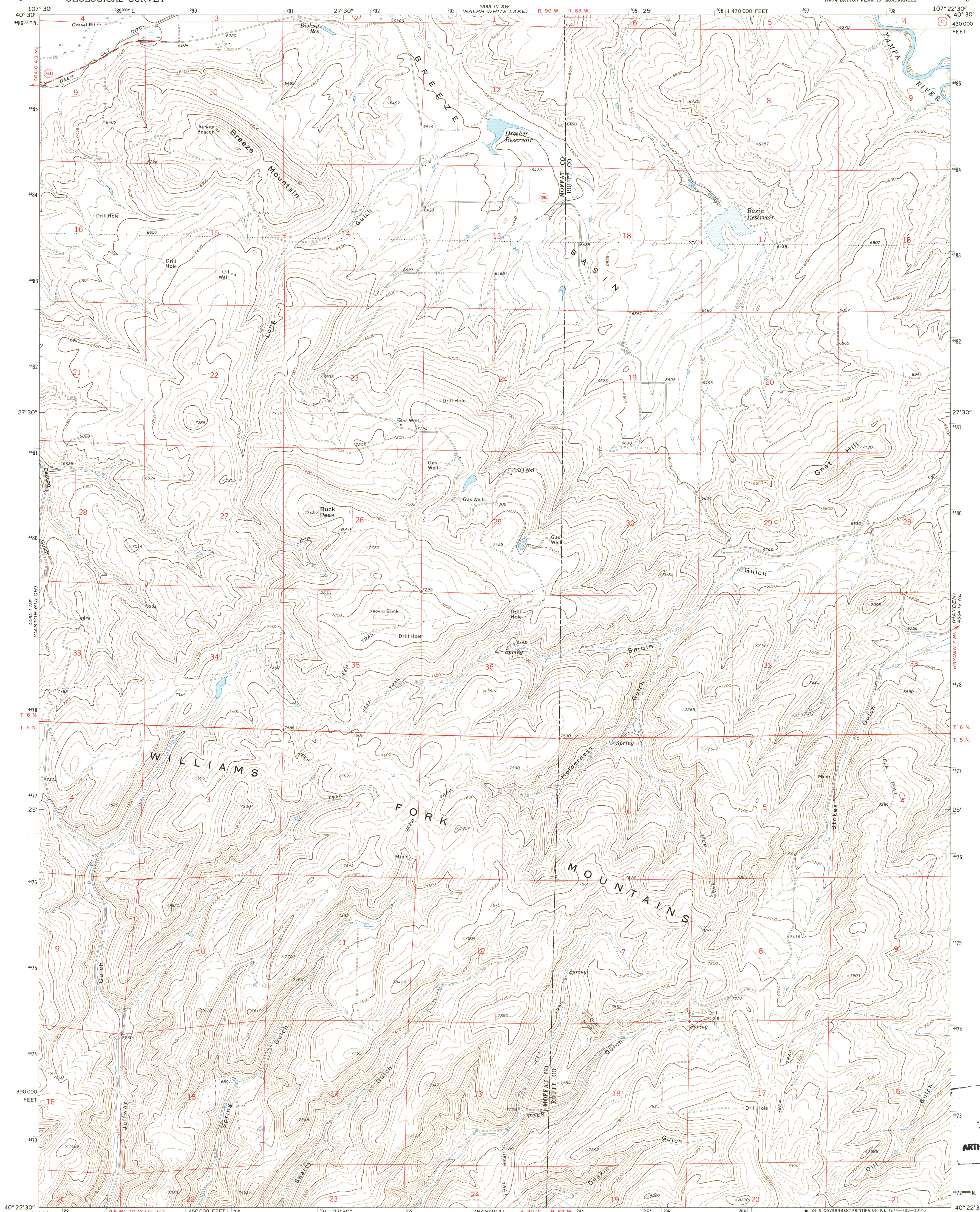
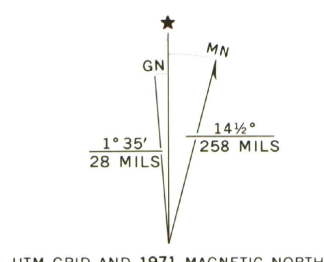


UNITED STATES
DEPARTMENT OF THE INTERIOR
GEOLOGICAL SURVEY

BREEZE MOUNTAIN QUADRANGLE
COLORADO
7.5 MINUTE SERIES (TOPOGRAPHIC)
NW 1/4 DAYTON PEAK 15' QUADRANGLE



Mapped, edited, and published by the Geological Survey
Control by USGS and USC&GS
Topography by photogrammetric methods from aerial
photographs taken 1970. Field checked 1971
Projection and 10,000-foot grid ticks: Colorado
coordinate system, north zone (Lambert conformal conic)
1000-meter Universal Transverse Mercator grid ticks,
zone 13, shown in blue. 1927 North American datum
Fine red dashed lines indicate selected fence lines



CONTOUR INTERVAL 40 FEET
DOTTED LINES REPRESENT 20-FOOT CONTOURS
DATUM IS MEAN SEA LEVEL



ROAD CLASSIFICATION
Primary highway, hard surface
Secondary highway, hard surface
Light-duty road, hard or improved surface
Unimproved road
Interstate Route
U. S. Route
State Route

BREEZE MOUNTAIN, COLO.
NW 1/4 DAYTON PEAK 15' QUADRANGLE
N4022.5-W10722.5/7.5

1971
AMS 4564 IV NW-SERIES Y877



0188001997438

JUN 16 1989
MAP ROOM
ARTHUR LAKES LIBRARY

OFFICE COPY
HAYDEN GULCH
1000 IV SE

G 3701
C222
S24
U5